

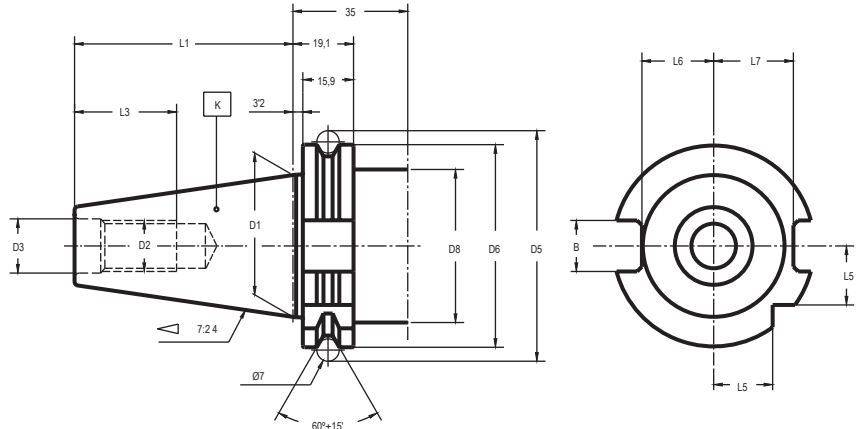


DIN 69871

**FORM A**

Without coolant through.

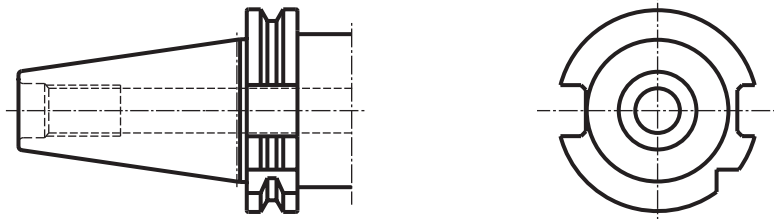
A 型  
无冷却



**FORM AD**

With central coolant channel.

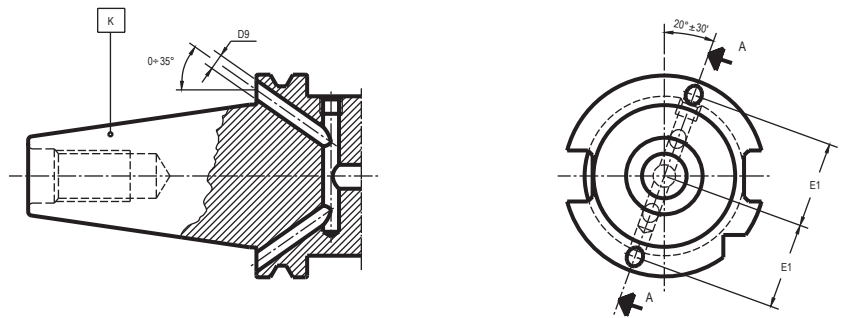
AD 型  
中央冷却液供应



**FORM B**

With flange through coolant channels.

B 型  
侧边冷却液供应

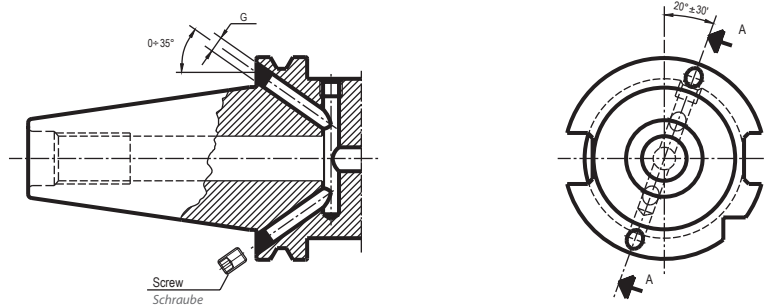


**FORM AD + B**

With central and flange through coolant channels.

Delivery: with two bolts to sealed flange channels.

AD + B 型  
中央与侧边冷却液供应  
配送: 包含两个锁紧侧边供液的螺钉



K	B H12	D1	D2	D3 H7	D5 ± 0,15	D6 <sup>+0</sup> - 0,1	D8max.	D9	L1 <sup>+0</sup> - 0,3	L3min.	L5 <sup>+0</sup> - 0,3	L6 <sup>+0</sup> - 0,4	L7 <sup>+0</sup> - 0,4	E ± 0,1	G
30	16,1	31,75	M-12	13	59,3	50	45	4	47,8	24	15	16,4	19	21	M-4
40	16,1	44,45	M-16	17	72,3	63,55	50	4	68,4	32	18,5	22,8	25	27	M-4
45	19,3	57,15	M-20	21	91,35	82,55	63	5	82,7	40	24	29,1	31,3	35	M-6
50	25,7	69,85	M-24	25	107,25	97,5	80	6	101,75	47	30	35,5	37,7	42	M-6

**\* DIN 69871 DUAL CONTACT ON DEMAND**

DIN 69871 双面夹持刀柄可供洽询

**Material**

Case-hardening alloy steel.  
Case-hardened and tempered.  
Minium strength in core 880 N/mm<sup>2</sup>  
Surface hardness HRC 57 ÷ 60

材质  
表面特殊处理过的合金钢  
经过强化与回火  
轴心最低抗压强度为 880 N/mm<sup>2</sup>  
表面强度为洛氏硬度 HRC 57 ÷ 60

**Taper tolerance**

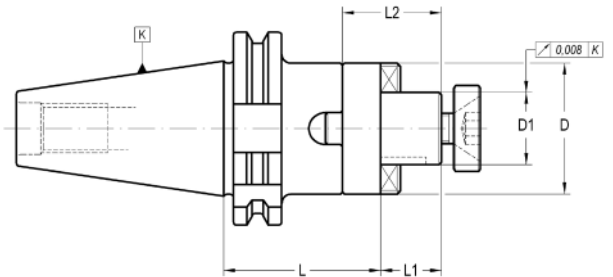
Grade AT3.

锥头标准  
AT3 等级

	UNIVERSAL ARBORS 万能铣刀柄	62		GREAT POWER COLLET CHUCKS - ELS - 强力夹持-双通道内冷	
	SHELL END MILL ARBORS 面铣刀柄	63		HIGH POWER TORQUE CHUCK - HPTC - 强力夹持-加强型	77
	SHELL END MILL ARBORS WITH COOLING 内冷面铣刀柄	64		ROTATORY COOLANT ADAPTERS 外转内冷刀柄	78
	DRILL CHUCK ARBORS 钻夹头转换柄	65		WELDON HOLDERS 侧固式刀柄	81
	REDUCER TO MORSE WITHOUT DRIVING SLOT 莫氏锥度无扁尾转换柄	66		WELDON-WHISTLE-NOTCH HOLDERS 斜2度侧固式刀柄	83
	REDUCER TO MORSE WITH DRIVING SLOT 莫氏锥度有扁尾转换柄	66		SHORT DRILL CHUCKS 钻夹头	84
	EXTENSIONS AND REDUCING ADAPTERS TO MORSE 莫氏锥度转换柄	67		SHRINK FIT CHUCKS 热胀刀柄	85
	ADAPTERS DIN 69871 TO DIN 69063 - HSK SK-HSK转换柄	68		SHRINK FIT CHUCKS WITH COOLANT - ELS - 热胀刀柄-双通道内冷	87
	HOLDERS FOR ADJUSTABLE ADAPTERS DIN 6327 SK-DIN 6327 转换柄	69		SHRINK FIT CHUCKS - SLIM LINE - 热胀刀柄-超薄型	88
	REDUCING ADAPTERS TO ISO. For tools with taper ISO SK-ISO 转换柄	69		ANTIVIBRATION SHRINK FIT CHUCKS - POWER LINE - 热胀刀柄-加强防振型	89
	REDUCING ADAPTERS TO DIN 2080 SK-DIN 2080 转换柄	70		ANTIVIBRATION SHRINK FIT CHUCKS - P.L. ELS - 防震热缩刀柄 -重型含冷却供应-	90
	BASIC ADAPTER FOR MODULAR TOOLING 模块化刀柄	71		TAPPING CHUCKS WITH RELEASING DRIVE SYSTEM 柔性攻丝刀柄	91
	FRONT CONTACT ADAPTERS FOR SCREW IN TOOLS 螺纹连接刀柄	72		TAPPING CHUCKS WITH RELEASING DRIVE SYSTEM 柔性攻丝刀柄	92
	COLLET CHUCKS FOR DIN 6388 COLLETS DIN 6388 型 筒夹刀柄	73		TAPPING CHUCKS WITH RELEASING DRIVE SYSTEM 柔性攻丝刀柄	93
	COLLET CHUCKS ER TYPE (DIN 6499) 高速刀柄	74		QUICK-CHANGE TAPPING CHUCKS 微调快换攻丝刀柄	94
	GREAT POWER COLLET CHUCKS -SLIM LINE- 强力夹持-超薄型	76		QUICK-CHANGE SOLID DRIVE TAPPING CHUCKS 刚性快换攻丝刀柄	95
				TOOLHOLDER BLANKS 毛坯柄	96

For milling cutters with longitudinal or driving slot DIN 138.  
适用于 DIN 138 型长度或驱动槽铣刀

DIN 6358



K	D1 h6	L	L1	L2	D	COD. Form A	Availability 库存状况
30	16	50	17	27	32	001 13 02 01 30	■
30	22	50	19	31	40	001 13 02 01 40	■
30	27	55	21	33	48	001 13 02 01 50	■
40	16	55	17	27	32	001 13 02 02 30	■
40	16	100	17	27	32	001 13 02 02 31	■
40	22	55	19	31	40	001 13 02 02 40	■
40	22	100	19	31	40	001 13 02 02 41	■
40	27	55	21	33	48	001 13 02 02 50	■
40	27	100	21	33	48	001 13 02 02 51	■
40	32	60	24	38	58	001 13 02 02 60	■
40	32	100	24	38	58	001 13 02 02 61	■
40	40	60	27	41	70	001 13 02 02 70	■
40	40	100	27	41	70	001 13 02 02 71	■
50	16	55	17	27	32	001 13 02 04 30	■
50	16	100	17	27	32	001 13 02 04 31	■
50	22	55	19	31	40	001 13 02 04 40	■
50	22	100	19	31	40	001 13 02 04 41	■
50	27	55	21	33	48	001 13 02 04 50	■
50	27	100	21	33	48	001 13 02 04 51	■
50	32	55	24	38	58	001 13 02 04 60	■
50	32	100	24	38	58	001 13 02 04 61	■
50	40	55	27	41	70	001 13 02 04 70	■
50	40	100	27	41	70	001 13 02 04 71	■
50	50	70	30	46	90	001 13 02 04 80	■
50	50	125	30	46	90	001 13 02 04 81	■

ACCESSORIES INCLUDED

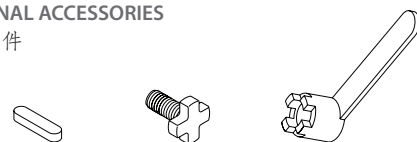
出货包含配件



D <sub>1</sub>	001 99 02 01 30	001 99 01 22 30	001 99 01 12 30
16	001 99 02 01 30	001 99 01 22 30	001 99 01 12 30
22	001 99 02 01 40	001 99 01 22 40	001 99 01 12 40
27	001 99 02 01 50	001 99 01 22 50	001 99 01 12 50
32	001 99 02 01 60	001 99 01 22 60	001 99 01 12 60
40	001 99 02 01 70	001 99 01 22 70	001 99 01 12 70
50	001 99 02 01 80	001 99 01 22 80	001 99 01 12 80

OPTIONAL ACCESSORIES

选购配件



D <sub>1</sub>	001 99 03 02 30	001 99 01 01 30	001 99 04 01 30
16	001 99 03 02 30	001 99 01 01 30	001 99 04 01 30
22	001 99 03 02 40	001 99 01 01 40	001 99 04 01 40
27	001 99 03 02 50	001 99 01 01 50	001 99 04 01 50
32	001 99 03 02 60	001 99 01 01 60	001 99 04 01 60
40	001 99 03 02 70	001 99 01 01 70	001 99 04 01 70
50	001 99 03 02 80	001 99 01 01 80	001 99 04 01 80

# SHELL END MILL ARBORS

面铣刀柄

001 13 03/05 ...



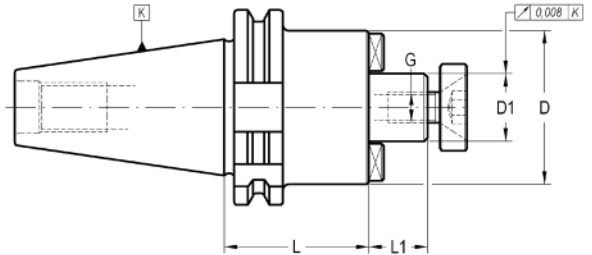
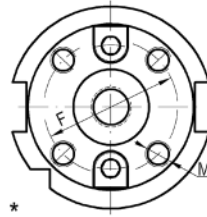
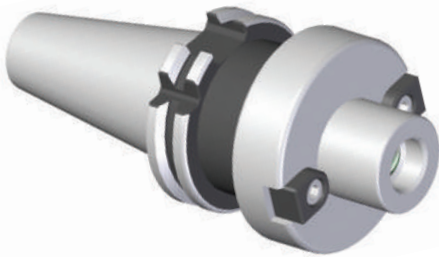
HSK

DIN 69871

For shell end mills with driving slot DIN 138.

适用于 DIN 138 型驱动槽铣刀

## DIN 6357



K	D1 h6	L	L1	D	F	M	G	COD. Form A	Availability 库存状况
40	16	55	17	38-40	-	-	M-8	001 13 05 02 30	■
40	16	120	17	38-40	-	-	M-8	001 13 05 02 31	■
40	22	55	19	48-50	-	-	M-10	001 13 05 02 40	■
40	22	120	19	48-50	-	-	M-10	001 13 05 02 41	■
40	27	55	21	60	-	-	M-12	001 13 05 02 50	■
40	27	120	21	60	-	-	M-12	001 13 05 02 51	■
40	32	60	24	70	-	-	M-16	001 13 05 02 60	■
40	32	120	24	70	-	-	M-16	001 13 05 02 61	■
* 40	40	60	27	89	66,7	M-12	M-20	001 13 03 02 70	■
* 40	40	120	27	89	66,7	M-12	M-20	001 13 03 02 71	■
50	16	55	17	38	-	-	M-8	001 13 05 04 30	■
50	16	120	17	38	-	-	M-8	001 13 05 04 31	■
50	22	55	19	48	-	-	M-10	001 13 05 04 40	■
50	22	120	19	48	-	-	M-10	001 13 05 04 41	■
50	27	55	21	60	-	-	M-12	001 13 05 04 50	■
50	27	120	21	60	-	-	M-12	001 13 05 04 51	■
50	32	55	24	70	-	-	M-16	001 13 05 04 60	■
50	32	120	24	70	-	-	M-16	001 13 05 04 61	■
* 50	40	70	27	89	66,7	M-12	M-20	001 13 03 04 70	■
* 50	40	120	27	89	66,7	M-12	M-20	001 13 03 04 71	■
* 50	60	70	40	129	101,6	M-16	-	001 13 03 04 90	■
* 50	60	120	40	129	101,6	M-16	-	001 13 03 04 91	■

\*With additional 4 tapped holes for front clamping according to DIN 2079.

\* 根据DIN 2079 加置四个刀具夹持孔

### ACCESSORIES INCLUDED

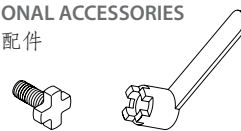
出货包含配件



D <sub>1</sub>					
16	-	303 05 05 00 30	301 01 01 03 12	001 99 01 22 30	001 99 01 12 30
22	-	303 05 05 00 40	301 01 01 04 12	001 99 01 22 40	001 99 01 12 40
27	-	303 05 05 00 50	301 01 01 05 12	001 99 01 22 50	001 99 01 12 50
32	-	303 05 05 00 60	301 01 01 05 16	001 99 01 22 60	001 99 01 12 60
40	003 99 01 01 01	-	301 01 01 06 16	001 99 01 22 70	001 99 01 12 70
60	-	303 05 04 00 02	301 01 01 12 25	-	-

### OPTIONAL ACCESSORIES

选购配件



D <sub>1</sub>		
16	001 99 01 01 30	001 99 04 01 30
22	001 99 01 01 40	001 99 04 01 40
27	001 99 01 01 50	001 99 04 01 50
32	001 99 01 01 60	001 99 04 01 60
40	001 99 01 01 70	001 99 04 01 70
60	-	-

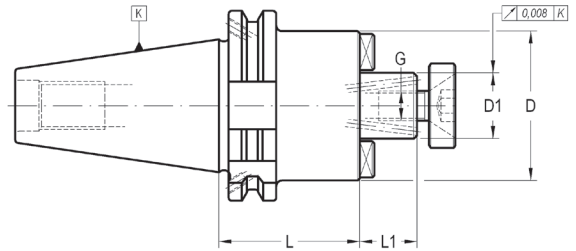
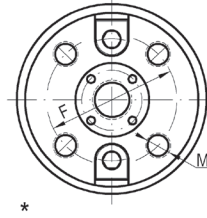
# SHELL END MILL ARBORS WITH INTERNAL COOLING

内冷面铣刀柄

001 33 33/35 ...



For shell end mills with driving slot DIN 138.  
适用于 DIN 138 型驱动槽壳铣刀



K	D1 h6	L	L1	D	F	M	G	COD. Form AD + B	Availability 库存状况
40	16	55	17	38/40	-	-	M-8	001 33 35 02 30	■
40	22	55	19	48/50	-	-	M-10	001 33 35 02 40	■
40	27	55	21	60	-	-	M-12	001 33 35 02 50	■
40	32	60	24	70	-	-	M-16	001 33 35 02 60	■
* 40	40	60	27	89	66,7	M-12	M-20	001 33 33 02 70	■
50	16	55	17	38/40	-	-	M-8	001 33 35 04 30	■
50	16	120	17	39	-	-	M-8	001 33 35 04 31	■
50	22	55	19	48/50	-	-	M-10	001 33 35 04 40	■
50	22	120	19	48	-	-	M-10	001 33 35 04 41	■
50	27	55	21	60	-	-	M-12	001 33 35 04 50	■
50	32	55	24	70	-	-	M-16	001 33 35 04 60	■
* 50	40	55	27	89	66,7	M-12	M-20	001 33 33 04 70	■
* 50	60	70	40	129	101,6	M-16	-	001 33 33 04 90	■

\* With additional 4 tapped holes for front clamping according to DIN 2079.

\* 根据DIN 2079 加置四个刀具夹持孔

## ACCESSORIES INCLUDED

出货包含配件

D <sub>1</sub>	Hex Nut	Washer	Pin	Pin	Washer	Pin
16	-	303 05 05 00 30	301 01 01 03 12	301 01 09 08 20	-	-
22	-	303 05 05 00 40	301 01 01 04 12	301 01 09 10 25	-	-
27	-	303 05 05 00 50	301 01 01 05 12	301 01 01 12 25	-	-
32	-	303 05 05 00 60	301 01 01 05 16	301 01 01 16 30	-	-
40	003 99 01 01 01	-	301 01 01 06 16	-	001 99 01 22 70	001 99 01 12 70
60	-	303 05 04 00 02	301 01 01 12 25	-	-	-

## OPTIONAL ACCESSORIES

选购配件

D <sub>1</sub>	Pin	Pin
16	001 99 01 01 30	001 99 04 01 30
22	001 99 01 01 40	001 99 04 01 40
27	001 99 01 01 50	001 99 04 01 50
32	001 99 01 01 60	001 99 04 01 60
40	001 99 01 01 70	001 99 04 01 70
60	-	-

# DRILL CHUCK ARBORS

钻夹头转换柄

001 13 50 ...

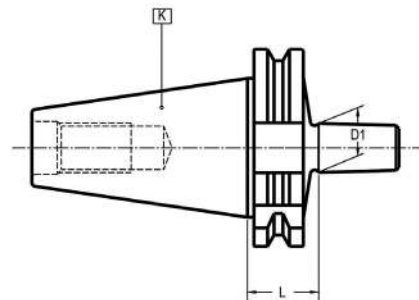


HSK

DIN 69871

For DIN 238 or JACOBS.

适用于 DIN 238 或 JACOBS 系统



K	B-J	L	D1	COD. Form A	Availability 库存状况
40	B-12	25	12,06	001 13 50 02 01	■
40	B-16	25	15,73	001 13 50 02 02	■
40	B-18	25	17,78	001 13 50 02 03	■
50	B-16	25	15,73	001 13 50 04 02	■
50	B-18	25	17,78	001 13 50 04 03	■

Circular deviation between K and D1 ≤ 0,008

K 与 D1 之间的圆度偏差 ≤ 0.008

## REDUCER TO MORSE WITHOUT DRIVING SLOT

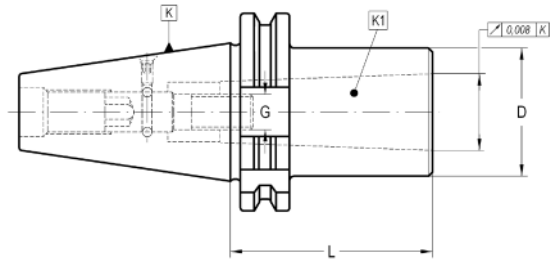
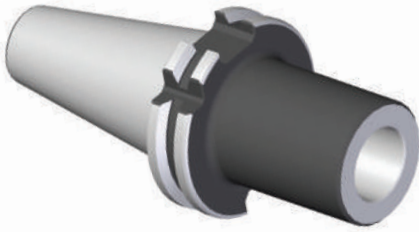
莫氏锥度无扁尾转换柄

003 13 02 ...



With double effect pull stud For Morse taper tools with thread DIN 228-A.  
带可调节式拉钉接头，适用于DIN 228-A 型带螺纹莫氏锥度工具

### DIN 6364 (\*)



K	K1	L	D	G	COD. Form A	Availability 库存状况			
30	1	50	25	M-6	003 13 02 01 20	■	003 99 08 01 21	304 01 00 03 00	301 01 03 04 05
30	3	85	40	M-12	003 13 02 01 40	■	003 99 08 01 40	304 01 00 03 00	301 01 03 04 05
40	2	50	32	M-10	003 13 02 02 30	■	003 99 08 02 30	304 01 00 04 00	301 01 03 05 08
40	3	70	40	M-12	003 13 02 02 40	■	003 99 08 02 40	304 01 00 03 00	301 01 03 05 08
*40	4	95	48	M-16	003 13 02 02 50	■	003 99 08 02 30	301 01 00 04 00	301 01 03 05 08
50	2	60	32	M-10	003 13 02 04 30	■	003 99 08 04 30	304 01 00 04 00	301 01 03 05 12
50	3	65	40	M-12	003 13 02 04 40	■	003 99 08 04 40	304 01 00 04 00	301 01 03 05 12
*50	4	75	40	M-16	003 13 02 04 50	■	003 99 08 04 50	304 01 00 04 00	301 01 03 05 12
*50	5	103	63	M-20	003 13 02 04 60	■	003 99 08 04 60	304 01 00 04 00	301 01 03 05 12

\* These positions are not according to DIN 6364  
(No driving slot DIN 2201).

\* 此产品不符合 DIN 6364 规格 (无 DIN 2201 驱动槽)

## REDUCER TO MORSE WITHOUT DRIVING SLOT

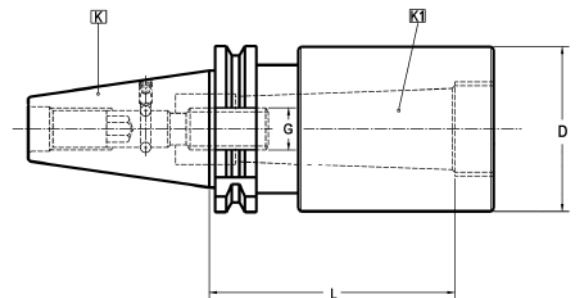
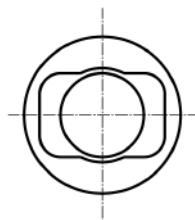
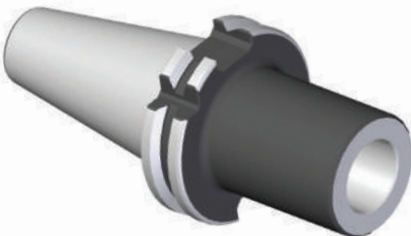
莫氏锥度有扁尾转换柄

003 13 04 ...



With double effect pull stud For Morse taper tools with thread DIN 228-A.  
带可调节式拉钉接头，适用于DIN 228-A 型带螺纹莫氏锥度工具

### DIN 6364 (DIN 2201)



K	K1	L	D	G	COD. Form A	Availability 库存状况			
40	4	95	63	M-16	003 13 04 02 50	■	003 99 08 02 50	304 01 00 04 00	301 01 03 05 08
50	5	103	78	M-20	003 13 04 04 60	□	003 99 08 04 60	304 01 00 04 00	301 01 03 05 12

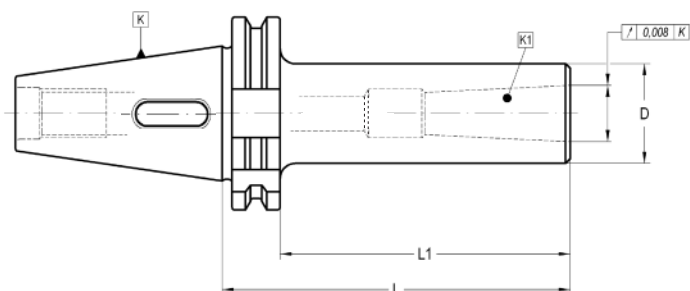
Circular deviation between K and D1 ≤ 0,008



K 与 D1 之间的圆度偏差 ≤ 0.008



For tapered Morse taper tools DIN 228-B or Morse taper tools with thread DIN 228-A.  
适用于 DIN 228-B 型长度 或 DIN 228-A 型带螺纹刀具

## DIN 6383



K	K1	L	L1	D	COD. Form AD	Availability 库存状况		
30	1	50	31	25	003 13 12 01 20	■	301 01 01 06 30	-
30	2	62	43	32	003 13 12 01 30	■	-	003 99 .. 01 30
30	3	80	61	40	003 13 12 01 40	■	-	003 99 .. 01 40
40	1	50	31	25	003 13 12 02 20	■	301 01 01 06 40	-
40	1	100	81	25	003 13 12 02 21	■	301 01 01 06 80	-
40	2	60	41	32	003 13 12 02 30	■	003 99 07 06 15	-
40	2	115	96	32	003 13 12 02 31	■	003 99 07 06 20	-
40	3	75	56	40	003 13 12 02 40	■	-	003 99 .. 02 40
40	3	135	116	40	003 13 12 02 41	■	-	003 99 .. 02 41
40	4	95	76	48	003 13 12 02 50	■	-	003 99 .. 02 50
40	4	160	141	48	003 13 12 02 51	■	-	003 99 .. 02 51
45	1	100	31	25	003 13 12 03 20	□	301 01 01 06 80	-
45	3	135	61	40	003 13 12 03 40	□	-	003 99 .. 03 41
50	1	50	31	25	003 13 12 04 20	■	301 01 01 06 55	-
50	1	105	85	25	003 13 12 04 21	■	301 01 01 06 80	-
50	2	50	31	32	003 13 12 04 30	■	301 01 01 10 50	-
50	2	117	98	32	003 13 12 04 31	■	301 01 01 10 90	-
50	3	63	44	40	003 13 12 04 40	■	301 01 01 12 55	-
50	3	137	118	40	003 13 12 04 41	■	301 01 01 12 10	-
50	4	85	66	48	003 13 12 04 50	■	003 99 07 09 18	-
50	4	167	148	48	003 13 12 04 51	■	003 99 07 09 22	-
50	5	108	89	63	003 13 12 04 60	■	-	003 99 .. 04 60
50	5	197	178	63	003 13 12 04 61	■	-	003 99 .. 04 61

- 301 01 01 .. / 003 99 07 .. Pull stud for tools  
with tightening thread according to DIN 228-A.

— 301 01 01 .. / 003 99 07 .. 使用DIN 228-A 型带螺纹工具时需要拉钉

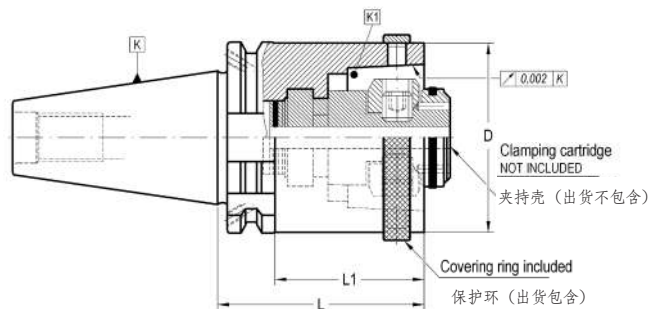
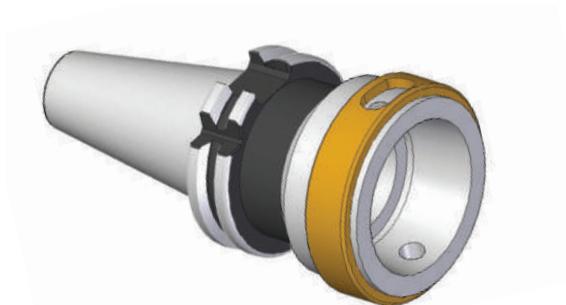
RELATIONATED ELEMENTS Page: 183

相关配件



003 02 11 ...

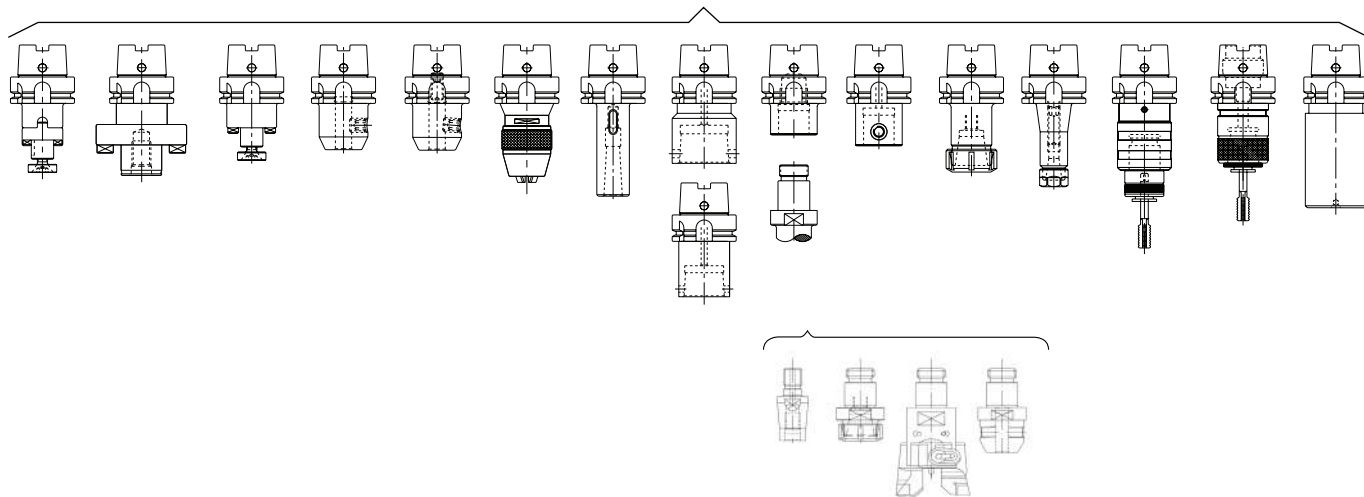
Prepared for MAPAL clamping system.  
适用于MAPAL 夹持系统



K	K1	D	L	L1	COD. Form AD + B	Availability 库存状况
40	HSK-63	63	70	50,9	003 33 14 02 04	■
50	HSK-63	63	40	20,9	003 33 14 04 04	■

- Design for DIN 69893-1 Form A and C toolholders.  
- Clamping cartridge not included.

— 专为 DIN 69893-1 FORM A & C 型刀柄设计  
— 出货不包含夹持壳



ACCESSORIES INCLUDED Page: 58  
出货包含配件



351 03 99 14 ..

OPTIONAL ACCESSORIES Page: 56  
选购配件



003 99 99 50 ..

## HOLDERS FOR ADJUSTABLE ADAPTERS DIN 6327

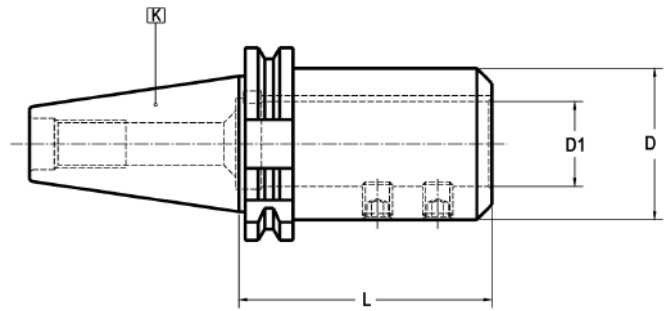
SK-DIN 6327 转换柄

003 13/33 21 ...



HSK

DIN 69871



K	D1 H6	L	D	COD. Form AD	Availability 库存状况	COD. Form AD + B	Availability 库存状况	
40	20	60	45	003 13 21 02 40	<input type="checkbox"/>	-	-	301 01 03 08 12
40	32	150	55	003 13 21 02 70	<input type="checkbox"/>	-	-	301 01 03 08 12
40	36	120	63	-	-	003 33 21 02 80	<input type="checkbox"/>	301 01 03 12 14
50	20	100	45	003 13 21 04 40	<input type="checkbox"/>	-	-	301 01 03 08 12
50	48	100	80	003 13 21 04 90	<input type="checkbox"/>	003 33 21 04 90	<input type="checkbox"/>	301 01 03 12 16

RELATIONATED ELEMENTS Page: 245  
相关配件

Circular deviation between K and D1  $\leq 0,008$   
K 与 D1 之间的圆度偏差  $\leq 0.008$



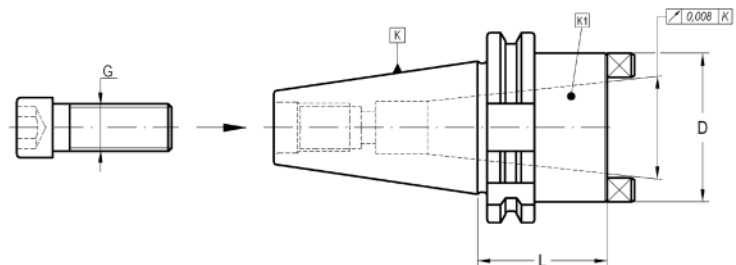
## REDUCING ADAPTERS TO ISO

SK-ISO 转换柄

003 13 31 ...



For tools with DIN 2080, DIN 69871 or MAS-BT taper.  
适用于 DIN 2080, DIN 69871 或 MAS-BT型锥头刀具



K	K1	L	D	G	COD. Form AD	Availability 库存状况	(1)	(2)
50	40	51	70	M-16	003 13 31 04 02	<input type="checkbox"/>	003 99 07 09 14	003 99 07 09 18

- (1) Pull stud necessary to use DIN-2080 shanks.  
- (2) Pull stud necessary to use DIN-69871 and BT shanks.  
- These pull studs are supplied on request.

— (1) 使用 DIN-2080 型工具时需要拉钉  
— (2) 使用 DIN-69871 与 MAS-BT 型工具时需要拉钉  
— 如需拉钉请于订购时注明

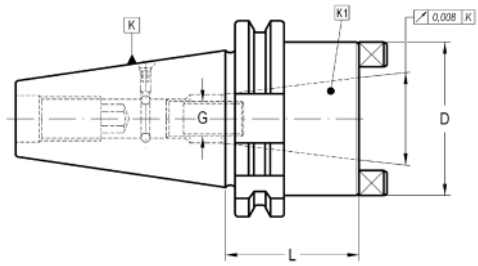
## REDUCING ADAPTERS TO DIN 2080

### SK-DIN 2080 转换柄

003 13 32 ... 01



With double effect pull stud. For tools with DIN 2080 taper.  
带可调节式拉钉接头，适用于DIN 2080 型锥头工具



K	K1	L	D	G	COD. Form AD	Availability 库存状况			
40	30	58	50	M-12	003 13 32 02 01 01	■	003 99 08 02 40	304 01 00 04 00	301 01 03 05 08
40	40	85	68	M-16	003 13 32 02 02 01	■	003 99 08 02 50	304 01 00 04 00	301 01 03 05 08
50	40	63	70	M-16	003 13 32 04 02 01	■	003 99 08 04 50	304 01 00 04 00	301 01 03 05 12

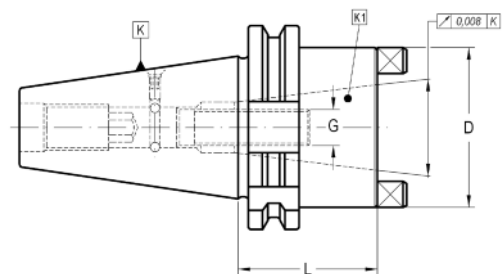
## REDUCING ADAPTERS TO DIN 69871 / MAS 403 BT

### DIN 69871/MAS 403 BT 型刀具用减径套

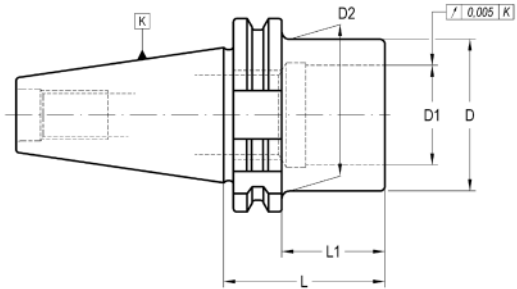
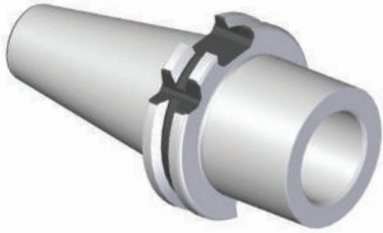
003 13 32 ... 02



With double effect pull stud. For tools with DIN 69871 or MAS-BT taper.  
带可调节式拉钉接头，适用于DIN 69871 或 MAS-BT 型锥头工具

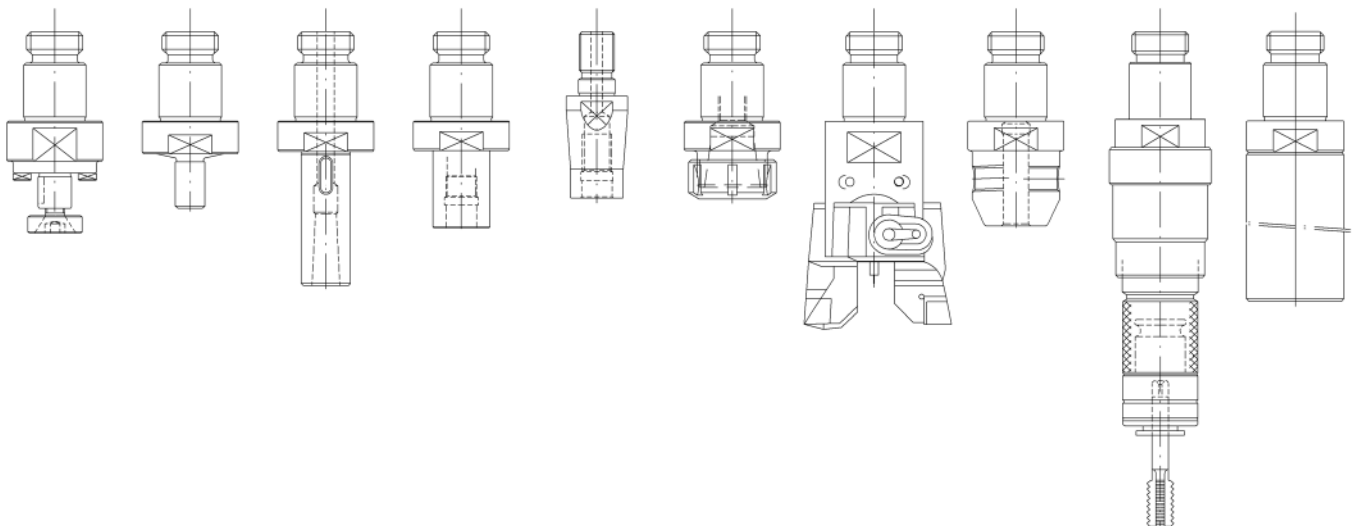


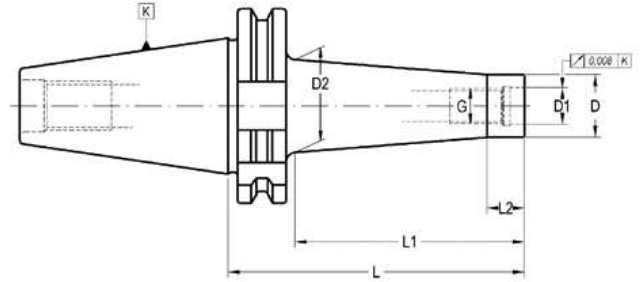
K	K1	L	D	G	COD. Form AD	Availability 库存状况			
40	30	58	50	M-12	003 13 32 02 01 02	■	003 99 08 02 01	304 01 00 04 00	301 01 03 05 08
40	40	85	68	M-16	003 13 32 02 02 02	■	003 99 08 02 02	304 01 00 04 00	301 01 03 05 08
50	40	63	70	M-16	003 13 32 04 02 02	■	003 99 08 04 02	304 01 00 04 00	301 01 03 05 12



K	D1	D	L	L1	D2	COD. Form AD	Availability 库存状况	COD. Form AD + B	Availability 库存状况
30	30	46	63	41	-	003 13 54 01 06	■	-	-
40	10,5	14,5	89	70	18,5	003 13 54 02 11	■	-	-
40	13	18,5	89	70	22,5	003 13 54 02 12	■	-	-
40	16	23	89	70	27	003 13 54 02 13	■	-	-
40	20	29	89	70	33	003 13 54 02 14	■	-	-
40	26	36	89	70	40	003 13 54 02 15	■	-	-
40	30	46	89	70	50	003 13 54 02 16	■	-	-
40	30	46	55	36	-	003 13 54 02 06	■	003 33 54 02 06	■
40	46	63	115	96	-	003 13 54 02 07	■	003 33 54 02 07	■
45	30	46	63	44	-	003 13 54 03 06	■	-	-
50	10,5	14,5	119	100	20	003 13 54 04 11	■	-	-
50	16	23	119	100	28,5	003 13 54 04 13	■	-	-
50	20	29	119	100	34,5	003 13 54 04 14	■	-	-
50	26	36	119	100	41,5	003 13 54 04 15	■	-	-
50	30	46	63	44	-	-	-	003 33 54 04 06	■
50	46	63	63	44	-	003 13 54 04 07	■	003 33 54 04 07	■
50	46	90	63	44	-	003 13 54 04 08	■	003 33 54 04 08	■

Page: 207





K	G	D	D1	D2	L	L1	L2	COD. Form AD	Availability 库存状况	COD. Form AD + B	Availability 库存状况
40	M-6	9,8	6,5	12	55	25	10	-	-	003 33 57 12 01	■
40	M-6	9,8	6,5	20	105	75	10	-	-	003 33 57 32 01	■
40	M-8	12,8	8,5	16	55	25	10	-	-	003 33 57 12 02	■
40	M-8	12,8	8,5	24	105	75	10	-	-	003 33 57 32 02	■
40	M-8	12,8	8,5	26	130	100	10	-	-	003 33 57 42 02	■
40	M-10	17,8	10,5	20	55	25	10	-	-	003 33 57 12 03	■
40	M-10	17,8	10,5	28	105	75	10	-	-	003 33 57 32 03	■
40	M-10	17,8	10,5	32	130	100	10	-	-	003 33 57 42 03	■
40	M-12	20,8	12,5	24	55	25	10	-	-	003 33 57 12 04	■
40	M-12	20,8	12,5	32	105	75	10	-	-	003 33 57 32 04	■
40	M-12	20,8	12,5	36	130	100	10	-	-	003 33 57 42 04	■
40	M-16	28,8	17	30	55	25	10	-	-	003 33 57 12 05	■
40	M-16	28,8	17	38	105	75	10	-	-	003 33 57 32 05	■
40	M-16	28,8	17	42	130	100	10	-	-	003 33 57 42 05	■
50	M-8	12,8	8,5	20	75	50	10	003 13 57 24 02	■	003 33 57 24 02	■
50	M-8	12,8	8,5	28	125	100	10	003 13 57 44 02	■	003 33 57 44 02	■
50	M-8	12,8	8,5	36	175	150	10	003 13 57 64 02	■	003 33 57 64 02	■
50	M-10	17,8	10,5	24	75	50	10	003 13 57 24 03	■	003 33 57 24 03	■
50	M-10	17,8	10,5	32	125	100	10	003 13 57 44 03	■	003 33 57 44 03	■
50	M-10	17,8	10,5	40	175	150	10	003 13 57 64 03	■	003 33 57 64 03	■
50	M-12	20,8	12,5	24	75	50	10	003 13 57 24 04	■	003 33 57 24 04	■
50	M-12	20,8	12,5	34	125	100	10	003 13 57 44 04	■	003 33 57 44 04	■
50	M-12	20,8	12,5	44	175	150	10	003 13 57 64 04	■	003 33 57 64 04	■
50	M-16	28,8	17	32	75	50	10	-	-	003 33 57 24 05	■
50	M-16	28,8	17	42	125	100	10	-	-	003 33 57 44 05	■
50	M-16	28,8	17	52	175	150	10	003 13 57 64 05	■	003 33 57 64 05	■

- K40 Balanced according to ISO 1940-1 up to 15.000 r.p.m.  
 - We have latest methods for dynamic balancing up to 50.000 r.p.m.

— 根据ISO 1940-1 动平衡标准, K40 可达转速一万五千  
 — 我们的最新技术可将动平衡调整至高达转速五万

RELATIONATED ELEMENTS Page: 216

相关配件



003 57 57 ...

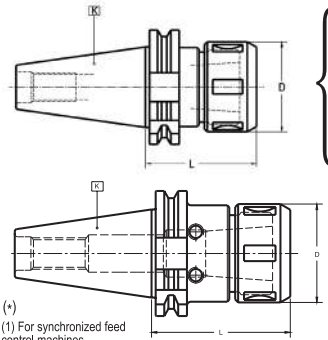
# COLLET CHUCKS FOR DIN 6388 COLLETS

## DIN 6388 型 筒夹刀柄



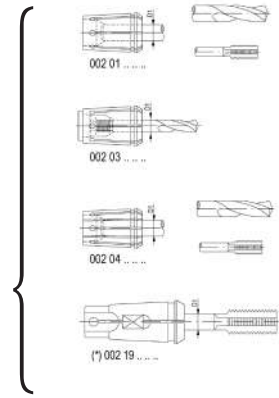
004 13/33 .1 ...

For tools with cylindrical straight shank DIN 1835-A or threaded cylindrical shank DIN 1835-D.  
适用于DIN 1835-A 型滑面直柄刀具或DIN 1835-D 型螺纹柄刀具



(\*) (1) 适用于刚性控制机床

(\*) For synchronized feed control machines.



K	D1 máx.	L	D	G	COD. Form AD	Availability 库存状况	COD. Form AD + B	Availability 库存状况
*30	20	75	60	-	004 13 51 01 04	<input type="checkbox"/>	-	-
30	25	73	50	M12	004 13 01 01 05	<input type="checkbox"/>	-	-
*40	16	70	43	-	004 13 51 02 03	<input type="checkbox"/>	-	-
*40	20	75	50	-	004 13 51 02 04	<input type="checkbox"/>	-	-
40	32	90	72	M16	004 13 01 02 06	<input type="checkbox"/>	004 33 01 02 06	<input type="checkbox"/>
50	20	70	50	M16	004 13 01 04 04	<input type="checkbox"/>	-	-
*50	20	75	50	-	004 13 51 04 04	<input type="checkbox"/>	-	-
50	40	90	85	M16	004 13 01 04 07	<input type="checkbox"/>	-	-

- Circular deviation between outer taper and collet housing  $\leq 0,003$   
- Provided with bearing nut.  
- K 30/40: Balanced according to ISO 1940-1 up to 10.000 r.p.m.

— 外锥头与筒夹外壳之间的圆度偏差  $\leq 0.003$   
— 出货包含轴承螺母  
— K 30/40：根据ISO 1940-1 动平衡标准可达转速一万

### RELATED ELEMENTS Page: 255

相关配件



### ACCESSORIES INCLUDED: Bearing nut

出货包含：轴承螺母



D1max	Part Number
16	004 99 01 02 03
20	004 99 01 02 04
25	004 99 01 02 05
32	004 99 01 02 06
40	004 99 01 02 07

### OPTIONAL ACCESSORIES

选购配件



D1max	Part Number
16	004 99 04 09 08
20	004 99 04 09 09
25	004 99 04 09 11
32	004 99 04 09 12
40	004 99 04 09 13



301 99 02 ...

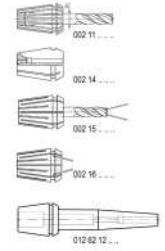
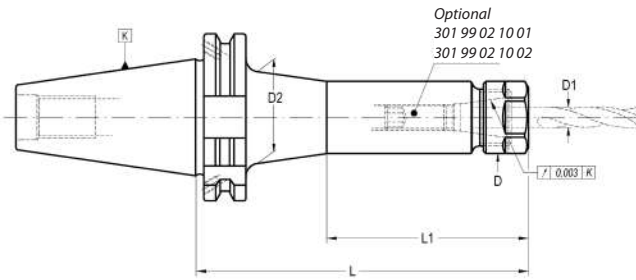
# COLLET CHUCKS ER TYPE (DIN 6499)

高速刀柄



004 13/33 06 ...

For tools with cylindrical straight shank DIN 1835-A.  
适用于 DIN 1835-A 型滑面直柄刀具



K	ER	D1	L	D	G	D2	L1	COD. Form AD	Availability 库存状况	COD. Form AD + B	Availability 库存状况
30	16	0,5 - 10	60	28	M-10	-	-	004 13 06 01 03	■	-	-
30	16	0,5 - 10	100	28	M-10	-	-	004 13 06 01 13	■	-	-
30	25	1- 16	70	42	M-12	-	-	004 13 06 01 05	■	-	-
30	32	2- 20	70	50	M-12	-	-	004 13 06 01 06	■	-	-
40	16	0,5 - 10	70	28	M-10	-	-	004 13 06 02 03	■	004 33 06 02 03	■
40	16	0,5 - 10	100	28	M-10	-	-	004 13 06 02 13	■	004 33 06 02 13	■
40	16	0,5 - 10	160	28	M-10	40	85	004 13 06 02 33	■	004 33 06 02 33	■
40	25	1- 16	70	42	M-16	-	-	004 13 06 02 05	■	004 33 06 02 05	■
40	25	1- 16	100	42	M-16	-	-	004 13 06 02 15	■	-	-
40	32	2- 20	70	50	M-16	-	-	004 13 06 02 06	■	004 33 06 02 06	■
40	32	2- 20	100	50	M-16	-	-	004 13 06 02 16	■	-	-
40	32	2- 20	150	50	M-16	-	-	004 13 06 02 26	■	-	-
40	40	3- 26	70	63	M-16	-	-	004 13 06 02 07	■	004 33 06 02 07	■
40	40	3- 26	100	63	M-16	-	-	004 13 06 02 17	■	-	-
40	50	6- 34	90	78	M-16	-	-	004 13 06 02 08	□	004 33 06 02 08	■
50	16	0,5 - 10	100	28	-	-	-	004 13 06 04 13	■	004 33 06 04 13	■
50	16	0,5 - 10	200	28	-	40	95	004 13 06 04 43	■	004 33 06 04 43	■
50	32	2- 20	70	50	M-16	-	-	004 13 06 04 76	■	-	-
50	32	2- 20	100	50	M-16	-	-	004 13 06 04 06	■	004 33 06 04 06	■
50	32	2- 20	150	50	M-16	-	-	004 13 06 04 26	■	-	-
50	32	2- 20	200	50	M-16	-	-	004 13 06 04 46	■	004 33 06 04 46	■
50	40	3- 26	100	63	M-16	-	-	004 13 06 04 07	■	004 33 06 04 07	■
50	40	3- 26	150	63	M-16	-	-	004 13 06 04 27	■	-	-
50	40	3- 26	200	63	M-16	-	-	004 13 06 04 47	■	004 33 06 04 47	■
50	50	6- 34	100	78	M-16	74	40	004 13 06 04 08	■	004 33 06 04 08	■
50	50	6- 34	150	78	M-16	74	80	004 13 06 04 28	■	-	-

RELATED ELEMENTS Page: 254  
相关配件



CHUCK BODY BALANCED TO:		刀柄本体平衡等级:	
DIN 69871 30	DIN 69871 40	DIN 69871 50	
G 2,5 25.000 rpm	G 2,5 25.000 rpm	G 2,5 20.000 rpm	

ACCESSORIES INCLUDED  
出货包含配件

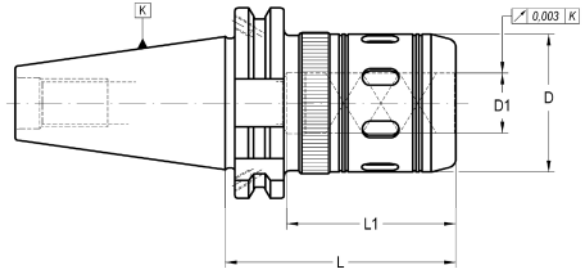
Conventional 标准螺帽	Bearing shell nut 轴承滚珠螺帽	Notch free 无风阻螺帽	Mini 迷你型螺帽
ER 16 004 99 01 08 03	ER 16 004 99 01 04 03	ER 16 004 99 01 10 03	ER mini 8 004 99 01 06 01 11 004 99 01 06 02 16 004 99 01 06 03
ER 25 004 99 01 03 05 32 004 99 01 03 06 40 004 99 01 03 07 50 004 99 01 03 08	ER 25 004 99 01 04 05 32 004 99 01 04 06 40 004 99 01 04 07 50 004 99 01 04 08	ER 25 004 99 01 10 05 32 004 99 01 10 06 40 004 99 01 10 07	

OPTIONAL ACCESSORIES  
选购配件

ER mini 迷你型螺帽 8 004 99 04 05 01 11 004 99 04 05 02 16 004 99 04 05 03	ER 16 004 99 04 06 25	004 99 04 07 30
ER 25 004 99 04 03 05 32 004 99 04 03 06 40 004 99 04 03 07 50 004 99 04 03 08	004 99 04 07 40 004 99 04 07 50 004 99 04 07 63	



For tools with cylindrical straight shank.  
适用于直柄刀具



K	D1	L	D	L1	COD. Form AD + B	Availability 库存状况	
40	20	75	46	60	004 33 15 02 04	■	004 99 04 02 06
40	20	105	46	60	004 33 15 02 14	■	004 99 04 02 06
40	32	100	62	80	004 33 15 02 06	■	004 99 04 02 06
40	32	120	62	80	004 33 15 02 16	■	004 99 04 02 06
50	20	105	46	60	004 33 15 04 04	■	004 99 04 02 06
50	32	85	62	80	004 33 15 04 06	■	004 99 04 02 06
50	32	135	62	80	004 33 15 04 26	■	004 99 04 02 06
50	40	110	85	85	004 33 15 04 07	■	004 99 04 02 06
50	50	120	99	90	004 33 15 04 09	■	004 99 04 02 06

- For an optimum performance of the chuck it is highly recommended to use h6 cylindrical tools.  
- For tools with nominal  $\varnothing$  equal to "D1" the collet is not needed.

— 为使筒夹达到最高效能，我们强烈建议您搭配h6精度的直柄刀具  
— 如刀具直径与 D1 相同则不需要使用筒夹

Page: 317

Use recommendations  
使用相关注意事项

RELATIONATED ELEMENTS Page: 217/261  
相关配件



001 50 02 ... 012 50 09 ... 003 50 12 ... 004 50 06 ... 002 05 ... 002 09 ... 002 05 2 ...



ACCESSORIES INCLUDED  
出货包含配件

Conventional  
标准螺帽

Notch free nut  
无风阻螺帽



D1  
20 351 04 00 14 07  
32 351 04 00 14 07

D1  
20 351 04 00 34 07  
32 351 04 00 34 07

OPTIONAL ACCESSORIES  
选购配件

Wrench for conventional nut  
常规螺母用扳手

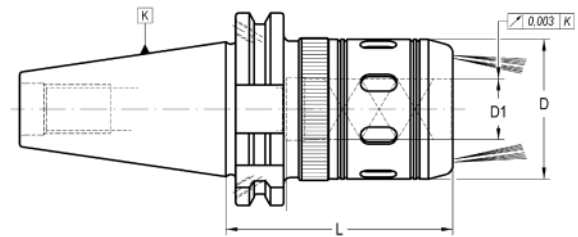
Wrench for not free nut  
滑面螺母用扳手



D1  
20 004 99 04 09 09  
32 004 99 04 09 11

004 99 04 07 46  
004 99 04 07 62

For tools with plain cylindrical straight shank.  
适用于滑面直柄刀具



K	D1	L	D	L1	COD. Form AD + B	Availability 库存状况	
40	20	75	46	60	004 33 25 02 04	<input type="checkbox"/>	004 99 04 02 06
40	32	100	62	80	004 33 25 02 06	<input type="checkbox"/>	004 99 04 02 06
50	32	85	62	80	004 33 25 04 06	<input type="checkbox"/>	004 99 04 02 06

- For an optimum performance of the chuck it is highly recommended to use h6 cylindrical tools.  
- For tools with nominal  $\varnothing$  equal to "D1" the collet is no needed.

— 为使筒夹达到最高效能，我们强烈建议您搭配h6精度的直柄刀具  
— 如刀具直径与 D1 相同则不需要使用筒夹

CHUCK BODY BALANCED TO 刀柄本体平衡等级：	
<b>DIN 69871 40</b>	<b>DIN 69871 50</b>
G 2,5 25.000 rpm	G 2,5 20.000 rpm

Page: 317  
Use recommendations  
使用相关注意事项

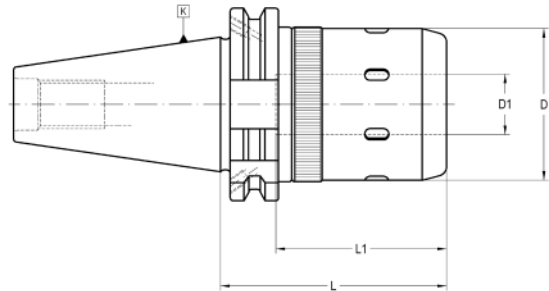
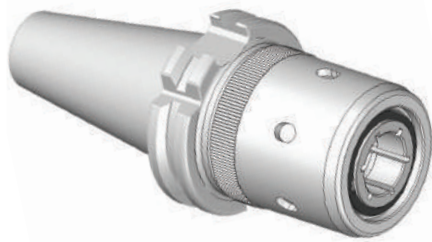
OPTIONAL ACCESSORIES  
选购配件



D1	
20	004 99 04 09 09
32	004 99 04 09 11

For tools with cylindrical straight shank.  
适用于直柄刀具

**NEW!**



K	D1 max.	L	D	L1	COD. Form AD + B	Availability 库存状况	
* 30	16	60	40	50	004 13 55 01 03	■	004 99 04 02 06
* 30	20	100	50	60	004 13 55 01 04	■	004 99 04 02 06
40	16	75	40	50	004 33 55 02 03	■	004 99 04 02 06
40	16	110	40	50	004 33 55 02 13	■	004 99 04 02 06
40	20	75	50	60	004 33 55 02 04	■	004 99 04 02 06
40	20	105	50	60	004 33 55 02 14	■	004 99 04 02 06
40	20	120	50	60	004 33 55 02 24	■	004 99 04 02 06
40	25	100	62	70	004 33 55 02 05	■	004 99 04 02 06
40	25	120	62	70	004 33 55 02 15	■	004 99 04 02 06
50	16	105	40	50	004 33 55 04 03	■	004 99 04 02 06
50	16	135	40	50	004 33 55 04 13	■	004 99 04 02 06
50	20	105	50	60	004 33 55 04 04	■	004 99 04 02 06
50	20	135	50	60	004 33 55 04 14	■	004 99 04 02 06
50	25	135	62	70	004 33 55 04 25	■	004 99 04 02 06
50	40	110	85	90	004 33 55 04 07	■	004 99 04 02 06
50	50	120	99	90	004 33 55 04 09	■	004 99 04 02 06

\* AD Form \* AD 型

CHUCK BODY BALANCED TO: 刀柄本体平衡等级:	
<b>DIN 69871 30</b>	<b>DIN 69871 40</b>
G 2,5 30.000 rpm	G 2,5 25.000 rpm
	<b>DIN 69871 50</b>
	G 2,5 25.000 rpm

Page: 317  
Use recommendations  
使用相关注意事项



RELATIONATED ELEMENTS Page: 239/261  
相关配件



OPTIONAL ACCESSORIES  
选购配件

- For an optimum performance of the chuck it is highly recommended to use h6 cylindrical tools.
- For tools with nominal  $\varnothing$  equal to "D1" the collet is not needed.
- Other sizes please contact.

D1	
16	004 99 04 09 08
20	004 99 04 09 09
25	004 99 04 09 11
32	004 99 04 09 11
40	004 99 04 09 13
50	004 99 04 09 14

- 为使筒夹达到最高效能，我们强烈建议您搭配h6精度的直柄刀具
- 如刀具直径与 D1 相同则不需要使用筒夹
- 如需其他尺寸请洽询

## ROTATORY COOLANT ADAPTERS

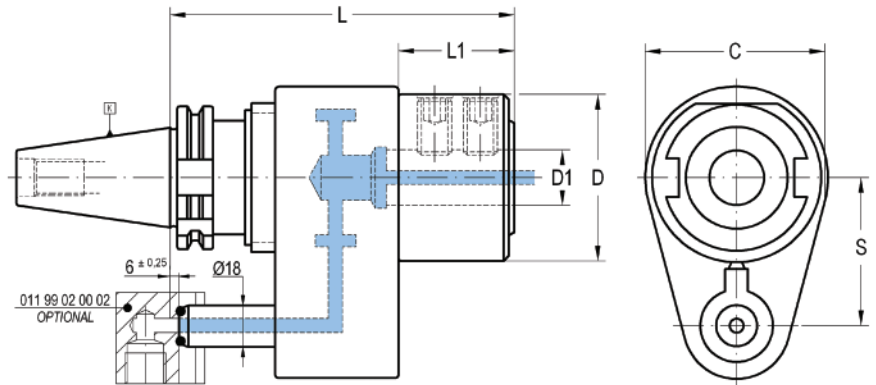
外转内冷刀柄

011 13 03 ...



For tools with cylindrical straight shank with locking surface.

适用于直柄带夹持接头的工具



规格  
最大 RPM  
最大容许冷却剂压力  
最低运转中压力

SPECIFICATIONS	
Max. RPM	6.000 rpm
Max. coolant pressure presion admittida	20 bar
Min. operating pressure presion de funcionamiento	2 bar

K	D1	D	L	L1	S	C	COD. Form A	Availability 库存状况	
40	25	50	153	48	65	80	011 13 03 02 25	■	301 01 08 16 15
40	32	73	153	48	65	80	011 13 03 02 32	■	301 01 08 16 20
50	32	65	165	50	80	100	011 13 03 04 32	■	301 01 08 16 20
50	40	88	165	50	80	100	011 13 03 04 40	■	301 01 08 16 30

### OPTIONAL ACCESSORIES

选购配件



011 99 02 00 02

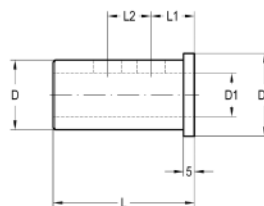


011 99 03 ...

## REDUCING ADAPTERS

减径壳

011 99 03 ...



D	D1	D2	L	L1	L2	COD.	Availability 库存状况
25	16	33	55	20	0	011 99 03 03 01	□
25	20	33	55	20	0	011 99 03 03 02	□
32	16	38	60	20	0	011 99 03 04 01	■
32	20	38	60	20	0	011 99 03 04 02	■
32	25	38	60	20	20	011 99 03 04 03	■
40	16	48	65	20	0	011 99 03 05 01	■
40	20	48	65	20	0	011 99 03 05 02	■
40	25	48	65	20	25	011 99 03 05 03	■
40	32	48	65	20	25	011 99 03 05 04	■

# ROTATORY COOLANT ADAPTERS

外转内冷刀柄

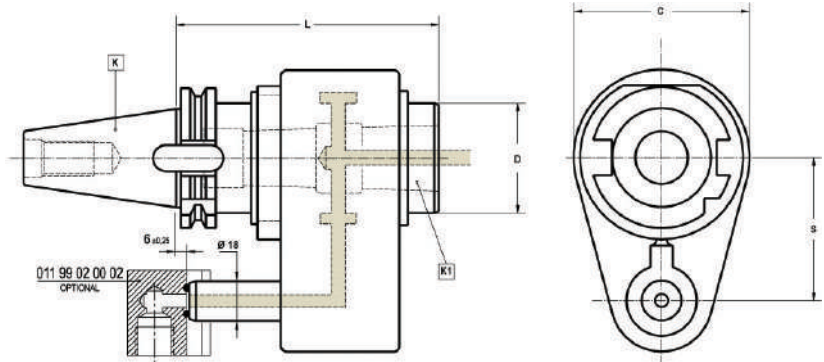
011 13 11 ...



HSK

DIN 69871

For tanged Morse taper tools DIN 228-BK.  
适用于莫氏 DIN 228-BK 型锥头工具



规格  
最大 RPM  
最大容许冷却剂压力  
最低运转中压力

SPECIFICATIONS	
Max. RPM	6.000 rpm
Max. coolant pressure	20 bar
Min. coolant pressure	2 bar

K	K1	D	L	S	C	COD. Form A	Availability 库存状况
40	4	50	120	65	80	011 13 11 02 50	<input type="checkbox"/>
50	4	65	125	80	100	011 13 11 04 50	<input type="checkbox"/>

OPTIONAL ACCESSORIES  
选购配件



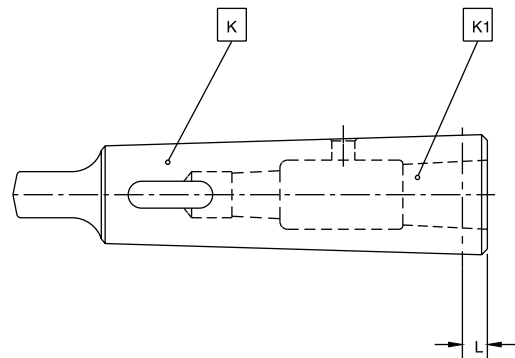
011 99 02 00 02

011 99 05 ...

# REDUCING ADAPTERS

减径壳

011 99 05 ...

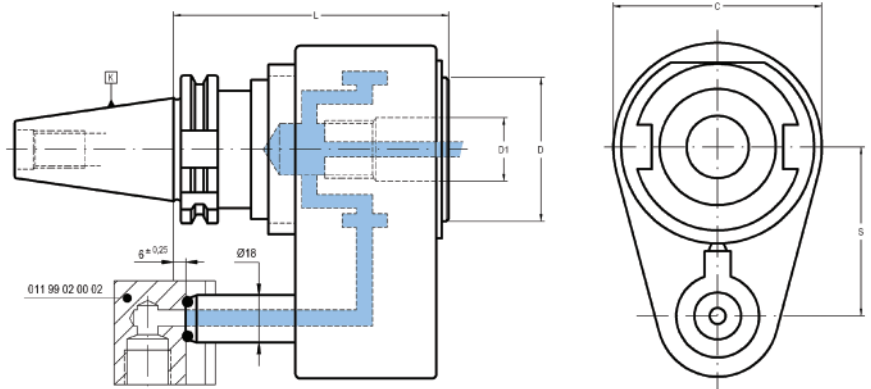


K	K1	L	COD.	Availability 库存状况
4	1	6,5	011 99 05 05 20	<input type="checkbox"/>
4	2	6,5	011 99 05 05 30	<input type="checkbox"/>
4	3	22,5	011 99 05 05 40	<input type="checkbox"/>

# ROTATORY COOLANT ADAPTERS

外转内冷刀柄

011 13 54 ...

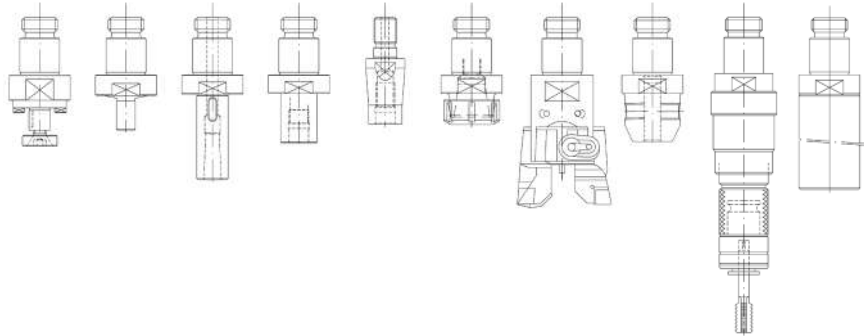


K	D1	D	L	S	C	COD. Form A	Availability 库存状况
40	30	46	110	65	80	011 13 54 02 06	■
50	46	63	120	80	100	011 13 54 04 07	■

## OPTIONAL ACCESSORIES 选购配件



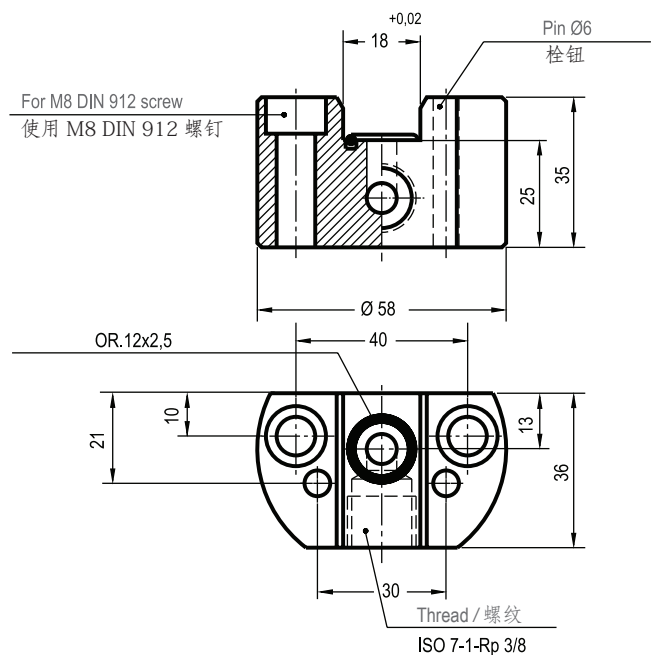
011 99 02 00 02



# REDUCING ADAPTERS

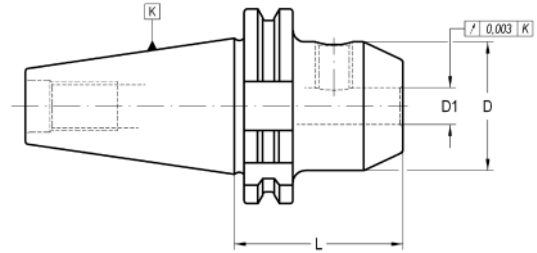
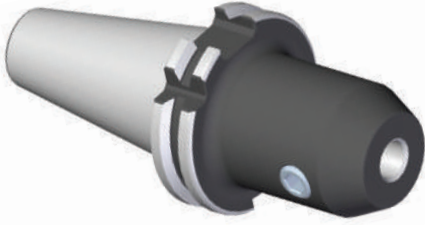
连接器

011 99 02 00 02




For end mills with shank DIN 1835-B - DIN 6355 HB.  
适用于DIN 1835-B DIN 6335 HB 型直柄立铣刀

DIN 6359



K	D1	L	D	COD. Form AD	Availability 库存状况	COD. Form AD + B	Availability 库存状况	
30	6	50	25	012 13 01 11 06	□	-	-	301 01 05 06 10
30	8	50	28	012 13 01 11 08	□	-	-	301 01 05 08 10
30	10	50	35	012 13 01 11 10	□	-	-	301 01 05 10 12
30	12	50	42	012 13 01 11 12	□	-	-	301 01 05 12 16
30	14	50	44	012 13 01 11 14	□	-	-	301 01 05 12 16
30	16	63	48	012 13 01 11 16	□	-	-	301 01 05 14 16
40	6	50	25	012 13 01 12 06	■	-	-	301 01 05 06 10
40	6	120	25	-	-	012 33 01 22 06	■	301 01 05 06 10
40	8	50	28	012 13 01 12 08	■	-	-	301 01 05 08 10
40	8	120	28	-	-	012 33 01 22 08	■	301 01 05 08 10
40	10	50	35	012 13 01 12 10	■	-	-	301 01 05 10 12
40	10	120	35	-	-	012 33 01 22 10	■	301 01 05 10 12
40	12	50	42	012 13 01 12 12	■	012 33 01 12 12	■	301 01 05 12 16
40	12	120	42	-	-	012 33 01 22 12	■	301 01 05 12 16
40	14	50	44	012 13 01 12 14	■	-	-	301 01 05 12 16
40	14	120	44	-	-	012 33 01 22 14	■	301 01 05 12 16
40	16	63	48	012 13 01 12 16	■	-	-	301 01 05 14 16
40	16	120	48	-	-	012 33 01 22 16	■	301 01 05 14 16
40	18	63	50	012 13 01 12 18	■	-	-	301 01 05 14 16
40	18	120	50	-	-	012 33 01 22 18	■	301 01 05 14 16
40	20	63	52	012 13 01 12 20	■	-	-	301 01 05 16 16
40	20	120	52	-	-	012 33 01 22 20	■	301 01 05 16 16
40	25	100	65	012 13 01 12 25	■	-	-	301 01 05 18 20
40	25	160	65	-	-	012 33 01 32 25	■	301 01 05 18 20
40	32	100	72	012 13 01 12 32	■	-	-	301 01 05 20 20
40	32	160	72	-	-	012 33 01 32 32	■	301 01 05 20 20
40	40	120	80	-	-	012 33 01 12 40	■	301 01 05 20 20
40	40	160	80	-	-	012 33 01 32 40	■	301 01 05 20 20
50	6	63	25	012 13 01 14 06	■	-	-	301 01 05 06 10
50	6	120	25	-	-	012 33 01 24 06	■	301 01 05 06 10
50	8	63	28	012 13 01 14 08	■	-	-	301 01 05 08 10
50	8	120	28	-	-	012 33 01 24 08	■	301 01 05 08 10
50	10	63	35	012 13 01 14 10	■	-	-	301 01 05 10 12
50	10	120	35	-	-	012 33 01 24 10	■	301 01 05 10 12
50	12	63	42	012 13 01 14 12	■	-	-	301 01 05 12 16
50	12	120	42	-	-	012 33 01 24 12	■	301 01 05 12 16
50	14	63	44	012 13 01 14 14	■	-	-	301 01 05 12 16

K	D1	L	D	COD. Form AD	Availability 库存状况	COD. Form AD + B	Availability 库存状况	
50	14	120	44	-	-	012 33 01 24 14	■	301 01 05 12 16
50	16	63	48	012 13 01 14 16	■	-	-	301 01 05 14 16
50	16	120	48	-	-	012 33 01 24 16	■	301 01 05 14 16
50	18	63	50	012 13 01 14 18	■	-	-	301 01 05 14 16
50	18	120	50	-	-	012 33 01 24 18	■	301 01 05 14 16
50	20	63	52	012 13 01 14 20	■	-	-	301 01 05 16 16
50	20	120	52	-	-	012 33 01 24 20	■	301 01 05 16 16
50	25	80	65	012 13 01 14 25	■	-	-	301 01 05 18 20
50	25	160	65	-	-	012 33 01 34 25	■	301 01 05 18 20
50	32	100	72	012 13 01 14 32	■	-	-	301 01 05 20 20
50	32	160	72	-	-	012 33 01 34 32	■	301 01 05 20 20
50	40	100	80	012 13 01 14 40	■	-	-	301 01 05 20 20
50	40	100	80	-	-	012 33 01 14 40	■	301 01 05 20 20
50	40	160	80	-	-	012 33 01 34 40	■	301 01 05 20 20
50	50	130	98	-	-	012 33 01 14 50	■	301 01 05 24 25
50	50	200	98	-	-	012 33 01 44 50	■	301 01 05 24 25

- D1 ≥ 25 mm: two clamping holes.

— D1 ≥ 25mm: 有两个刀具夹持孔

- Balanced according to ISO 1940-1 up to 10.000 r.p.m.

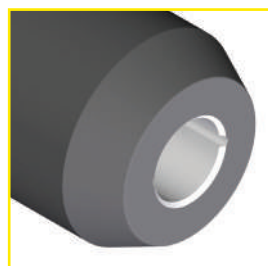
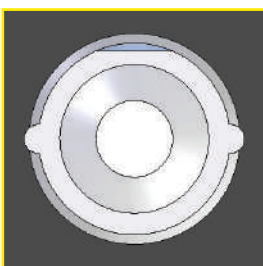
— 根据ISO 1940-1 动平衡标准可达转速一万

- We have latest methods for dynamic balancing up to 50.000 r.p.m.

— 我们的最新技术可将动平衡调整至高达转速五万

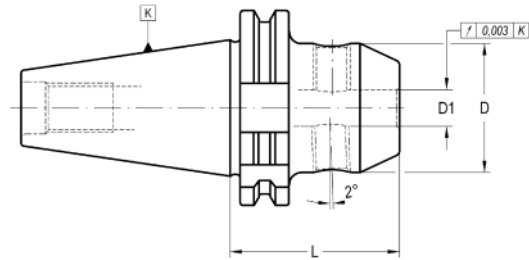
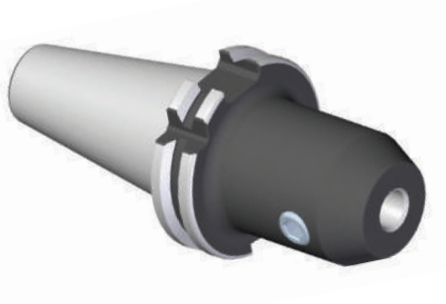
OPTIONAL: On request, supplied with cooling slots.

选购: 如有需要请洽询, 可提供冷却槽





For end mills with shank DIN 1835-B and / or DIN 1835-E.  
适用于DIN 1835-B 与DIN 1835-E 型直柄立铣刀



K	D1	L	D	COD. Form AD	Availability 库存状况	COD. Form AD + B	Availability 库存状况		
30	14	50	44	012 13 04 11 14	■	-	-	301 02 70 12 01	301 01 05 12 16
30	16	63	48	012 13 04 11 16	■	-	-	301 02 70 12 01	301 01 05 14 16
40	6	50	25	-	-	012 33 04 12 06	■	301 02 70 05 01	301 01 05 06 10
40	8	50	28	-	-	012 33 04 12 08	■	301 02 70 06 01	301 01 05 08 10
40	10	50	35	-	-	012 33 04 12 10	■	301 02 70 08 01	301 01 05 10 12
40	12	50	42	-	-	012 33 04 12 12	■	301 02 70 10 01	301 01 05 12 16
40	14	50	44	-	-	012 33 04 12 14	■	301 02 70 10 01	301 01 05 12 16
40	16	63	48	-	-	012 33 04 12 16	■	301 02 70 12 01	301 01 05 14 16
40	18	63	50	012 13 04 12 18	□	012 33 04 12 18	■	301 02 70 12 01	301 01 05 14 16
40	20	63	52	-	-	012 33 04 12 20	■	301 02 70 16 01	301 01 05 16 16
40	25	100	65	-	-	012 33 04 12 25	■	301 02 70 20 01	301 01 05 18 20
40	32	100	72	-	-	012 33 04 12 32	■	301 02 70 20 01	301 01 05 20 20
50	6	63	25	012 13 04 14 06	□	012 33 04 14 06	■	301 02 70 05 01	301 01 05 06 10
50	8	63	28	-	-	012 33 04 14 08	■	301 02 70 06 01	301 01 05 08 10
50	10	63	35	012 13 04 14 10	□	012 33 04 14 10	■	301 02 70 08 01	301 01 05 10 12
50	12	63	42	-	-	012 33 04 14 12	■	301 02 70 10 01	301 01 05 12 16
50	14	63	44	-	-	012 33 04 14 14	■	301 02 70 10 01	301 01 05 12 16
50	16	63	48	-	-	012 33 04 14 16	■	301 02 70 12 01	301 01 05 14 16
50	18	63	50	012 13 04 14 18	□	012 33 04 14 18	■	301 02 70 12 01	301 01 05 14 16
50	20	63	52	-	-	012 33 04 14 20	■	301 02 70 16 01	301 01 05 16 16
50	25	80	65	-	-	012 33 04 14 25	■	301 02 70 20 01	301 01 05 18 20
50	32	100	72	-	-	012 33 04 14 32	■	301 02 70 20 01	301 01 05 20 20

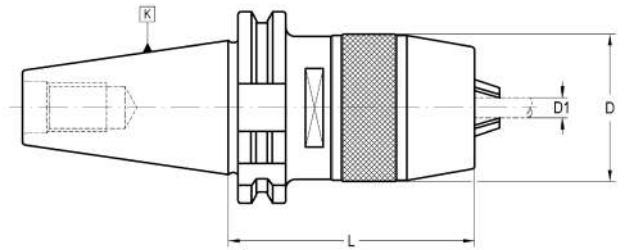
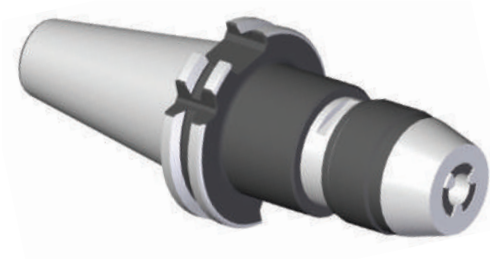
- D1 ≥ 25 mm: two clamping holes.

- D1 ≥ 25 mm: 有两个刀具夹持孔

## SHORT DRILL CHUCKS

钻夹头

012 13 09 ...



K	D1	L	D	COD. Form A	Availability 库存状况			
30	0-8	86	38	012 13 09 11 08	■	351 02 60 00 08	351 02 61 00 08	020 99 03 00 08
40	1-13	81	48	012 13 09 12 13	■	351 02 60 01 13	351 02 61 01 13	020 99 03 01 13
40	3-16	120	54	012 13 09 12 16	■	351 02 60 03 16	351 02 61 03 16	020 99 03 03 16
50	3-16	76	54	012 13 09 14 16	■	351 02 60 03 16	351 02 61 03 16	020 99 03 03 16

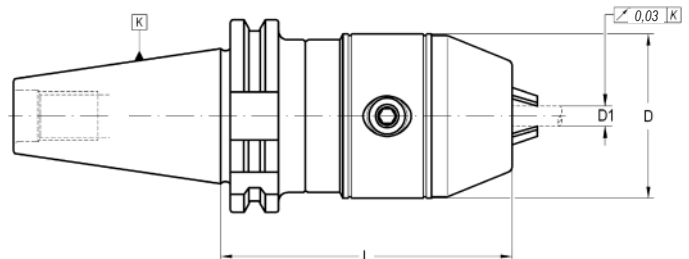
- Balanced according to ISO 1940-1 up to 8.000 r.p.m.

— 根据ISO 1940-1 动平衡标准可达转速八千

## SHORT DRILL CHUCKS - HIGH PRECISION -

高精度钻夹头

012 13/33 19 ...



K	D1	D	L	COD. Form A	Availability 库存状况	COD. Form AD + B	Availability 库存状况
40	1-13	54	91	012 13 19 12 13	■	-	-
40	1-13	54	91	-	-	012 33 19 12 13	■
40	3-16	57	94	012 13 19 12 16	■	-	-
40	3-16	57	94	-	-	012 33 19 12 16	■
50	1-13	54	93	012 13 19 14 13	■	-	-
50	1-13	54	93	-	-	012 33 19 14 13	■
50	3-16	57	96	012 13 19 14 16	■	-	-
50	3-16	57	96	-	-	012 33 19 14 16	■

ACCESSORIES INCLUDED  
出货包含配件

- Balanced according to ISO 1940-1 up to 8.000 r.p.m.

— 根据ISO 1940-1 动平衡标准可达转速八千



351 02 60 ...

# SHRINK FIT CHUCKS -STANDARD-

热胀刀柄

012 13/33 12 ...

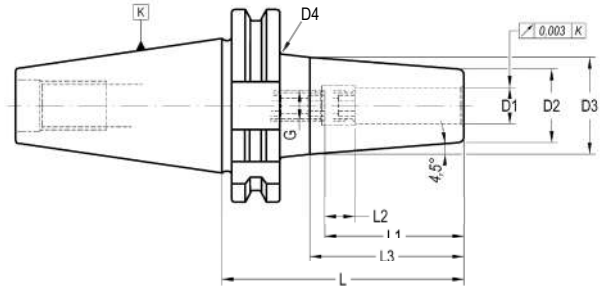



Similar to DIN 69882-8


与DIN 69882-B 型相似

HSK

DIN 69871



K	D1	L	D2	D3	D4	L1	L2	L3	G	COD. Form AD	Availability 库存状况	COD. Form AD + B	Availability 库存状况	
40	3	80	12	18	-	-	-	-	-	-	-	012 33 12 12 03	■	-
40	3	120	12	18	-	20	-	-	-	012 13 12 22 03	■	012 33 12 22 03	■	-
40	4	80	14	20	-	-	-	-	-	-	-	012 33 12 12 04	■	-
40	4	120	14	20	-	20	-	-	-	012 13 12 22 04	■	012 33 12 22 04	■	-
40	5	80	16	22	-	-	-	-	-	-	-	012 33 12 12 05	■	-
40	5	120	16	22	-	25	-	-	-	012 13 12 22 05	■	012 33 12 22 05	■	-
40	6	80	21	27	-	36	10	-	M-5	012 13 12 12 06	■	012 33 12 12 06	■	301 02 33 05 02
40	6	120	21	27	-	36	10	-	M-5	012 13 12 22 06	■	012 33 12 22 06	■	301 02 33 05 02
40	8	80	21	27	-	36	10	-	M-6	012 13 12 12 08	■	012 33 12 12 08	■	301 02 33 06 02
40	8	120	21	27	-	36	10	-	M-6	012 13 12 22 08	■	012 33 12 22 08	■	301 02 33 06 02
40	10	80	24	32	-	41	10	-	M-8	012 13 12 12 10	■	012 33 12 12 10	■	301 02 33 08 02
40	10	120	24	32	-	41	10	-	M-8	012 13 12 22 10	■	012 33 12 22 10	■	301 02 33 08 02
40	12	80	24	32	-	46	10	-	M-10	012 13 12 12 12	■	012 33 12 12 12	■	301 02 33 10 02
40	12	120	24	32	-	46	10	-	M-10	012 13 12 22 12	■	012 33 12 22 12	■	301 02 33 10 02
40	14	80	27	34	-	46	10	-	M-10	012 13 12 12 14	■	012 33 12 12 14	■	301 02 33 10 02
40	14	120	27	34	-	46	10	-	M-10	012 13 12 22 14	■	012 33 12 22 14	■	301 02 33 10 02
40	16	80	27	34	-	49	10	-	M-12	012 13 12 12 16	■	012 33 12 12 16	■	301 02 33 12 02
40	16	120	27	34	-	49	10	-	M-12	012 13 12 22 16	■	012 33 12 22 16	■	301 02 33 12 02
40	18	80	33	42	-	49	10	-	M-12	012 13 12 12 18	■	012 33 12 12 18	■	301 02 33 12 02
40	18	120	33	42	-	49	10	-	M-12	-	-	012 33 12 22 18	■	301 02 33 12 02
40	20	80	33	42	-	51	10	-	M-16	-	-	012 33 12 12 20	■	301 02 33 16 02
40	20	120	33	42	-	51	10	-	M-16	-	-	012 33 12 22 20	■	301 02 33 16 02
40	25	100	44	53	-	57	10	-	M-16	-	-	012 33 12 12 25	■	301 02 33 16 02
40	32	100	44	53	-	61	10	-	M-16	012 13 12 12 32	■	012 33 12 12 32	■	301 02 33 16 02
50	6	80	21	27	-	36	10	-	M-5	012 13 12 14 06	■	012 33 12 14 06	■	301 02 33 05 02
50	6	130	21	27	-	36	10	-	M-5	-	-	012 33 12 24 06	■	301 02 33 05 02
50	6	160	21	27	-	36	10	-	M-5	-	-	012 33 12 34 06	■	301 02 33 05 02
50	6	200	21	27	36	36	10	140	M-5	-	-	012 33 12 44 06	■	301 02 33 05 02
50	8	80	21	27	-	36	10	-	M-6	012 13 12 14 08	■	012 33 12 14 08	■	301 02 33 06 02
50	8	130	21	27	-	36	10	-	M-6	-	-	012 33 12 24 08	■	301 02 33 06 02
50	8	160	21	27	-	36	10	-	M-6	-	-	012 33 12 34 08	■	301 02 33 06 02
50	8	200	21	27	36	36	10	140	M-6	-	-	012 33 12 44 08	■	301 02 33 06 02
50	10	80	24	32	-	41	10	-	M-8	012 13 12 14 10	■	012 33 12 14 10	■	301 02 33 08 02
50	10	130	24	32	-	41	10	-	M-8	-	-	012 33 12 24 10	■	301 02 33 08 02
50	10	160	24	32	-	41	10	-	M-8	-	-	012 33 12 34 10	■	301 02 33 08 02
50	10	200	24	32	41	41	10	140	M-8	-	-	012 33 12 44 10	■	301 02 33 08 02
50	12	80	24	32	-	46	10	-	M-10	012 13 12 14 12	■	012 33 12 14 12	■	301 02 33 10 02
50	12	130	24	32	-	46	10	-	M-10	-	-	012 33 12 24 12	■	301 02 33 10 02

K	D1	L	D2	D3	D4	L1	L2	L3	G	COD. Form AD	Availability 库存状况	COD. Form AD + B	Availability 库存状况	
50	12	160	24	32	-	46	10	-	M-10	-	-	012 33 12 34 12	■	301 02 33 10 02
50	12	200	24	32	41	46	10	140	M-10	-	-	012 33 12 44 12	■	301 02 33 10 02
50	14	80	27	34	-	46	10	-	M-10	-	-	012 33 12 14 14	■	301 02 33 10 02
50	14	130	27	34	-	46	10	-	M-10	-	-	012 33 12 24 14	■	301 02 33 10 02
50	14	160	27	34	-	46	10	-	M-10	-	-	012 33 12 34 14	■	301 02 33 10 02
50	14	200	27	34	43	46	10	140	M-10	-	-	012 33 12 44 14	■	301 02 33 10 02
50	16	80	27	34	-	49	10	-	M-12	-	-	012 33 12 14 16	■	301 02 33 12 02
50	16	130	27	34	-	49	10	-	M-12	-	-	012 33 12 24 16	■	301 02 33 12 02
50	16	160	27	34	-	49	10	-	M-12	-	-	012 33 12 34 16	■	301 02 33 12 02
50	16	200	27	34	43	49	10	140	M-12	-	-	012 33 12 44 16	■	301 02 33 12 02
50	18	80	33	42	-	49	10	-	M-12	-	-	012 33 12 14 18	■	301 02 33 12 02
50	18	130	33	42	-	49	10	-	M-12	-	-	012 33 12 24 18	■	301 02 33 12 02
50	18	160	33	42	-	49	10	-	M-12	-	-	012 33 12 34 18	■	301 02 33 12 02
50	18	200	33	42	51	49	10	140	M-12	-	-	012 33 12 44 18	■	301 02 33 12 02
50	20	80	33	42	-	51	10	-	M-16	012 13 12 14 20	■	012 33 12 14 20	■	301 02 33 16 02
50	20	130	33	42	-	51	10	-	M-16	-	-	012 33 12 24 20	■	301 02 33 16 02
50	20	160	33	42	-	51	10	-	M-16	-	-	012 33 12 34 20	■	301 02 33 16 02
50	20	200	33	42	51	51	10	140	M-16	-	-	012 33 12 44 20	■	301 02 33 16 02
50	25	100	44	53	-	57	10	-	M-16	012 13 12 14 25	■	012 33 12 14 25	■	301 02 33 16 02
50	25	130	44	53	-	57	10	-	M-16	-	-	012 33 12 24 25	■	301 02 33 16 02
50	25	160	44	53	-	57	10	-	M-16	-	-	012 33 12 34 25	■	301 02 33 16 02
50	25	200	44	53	61	57	10	140	M-16	-	-	012 33 12 44 25	■	301 02 33 16 02
50	32	100	44	53	-	61	10	-	M-16	012 13 12 14 32	■	012 33 12 14 32	■	301 02 33 16 02
50	32	130	44	53	-	61	10	-	M-16	-	-	012 33 12 24 32	■	301 02 33 16 02
50	32	160	44	53	-	61	10	-	M-16	-	-	012 33 12 34 32	■	301 02 33 16 02
50	32	200	44	53	91	61	10	140	M-16	-	-	012 33 12 44 32	■	301 02 33 16 02

## Characteristics:

- Heat resistant hot working steel.
- Tempered: 54-2 HRC.
- Taper manufactured according DIN-69871.
- Balanced according to ISO-1940-1 to G2,5 at 25.000 r.p.m.

## Application:

- Machining where it requires a exceptional high accuracy.
  - For a correct function it recommended:
- Shank tolerance: h6.  
D1 = 3, 4 & 5: Carbide  
D1 ≥ 6 mm: Carbide or HSS

## Delivery:

- With built-in bored through stop screw.

## 特色:

- 使用耐热钢打造
- 回火: 54-2 HRC
- 锥头为DIN-69871
- 根据ISO 1940-1 动平衡标准转速二万五千时为 G 2.5

## 应用:

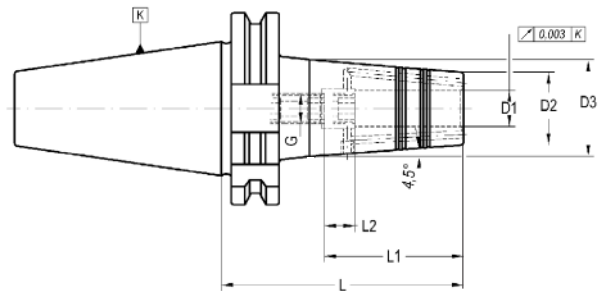
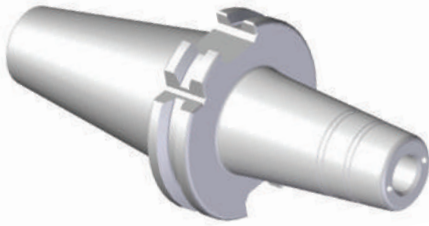
- 装设使用的跳动进度极高
  - 使其正常运作应注意:
- 刀柄等级: h6  
D1 = 3, 4 & 5 mm: 碳化钢  
D1 ≥ 6 mm: 碳化钢 或 高速钢


## 配送:

- 内置冷却液槽锁紧螺丝

Similar to DIN 69882-8

与DIN 69882-B 型相似



K	D1	L	D2	D3	L1	L2	G	COD. Form AD	COD. Form AD + B	Availability 库存状况	
40	6	80	21	27	36	10	M-5	-	012 33 22 12 06	■	301 02 33 05 04
40	8	80	21	27	36	10	M-6	-	012 33 22 12 08	■	301 02 33 06 04
40	10	80	24	32	41	10	M-8	-	012 33 22 12 10	■	301 02 33 08 04
40	12	80	24	32	46	10	M-10	-	012 33 22 12 12	■	301 02 33 10 04
40	14	80	27	34	46	10	M-10	-	012 33 22 12 14	■	301 02 33 10 04
40	16	80	27	34	49	10	M-12	-	012 33 22 12 16	■	301 02 33 12 04
40	18	80	33	42	49	10	M-12	-	012 33 22 12 18	■	301 02 33 12 04
40	20	80	33	42	51	10	M-16	-	012 33 22 12 20	■	301 02 33 16 04
40	25	100	44	50	57	10	M-16	-	012 33 22 12 25	■	301 02 33 16 04
40	32	100	44	50	61	10	M-16	-	012 33 22 12 32	■	301 02 33 16 04
50	6	80	21	27	36	10	M-5	-	012 33 22 14 06	■	301 02 33 05 04
50	6	130	21	27	36	10	M-5	-	012 33 22 24 06	■	301 02 33 05 04
50	8	80	21	27	36	10	M-6	-	012 33 22 14 08	■	301 02 33 06 04
50	8	130	21	27	36	10	M-6	-	012 33 22 24 08	■	301 02 33 06 04
50	10	80	24	32	41	10	M-8	-	012 33 22 14 10	■	301 02 33 08 04
50	10	130	24	32	41	10	M-8	-	012 33 22 24 10	■	301 02 33 08 04
50	12	80	24	32	46	10	M-10	-	012 33 22 14 12	■	301 02 33 10 04
50	12	130	24	32	46	10	M-10	-	012 33 22 24 12	■	301 02 33 10 04
50	14	80	27	34	46	10	M-10	-	012 33 22 14 14	■	301 02 33 10 04
50	14	130	27	34	46	10	M-10	-	012 33 22 24 14	■	301 02 33 10 04
50	16	80	27	34	49	10	M-12	-	012 33 22 14 16	■	301 02 33 12 04
50	16	130	27	34	49	10	M-12	-	012 33 22 24 16	■	301 02 33 12 04
50	18	80	33	42	49	10	M-12	-	012 33 22 14 18	■	301 02 33 12 04
50	18	130	33	42	49	10	M-12	-	012 33 22 24 18	■	301 02 33 12 04
50	20	80	33	42	51	10	M-16	012 13 22 14 20 □	012 33 22 14 20	■	301 02 33 16 04
50	20	130	33	42	51	10	M-16	-	012 33 22 24 20	■	301 02 33 16 04
50	25	100	44	53	57	10	M-16	-	012 33 22 14 25	■	301 02 33 16 04
50	25	130	44	53	57	10	M-16	-	012 33 22 24 25	■	301 02 33 16 04
50	32	100	44	53	61	10	M-16	-	012 33 22 14 32	■	301 02 33 16 04

## Characteristics:

- Heat resistant hot working steel.
- Tempered: 54-2 HRC.
- Taper manufactured according DIN-69871.
- Balanced according to ISO-1940-1 to G2,5 at 25.000 r.p.m.

## Application:

- Machining where it requires a exceptional high accuracy.
- For a correct function it recommended:

Shank tolerance: h6.

D1 = 3, 4 &amp; 5: Carbide

D1 ≥ 6 mm: Carbide or HSS

## Delivery:

- With built-in bored through stop screw.

## 特色:

- 使用耐热钢打造
- 回火: 54-2 HRC
- 锥头为DIN-69871 型
- 根据ISO 1940-1 动平衡标准转速二万五千时为 G 2.5

## 应用:

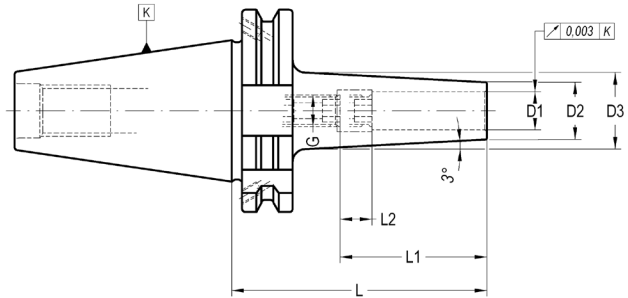
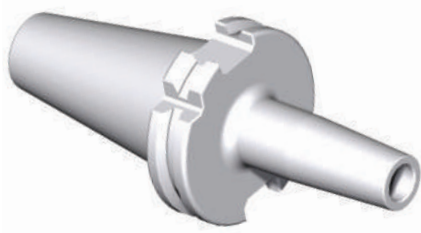
- 装设使用的跳动精度极高
  - 使其正常运作应注意:
- 刀柄等级: h6  
D1 = 3, 4 & 5 mm: 碳化钢  
D1 ≥ 6 mm: 碳化钢 或 高速钢


## 配送:

- 内置冷却液槽锁紧螺丝

Similar to DIN 69882-8

与DIN 69882-B 型相似



K	D1	D2	D3	L1	L2	G	L	COD. Form AD + B	Availability 库存状况	
40	3	8	14	20	5	-	80	012 33 32 12 03	■	-
40	4	9	15	20	5	-	80	012 33 32 12 04	■	-
40	5	10	16	25	5	-	80	012 33 32 12 05	■	-
40	6	12	16	36	10	M-5	80	012 33 32 12 06	■	301 02 33 05 02
40	8	14	18	36	10	M-6	80	012 33 32 12 08	■	301 02 33 06 02
40	10	16	20	41	10	M-8	80	012 33 32 12 10	■	301 02 33 08 02
40	12	18	22	46	10	M-10	80	012 33 32 12 12	■	301 02 33 10 02

Characteristics:

- Heat resistant hot working steel.
- Tempered: 54-2 HRC.
- Taper manufactured according DIN-69871.
- Balanced according to ISO-1940-1 to G2,5 at 25.000 r.p.m.

Application:

- Machining where it requires a exceptional high accuracy.
  - For a correct function it recommended:
- Shank tolerance: h6.  
 D1 = 3, 4 & 5: Carbide  
 D1 ≥ 6 mm: Carbide or HSS

Delivery:

- With built-in bored through stop screw.

特色:

- 使用耐热钢打造
- 回火：54-2 HRC
- 锥头为DIN-69871 型
- 根据ISO 1940-1 动平衡标准转速二万五千时为 G 2.5

应用:

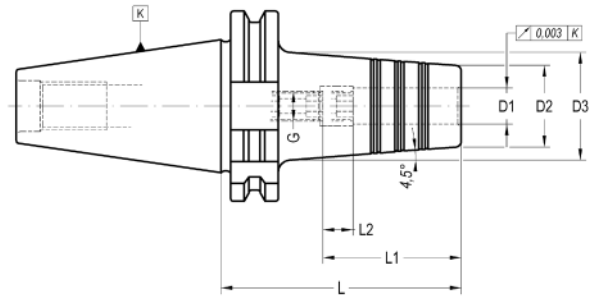
- 装设使用的跳动精度极高
  - 使其正常运作应注意:
- 刀柄等级: h6  
 D1 = 3, 4 & 5 mm: 碳化钢  
 D1 ≥ 6 mm: 碳化钢 或 高速钢

配送:

- 内置冷却液槽锁紧螺丝

Similar to DIN 69882-8

与DIN 69882-B 型相似



K	D1	D2	D3	L	L1	L2	G	COD. Form AD	Availability 库存状况	COD. Form AD + B	Availability 库存状况	
40	12	27	36	80	46	10	M-10	-	-	012 33 42 12 12	■	301 02 33 10 02
40	16	33	43	80	49	10	M-12	012 13 42 12 16	■	012 33 42 12 16	■	301 02 33 12 02
40	20	44	50	80	51	10	M-16	-	-	012 33 42 12 20	■	301 02 33 16 02
40	25	48	50	100	57	10	M-16	-	-	012 33 42 12 25	■	301 02 33 16 02
40	32	48	50	100	62	10	M-16	-	-	012 33 42 12 32	■	301 02 33 16 02
50	12	27	35	80	46	10	M-10	-	-	012 33 42 14 12	■	301 02 33 10 02
50	16	33	54	80	49	10	M-12	-	-	012 33 42 14 16	■	301 02 33 12 02
50	20	44	42	80	51	10	M-16	012 13 42 14 20	■	012 33 42 14 20	■	301 02 33 16 02
50	25	48	56	100	57	10	M-16	012 13 42 14 25	■	012 33 42 14 25	■	301 02 33 16 02
50	32	48	56	100	57	10	M-16	-	-	012 33 42 14 32	■	301 02 33 16 02

Characteristics:

- Heat resistant hot-working steel.
- Tempered: 54 -2 HRC.
- Taper manufactured according DIN-69871.
- Balanced according to ISO-1940-1 to G2,5 at 25.000 r.p.m.

Application:

- Machining where it requires an exceptional tool hold and high accuracy.
  - Vibrations reductions due to hold section increase.
  - For a correct function it is recommended:
- Shank tolerance: h6.  
 D1 = 3, 4 & 5: Carbide  
 D1 ≥ 6 mm: Carbide or HSS

Delivery:

- With built-in bored through stop screw.

特色:

- 使用耐热钢打造
- 回火: 54-2 HRC
- 锥头为DIN-69871 型
- 根据ISO 1940-1 动平衡标准转速二万五千时为 G 2.5

应用:

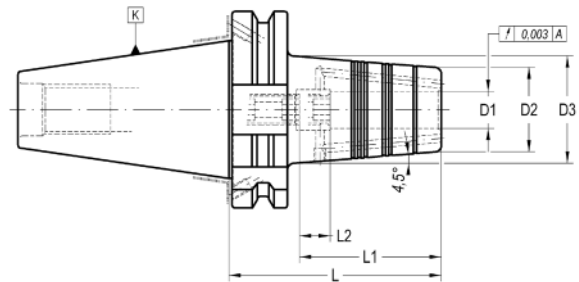
- 装设使用的跳动精度极高
  - 特殊设计的夹持部分增强防震效果
  - 使其正常运作应注意:
- 刀柄等级: h6  
 D1 = 3, 4 & 5 mm: 碳化钢  
 D1 ≥ 6 mm: 碳化钢 或 高速钢

配送:

- 内置冷却液槽锁紧螺丝

DOUBLE CONTACT. Similar to DIN 69882-8

双头夹持刀柄，与DIN 69882-B 型相似



K	D1	D2	D3	L	L1	L2	G	COD. Form AD	Availability 库存状况	COD. Form AD + B	Availability 库存状况	
40	12	27	35	70	46	10	M-10	-	-	012 53 62 02 12	■	301 02 33 10 04
40	16	33	41	75	49	10	M-12	012 43 62 02 16	□	012 53 62 02 16	■	301 02 33 12 04
40	20	44	50	75	51	10	M-16	-	-	012 53 62 02 20	■	301 02 33 16 04
40	25	48	50	85	57	10	M-16	-	-	012 53 62 02 25	■	301 02 33 16 04
50	12	27	34	70	46	10	M-10	-	-	012 53 62 04 12	■	301 02 33 10 04
50	16	33	41	75	49	10	M-12	-	-	012 53 62 04 16	■	301 02 33 12 04
50	20	44	53	75	51	10	M-16	-	-	012 53 62 04 20	■	301 02 33 16 04
50	25	48	56	85	57	10	M-16	-	-	012 53 62 04 25	■	301 02 33 16 04

Characteristics:

- Heat resistant hot-working steel.
- Tempered: 54-2 HRC.
- Taper manufactured according DIN-69871.
- Balanced according to ISO-1940-1 to G2,5 at 25.000 r.p.m.

Application:

- Machining where it requires an exceptional tool hold and high accuracy.
- Vibrations reductions due to hold section increase.
- For a correct function it is recommended:

Shank tolerance: h6.

D1 = 3, 4 & 5: Carbide

D1 ≥ 6 mm: Carbide or HSS

Delivery:

- With built-in bored through stop screw.

特色:

- 使用耐热钢打造
- 回火: 54-2 HRC
- 锥头为DIN-69871 型
- 根据ISO 1940-1 动平衡标准转速二万五千时为 G 2.5

应用:

- 装设使用的跳动精度极高
- 特殊设计的夹持部分增强防震效果
- 使其正常运作应注意:

刀柄等级: h6

D1 = 3, 4 & 5 mm: 碳化钢

D1 ≥ 6 mm: 碳化钢 或 高速钢

配送:

- 内置冷却液槽锁紧螺丝



# TAPPING CHUCKS WITH RELEASING DRIVE SYSTEM

柔性攻丝刀柄

019 13 51 ... 1.

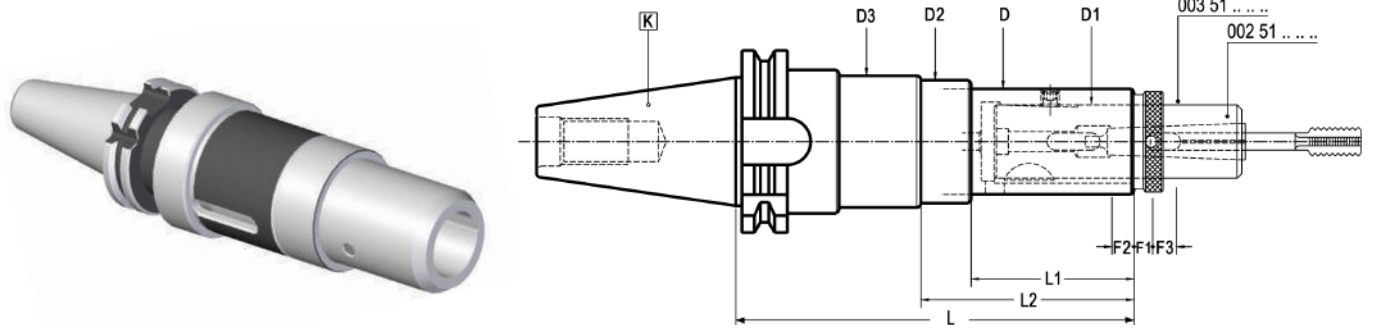


HSK

DIN 69871

Self feed and compression system. Releasing drive system. For axial adjustable adapter DIN 6327.

带轴向与长度补偿及释放驱动系统，适用于DIN 6327 型轴向可调式转换柄



K	CAP.	D1	L	D	L1	D2	L2	D3	F1	F2	F3	COD. Form A	Availability 库存状况
40	M3-M16	25	171	37	61	44	80	49	5	10	10	019 13 51 02 02 12	<input type="checkbox"/>
40	M8-M24	32	203	51	59	60	85	66	6	10	12	019 13 51 02 03 13	<input type="checkbox"/>
45	M3-M16	25	153	37	61	44	80	49	5	10	10	019 13 51 03 02 12	<input type="checkbox"/>
45	M8-M24	32	190	51	59	60	85	66	6	10	12	019 13 51 03 03 13	<input type="checkbox"/>
50	M3-M16	25	156	37	61	44	80	49	5	10	10	019 13 51 04 02 12	<input type="checkbox"/>
50	M8-M24	32	186	51	59	60	85	66	6	10	12	019 13 51 04 03 13	<input type="checkbox"/>

- Axial compensation (compression and extensions) values are F1 and F2. F3 is the release value (the tap receives only reversing rotation). The release system allows to easily and accurately set up tapping depth, specially adapt for blind holes.

— F1 & F2 为轴向调整（拉伸与延长）数值，F3 为释放值，刀具只会接收到扭转值。释放驱动系统能够简便正确地设定攻丝深度，尤其适合制造盲孔时使用。

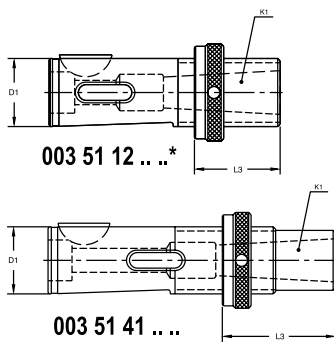
## RELATED ELEMENTS Page: 245

相关配件

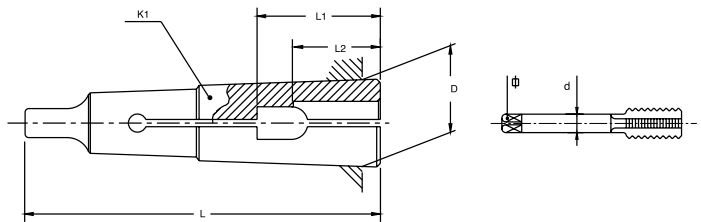


002 51 ... 003 51 41 ... 003 51 12 ...

DIN 6327



DIN 6328



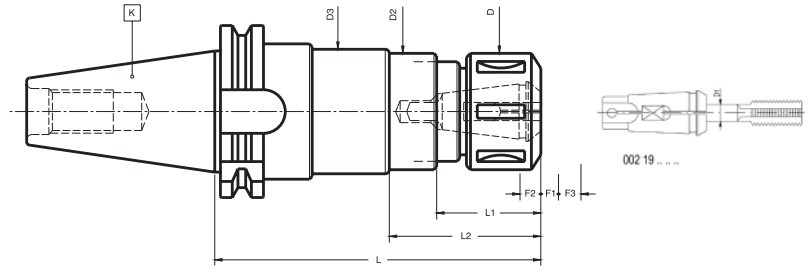
To order: CODE + Diameter  $d \times \Phi$  • Example: 002 51 02 - 4 x 3

订购时请写明：产品编号+直径  $d \times \Phi$

D1	K1	L3	COD.
25	MORSE 1	12- 42	003 51 12 05 20*
		37- 67	003 51 41 05 21
		62- 92	003 51 41 05 22
		87-117	003 51 41 05 23
		112-142	003 51 41 05 24
	MORSE 2	12- 42	003 51 12 05 30*
		37- 67	003 51 41 05 31
		62- 92	003 51 41 05 32
		87-117	003 51 41 05 33
		112-142	003 51 41 05 34
32	MORSE 2	12- 50	003 51 12 07 30*
		42- 80	003 51 41 07 31
		72-110	003 51 41 07 32
		102-140	003 51 41 07 33
		132-170	003 51 41 07 34
	MORSE 3	12- 50	003 51 12 07 40*
		42- 80	003 51 41 07 41
		72-110	003 51 41 07 42
		102-140	003 51 41 07 43
		132-170	003 51 41 07 44

002 51 02 ...	D	L	d	2,5	2,8	3,15	3,5	3,55	4	4,5	5	5,5	5,6	6	6,3	7	7,1	8		
	12,06	65,5	$\Phi$	2,1	2,1	2,5	2,7	2,8	3	3,4	4	4,3	4,5	4,9	5	5,5	5,6	6,2		
			L1	19	22	21	22	21	25	24	25	26	28	26	28	27	30	32	26	28
L2	15	18	16	18	16	19	18	19	19,5	22	19,5	22	19,5	22	19,5	22	19,5	22	19,5	
002 51 03 ...	D	L	d	4,5	5	5,5	5,6	6	6,3	7	7,1	8	9	9,5	10	11	11,2	12	12,5	
	17,78	80	$\Phi$	3,4	4	4,3	4,5	4,9	5	5,5	5,6	6,2	7	8	9	9	10	11	12	12,5
			L1	21	25	24	25	26	28	26	28	27	30	32	34	36	36	36	36	36
L2	16	19	18	19	19,5	22	19,5	22	19,5	22	19,5	22	23	24	26	25	26	26		
002 51 04 ...	D	L	d	8	9	9,5	10	11	11,2	12	12,5	14	16	18						
	23,82	99	$\Phi$	6,2	7	8	9	10	11	12	12,5	14	16	18						
			L1	27	30	32	34	36	38	44	48									
L2	19,5	22	23	24	26	25	26	30	33											

Self feed and compression system. Releasing drive system. For LAIP 002 19 collet.  
带轴向与长度补偿及释放驱动系统，适用于LAIP 002 19 筒夹



K	CAP.	L	D	L1	D2	L2	D3	F1	F2	F3	COD. Form A	Availability 库存状况
40	M3-M16	150	43	39	44	58	49	5	10	10	019 13 51 02 02 22	<input type="checkbox"/>
40	M8-M28	173	50	42	60	68	66	6	10	12	019 13 51 02 03 23	<input type="checkbox"/>
45	M3-M16	131	43	39	44	58	49	5	10	10	019 13 51 03 02 22	<input type="checkbox"/>
45	M8-M28	173	50	42	60	68	66	6	10	12	019 13 51 03 03 23	<input type="checkbox"/>

- Axial compensation (compression and extensions) values are F1 and F2. F3 is the release value (the tap receives only reversing rotation). The release system allows to easily and accurately set up tapping depth, specially adapt for blind holes.

— F1 & F2 为轴向调整（拉伸与延长）数值，F3 为释放值，刀具只会接收到扭转值。释放驱动系统能够简便正确地设定攻丝深度，尤其适合制造盲孔时使用。

ACCESSORIES INCLUDED: Bearing nut  
出货包含配件：轴承螺母



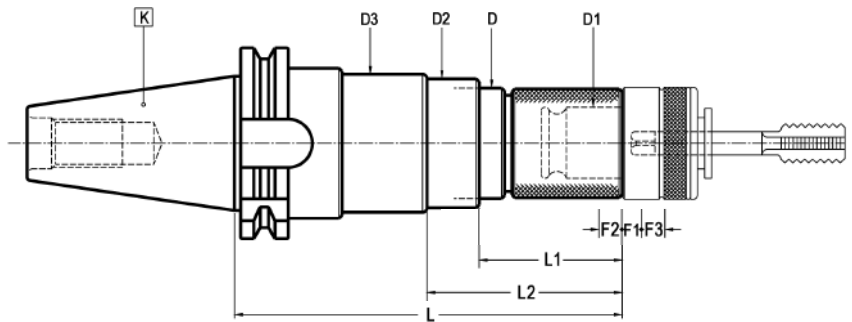
CAP.  
M3-M16 004 99 01 02 03  
M8-M28 004 99 01 02 04

OPTIONAL ACCESSORIES  
选购配件



CAP.  
M3-M16 004 99 04 09 08  
M8-M28 004 99 04 09 09

Self feed and compression system. Releasing drive system. For BILZ system tap adapter.  
带轴向与长度补偿及释放驱动系统，适用于BILZ系统转换刀柄



K	CAP.	D1	L	D	L1	D2	L2	D3	F1	F2	F3	COD. Form A	Availability 库存状况
40	M3-M12 (M16)*	19	154	37	44	44	63	49	5	10	10	019 13 51 02 02 32	<input type="checkbox"/>
40	M8-M20 (M30)*	31	195	51	63	60	89	66	6	10	12	019 13 51 02 03 33	<input type="checkbox"/>
45	M3-M12 (M16)*	19	136	37	44	44	63	49	5	10	10	019 13 51 03 02 32	<input type="checkbox"/>
45	M8-M20 (M30)*	31	194	51	63	60	89	66	6	10	12	019 13 51 03 03 33	<input type="checkbox"/>
50	M3-M12 (M16)*	19	139	37	44	44	63	49	5	10	10	019 13 51 04 02 32	<input type="checkbox"/>

- Axial compensation (compression and extensions) values are F1 and F2. F3 is the release value (the tap receives only reversing rotation). The release system allows to easily and accurately set up tapping depth, specially adapt for blind holes.

\* With 002 22 ... .. y 002 24 ... .. adapters.

— F1 & F2 为轴向调整（拉伸与延长）数值，F3 为释放值，刀具只会接收到扭转值。释放驱动系统能够简便正确地设定攻丝深度，尤其适合制造盲孔时使用。

\* 与 002 22 ... .. 及 002 24 ... .. 系列转换柄搭配使用

RELATIONATED ELEMENTS Page: 262  
相关配件



# QUICK-CHANGE TAPPING CHUCKS

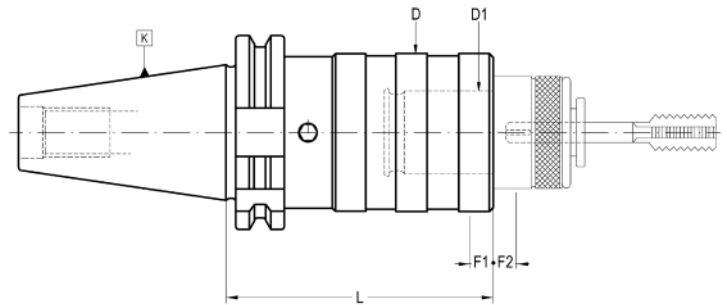
## 微调快换攻丝刀柄

019 13 52 ...



With self feed and compression system. For BILZ system tap adapter.

带轴向补偿系统，适用于BILZ系统转换刀柄



K	Cap.	D1	L	D2	F1	F2	COD. Form A	Availability 库存状况
30	M3-M12 (M16)*	19	65	36	7,5	7,5	019 13 52 01 02	■
40	M3-M12 (M16)*	19	60	36	7,5	7,5	019 13 52 02 02	■
40	M8-M20 (M30)*	31	98	53	12,5	12,5	019 13 52 02 03	■
40	M14-M33 (M48)*	48	150	78	20	20	019 13 52 02 04	■
50	M3-M12 (M16)*	19	75	36	7,5	7,5	019 13 52 04 02	■
50	M8-M20 (M30)*	31	85	53	12,5	12,5	019 13 52 04 03	■
50	M14-M33 (M48)*	48	140	78	20	20	019 13 52 04 04	■

- F1 Compression run.

- F2 Extension run.

\* With 002 22 ... and 002 24 ... adapters.

— F1 压缩长度

— F2 拉伸长度

\* 与 002 22 ... & 002 24 ... 系列转换柄搭配使用

### RELATIONATED ELEMENTS Page: 262

相关配件



002 20 00 ...



002 21 ...



002 22 ...



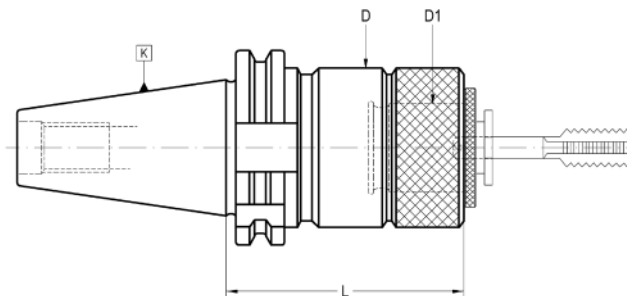
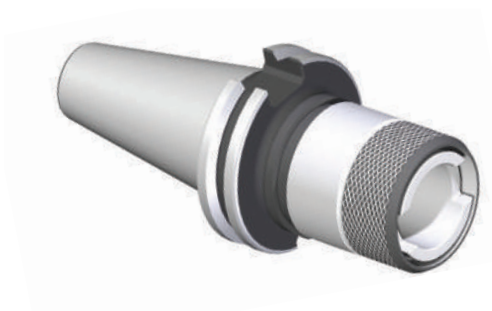
002 23 ...



002 24 ...

For synchronized feed control machines.

刚性控制攻丝机床专用



K	Cap.	D1	L	D	COD. Form AD	Availability Disponibilidad Verfügbarkeit	COD. Form AD + B	Availability Disponibilidad Verfügbarkeit
40	M3-M12 (M16)*	19	60	32	019 13 53 02 02	■	-	-
40	M8-M20 (M30)*	31	80	50	019 13 53 02 03	■	-	-
50	M3-M12 (M16)*	19	60	32	019 13 53 04 02	■	019 33 53 04 02	■
50	M8-M20 (M30)*	31	80	50	019 13 53 04 03	■	019 33 53 04 03	■
50	M14-M33 (M48)*	48	110	72	019 13 53 04 04	■	019 33 53 04 04	■

\* With 002 22 ... adapters.

\* 与 002 22 ... 系列转换柄搭配使用

RELATIONATED ELEMENTS Page: 262

相关配件



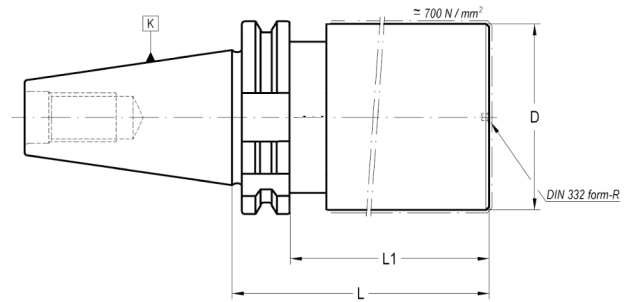
002 20 00 ...



002 21 .....



002 22 .....



K	D	L	L1	COD. Form A	Availability 库存状况
30	45	100	81	020 13 02 01 51	■
40	62	160	141	020 13 02 02 73	■
40	62	250	231	020 13 02 02 75	■
45	80	160	141	020 13 02 03 83	■
50	90	160	141	020 13 02 04 93	■
50	90	250	231	020 13 02 04 95	■

- The area of diameter D and length L1 has approximately 700N/mm<sup>2</sup>.  
 - Rest is hardened to 57 ÷ 60 HRC.  
 - Other dimensions on request.

— 直径 D 与长度 L1 部分的抗压强度约为 700N/mm<sup>2</sup>  
 — 其他部分经过强化为洛氏硬度 57 ÷ 60 HRC  
 — 如需其他尺寸请洽询