



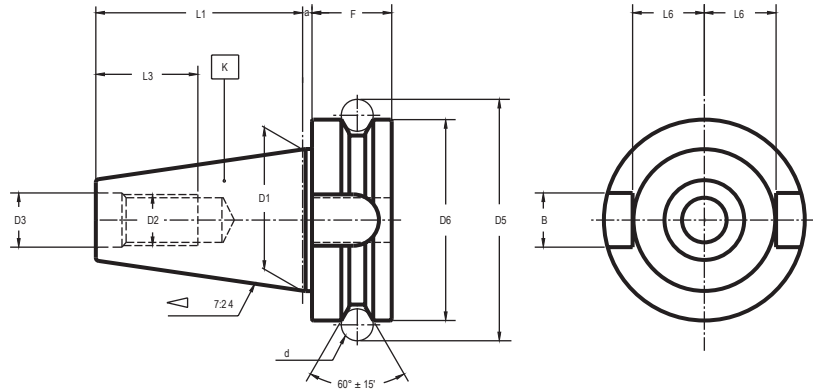
Laip

JIS BT 6339

FORM A

Without coolant through.

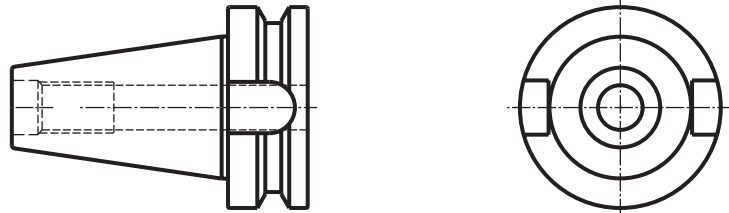
A 型
无冷却



FORM AD

With central coolant channel.

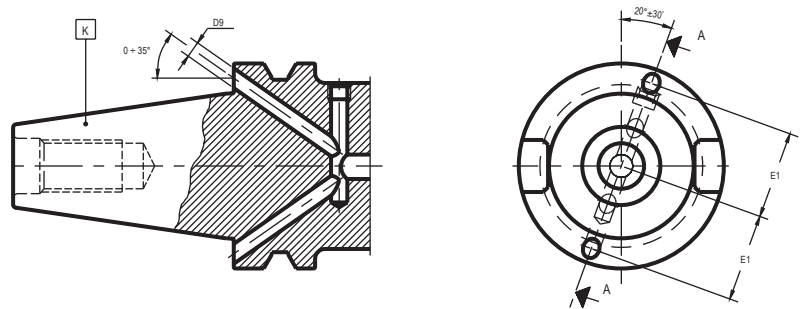
AD 型
中央冷却液供应



FORM B

With flange through coolant channels.

B 型
侧边冷却液供应

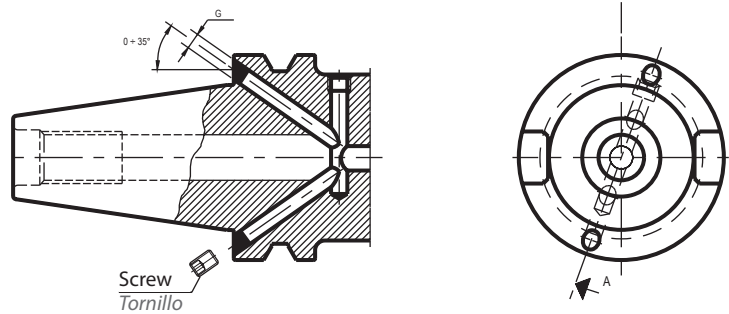


FORM AD + B

With central and flange through coolant channels.

Delivery: with two bolts to sealed flange channels.

AD + B 型
中央与侧边冷却液供应
配送: 包含两个锁紧侧边供液的螺钉



K	B H12	D1	D2	D3 H8	D5	D6 h8	D9	L1 ± 0,15	L3 min.	L6 ⁰ / _{-0,2}	a ± 0,4	d	E1 ± 0,4	F	G
30	16,1	31,75	M-12	12,5	56,14	46	4	48,4	24	16,3	2	8	21	20	M-4
35	16,1	38,10	M-12	12,5	65,68	53	4	56,4	24	19,6	2	10	-	22	M-4
40	16,1	44,45	M-16	17	75,68	63	4	65,4	30	22,6	2	10	27	25	M-4
45	19,3	57,15	M-20	21	100,21	85	5	82,8	38	29,1	3	12	35	30	M-6
50	25,7	69,85	M-24	25	119,02	100	6	101,8	45	35,4	3	15	42	35	M-6

Material

Case-hardening alloy steel.
Case-hardened and tempered.
Minium strength in core 880 N/mm²
Surface hardness HRC 57 ÷ 60

Taper tolerance

Grade AT3.

材质

表面特殊处理过的合金钢
经过强化与回火
轴心最低抗压强度为 880 N/mm²
表面强度为洛氏硬度 HRC 57 ÷ 60

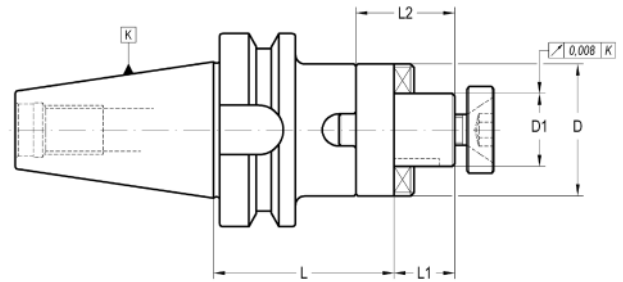
锥头标准
AT3 等级

	UNIVERSAL ARBORS 万能铣刀柄	100		GREAT POWER COLLET CHUCKS - ELS - 强力夹持-双通道内冷	114
	SHELL END MILL ARBORS 面铣刀柄	101		HIGH POWER TORQUE CHUCK - HPTC 强力夹持-加强型	115
	SHELL END MILL ARBORS WITH COOLING 内冷面铣刀柄	102		ROTATORY COOLANT ADAPTERS 外转内冷刀柄	116
	DRILL CHUCK ARBORS 钻夹头转换柄	103		WELDON HOLDERS 侧固式刀柄	119
	REDUCER TO MORSE WITHOUT DRIVING SLOT 莫氏锥度无扁尾转换柄	104		WELDON-WHISTLE-NOTCH HOLDERS 斜2度侧固式刀柄	121
	REDUCER TO MORSE WITH DRIVING SLOT 莫氏锥度有扁尾转换柄	104		SHORT DRILL CHUCKS 钻夹头	122
	EXTENSIONS AND REDUCING ADAPTERS TO MORSE 莫氏锥度转换柄	105		SHRINK FIT CHUCKS 热胀刀柄	123
	BT ADAPTERS TO DIN 69893 - HSK BT -HSK转换柄	106		SHRINK FIT CHUCKS WITH COOLANT - ELS - 热胀刀柄-双通道内冷	125
	HOLDERS FOR ADJUSTABLE ADAPTERS DIN 6327 SK-DIN 6327 转换柄	107		SHRINK FIT CHUCKS - SLIM LINE - 热胀刀柄-超薄型	126
	REDUCING ADAPTERS TO ISO. For tools with taper ISO ISO型锥头刀具用减径套	108		TAPPING CHUCKS WITH RELEASING DRIVE SYSTEM 柔性攻丝刀柄	127
	REDUCING ADAPTERS TO ISO. With double effect pull stud ISO型锥头刀具用减径套, 带可调式拉钉	108		TAPPING CHUCKS WITH RELEASING DRIVE SYSTEM 柔性攻丝刀柄	128
	BASIC ADAPTER FOR MODULAR TOOLING 模块化刀柄	109		TAPPING CHUCKS WITH RELEASING DRIVE SYSTEM 柔性攻丝刀柄	129
	FRONT CONTACT ADAPTERS FOR SCREW IN TOOLS 螺纹连接刀柄	110		QUICK-CHANGE TAPPING CHUCKS 微调快换攻丝刀柄	130
	COLLET CHUCKS FOR DIN 6388 COLLETS DIN 6388 型筒夹刀柄	111		QUICK-CHANGE SOLID DRIVE TAPPING CHUCKS 刚性快换攻丝刀柄	131
	COLLET CHUCKS ER TYPE (DIN 6499) 高速刀柄	112		TOOLHOLDER BLANKS 毛坯柄	132
	GREAT POWER COLLET CHUCKS -SLIM LINE- 强力夹持-超薄型	113			

For milling cutters with longitudinal or driving slot DIN 138.

适用于 DIN 138 型长度或驱动槽铣刀

DIN 6358



K	D1 h6	L	L1	L2	D	COD. Form A	Availability 库存状况
30	16	50	17	27	32	001 12 02 01 30	■
30	22	50	19	31	40	001 12 02 01 40	■
30	27	55	21	33	48	001 12 02 01 50	■
40	16	55	17	27	32	001 12 02 02 30	■
40	16	100	17	27	32	001 12 02 02 31	■
40	22	55	19	31	40	001 12 02 02 40	■
40	22	100	19	31	40	001 12 02 02 41	■
40	27	55	21	33	48	001 12 02 02 50	■
40	27	100	21	33	48	001 12 02 02 51	■
40	32	60	24	38	58	001 12 02 02 60	■
40	32	100	24	38	58	001 12 02 02 61	■
40	40	60	27	41	70	001 12 02 02 70	■
40	40	100	27	41	70	001 12 02 02 71	■
50	16	70	17	27	32	001 12 02 04 30	■
50	16	100	17	27	32	001 12 02 04 31	■
50	22	70	19	31	40	001 12 02 04 40	■
50	22	100	19	31	40	001 12 02 04 41	■
50	27	70	21	33	48	001 12 02 04 50	■
50	27	100	21	33	48	001 12 02 04 51	■
50	32	70	24	38	58	001 12 02 04 60	■
50	32	100	24	38	58	001 12 02 04 61	■
50	40	70	27	41	70	001 12 02 04 70	■
50	40	100	27	41	70	001 12 02 04 71	■
50	50	70	30	46	90	001 12 02 04 80	■
50	50	125	30	46	90	001 12 02 04 81	■

ACCESSORIES INCLUDED

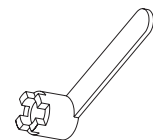
出货包含配件



D ₁	001 99 02 01 30	001 99 01 22 30	001 99 01 12 30
16	001 99 02 01 30	001 99 01 22 30	001 99 01 12 30
22	001 99 02 01 40	001 99 01 22 40	001 99 01 12 40
27	001 99 02 01 50	001 99 01 22 50	001 99 01 12 50
32	001 99 02 01 60	001 99 01 22 60	001 99 01 12 60
40	001 99 02 01 70	001 99 01 22 70	001 99 01 12 70
50	001 99 02 01 80	001 99 01 22 80	001 99 01 12 80

OPTIONAL ACCESSORIES

选购配件



D ₁	001 99 03 02 30	001 99 01 01 30	001 99 04 01 30
16	001 99 03 02 30	001 99 01 01 30	001 99 04 01 30
22	001 99 03 02 40	001 99 01 01 40	001 99 04 01 40
27	001 99 03 02 50	001 99 01 01 50	001 99 04 01 50
32	001 99 03 02 60	001 99 01 01 60	001 99 04 01 60
40	001 99 03 02 70	001 99 01 01 70	001 99 04 01 70
50	001 99 03 02 80	001 99 01 01 80	001 99 04 01 80

SHELL END MILL ARBORS

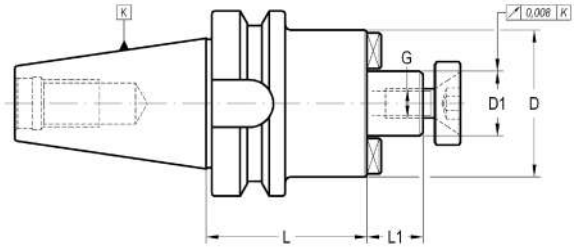
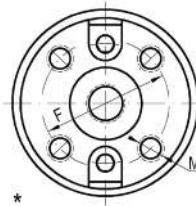
面铣刀柄

001 12 03/05 ...



For shell end mills with driving slot DIN 138.
适用于 DIN 138 型驱动槽铣刀

DIN 6357



K	D1 h6	L	L1	D	F	M	G	COD. Form A	Availability 库存状况
40	16	55	17	38/40	-	-	M-8	001 12 05 02 30	■
40	16	120	17	38/40	-	-	M-8	001 12 05 02 31	■
40	22	55	19	48/50	-	-	M-10	001 12 05 02 40	■
40	22	120	19	48/50	-	-	M-10	001 12 05 02 41	■
40	27	55	21	60	-	-	M-12	001 12 05 02 50	■
40	27	120	21	60	-	-	M-12	001 12 05 02 51	■
40	32	60	24	70	-	-	M-16	001 12 05 02 60	■
40	32	120	24	70	-	-	M-16	001 12 05 02 61	■
* 40	40	60	27	89	66,7	M-12	M-20	001 12 03 02 70	■
* 40	40	120	27	89	66,7	M-12	M-20	001 12 03 02 71	■
50	16	55	17	38/40	-	-	M-8	001 12 05 04 30	■
50	16	120	17	38/40	-	-	M-8	001 12 05 04 31	■
50	22	55	19	48/50	-	-	M-10	001 12 05 04 40	■
50	22	120	19	48/50	-	-	M-10	001 12 05 04 41	■
50	27	55	21	60	-	-	M-12	001 12 05 04 50	■
50	27	120	21	60	-	-	M-12	001 12 05 04 51	■
50	32	55	24	70	-	-	M-16	001 12 05 04 60	■
50	32	120	24	70	-	-	M-16	001 12 05 04 61	■
* 50	40	70	27	89	66,7	M-12	M-20	001 12 03 04 70	■
* 50	40	120	27	89	66,7	M-12	M-20	001 12 03 04 71	■
* 50	60	70	40	129	101,6	M-16	-	001 12 03 04 90	■
* 50	60	120	40	129	101,6	M-16	-	001 12 03 04 91	■

*With additional 4 tapped holes for front clamping according to DIN 2079.

* 根据DIN 2079 加置四个刀具夹持孔

ACCESSORIES INCLUDED

出货包含配件

D ₁	Hex Nut	Washer	Pin	Washer	Pin
16	-	303 05 05 00 30	301 01 01 03 12	001 99 01 22 30	001 99 01 12 30
22	-	303 05 05 00 40	301 01 01 04 12	001 99 01 22 40	001 99 01 12 40
27	-	303 05 05 00 50	301 01 01 05 12	001 99 01 22 50	001 99 01 12 50
32	-	303 05 05 00 60	301 01 01 05 16	001 99 01 22 60	001 99 01 12 60
40	003 99 01 01 01	-	301 01 01 06 16	001 99 01 22 70	001 99 01 12 70
60	-	303 05 04 00 02	301 01 01 12 25	-	-

OPTIONAL ACCESSORIES

选购配件

D ₁	Pin	Pin
16	001 99 01 01 30	001 99 04 01 30
22	001 99 01 01 40	001 99 04 01 40
27	001 99 01 01 50	001 99 04 01 50
32	001 99 01 01 60	001 99 04 01 60
40	001 99 01 01 70	001 99 04 01 70
60	-	-

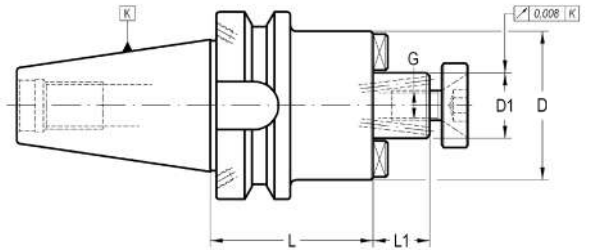
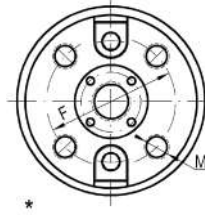
SHELL END MILL ARBORS WITH INTERNAL COOLING

内冷面铣刀柄

001 32 33/35 ...



For shell end mills with driving slot DIN 138.
适用于 DIN 138 型驱动槽壳铣刀



K	D1 h6	L	L1	D	F	M	G	COD. Form AD + B	Availability 库存状况
40	16	55	17	38/40	-	-	M-8	001 32 35 02 30	■
40	22	55	19	48/50	-	-	M-10	001 32 35 02 40	■
40	27	55	21	60	-	-	M-12	001 32 35 02 50	■
40	32	60	24	70	-	-	M-16	001 32 35 02 60	■
* 40	40	60	27	89	66,7	M-12	M-20	001 32 33 02 70	■
50	16	55	17	38/40	-	-	M-8	001 32 35 04 30	■
50	22	55	19	48/50	-	-	M-10	001 32 35 04 40	■
50	27	55	21	60	-	-	M-12	001 32 35 04 50	■
50	32	55	24	70	-	-	M-16	001 32 35 04 60	■
* 50	40	55	27	89	66,7	M-12	M-20	001 32 33 04 70	■
* 50	60	70	40	129	101,6	M-16	-	001 32 33 04 90	■

* With additional 4 tapped holes for front clamping according to DIN 2079.

* 根据DIN 2079 加置四个刀具夹持孔

ACCESSORIES INCLUDED

出货包含配件

D ₁	Hex Nut	Washer	Pin	Pin	Washer	Pin
16	-	303 05 05 00 30	301 01 01 03 12	301 01 09 08 20	-	-
22	-	303 05 05 00 40	301 01 01 04 12	301 01 09 10 25	-	-
27	-	303 05 05 00 50	301 01 01 05 12	301 01 01 12 25	-	-
32	-	303 05 05 00 60	301 01 01 05 16	301 01 01 16 30	-	-
40	003 99 01 01 01	-	301 01 01 06 16	-	001 99 01 22 70	001 99 01 12 70
60	-	303 05 04 00 02	301 01 01 12 25	-	-	-

OPTIONAL ACCESSORIES

选购配件

D ₁	Pin	Pin
16	001 99 01 01 30	001 99 04 01 30
22	001 99 01 01 40	001 99 04 01 40
27	001 99 01 01 50	001 99 04 01 50
32	001 99 01 01 60	001 99 04 01 60
40	001 99 01 01 70	001 99 04 01 70
60	-	-

DRILL CHUCK ARBORS

钻夹头转柄柄转换刀杆



001 12 50 ...

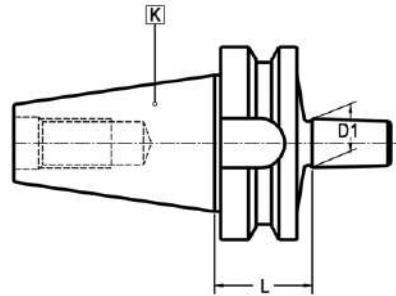
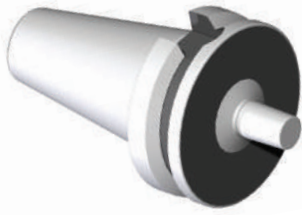
For DIN 238 or JACOBS.

适用于 DIN 238 或 JACOBS 系统

HSK

DIN
69871

BT



K	B - J	L	D1	COD. Form A	Availability 库存状况
30	B.12	25	12,06	001 12 50 01 01	■
30	B.16	25	15,73	001 12 50 01 02	■
40	B.12	32	12,06	001 12 50 02 01	■
40	B.16	32	15,73	001 12 50 02 02	■
40	B.18	32	17,78	001 12 50 02 03	■
50	B.16	43	15,73	001 12 50 04 02	■
50	B.18	43	17,78	001 12 50 04 03	■
30	J.1	25	9,754	001 12 50 01 12	■
30	J.2	25	14,199	001 12 50 01 13	■
30	J.6	25	17,78	001 12 50 01 18	■
35	J.6	30	17,78	001 12 50 11 18	□
40	J.2	32	11,199	001 12 50 02 13	■
40	J.33	32	15,85	001 12 50 02 19	■
50	J.33	43	15,85	001 12 50 04 19	■
50	J.3	43	20,599	001 12 50 04 15	■

Circular deviation between K and D1 ≤ 0,008

K 与 D1 之间的圆度偏差 ≤ 0.008

REDUCER TO MORSE WITHOUT DRIVING SLOT

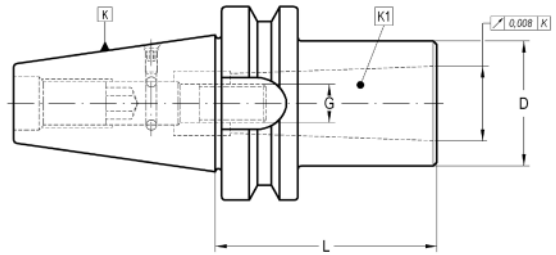
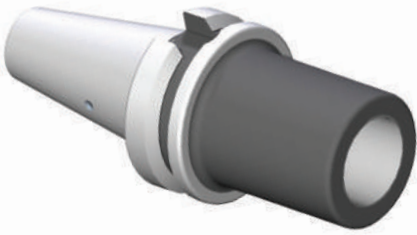
莫氏锥度无扁尾转换柄

003 12 02 ...



With double effect pull stud For Morse taper tools with thread DIN 228-A.
带可调节式拉钉接头，适用于DIN 228-A 型带螺纹莫氏锥度工具

DIN 6364 (*)



K	K1	L	D	G	COD. Form A	Availability 库存状况			
30	2	62	32	M-10	003 12 02 01 30	□	003 99 08 01 30	304 01 00 03 00	301 01 07 04 05
40	2	50	32	M-10	003 12 02 02 30	■	003 99 08 02 30	304 01 00 04 00	301 01 03 05 08
40	3	70	40	M-12	003 12 02 02 40	■	003 99 08 02 40	304 01 00 04 00	301 01 03 05 08
*40	4	95	48	M-16	003 12 02 02 50	■	003 99 08 02 50	304 01 00 04 00	301 01 03 05 08
50	2	60	32	M-10	003 12 02 04 30	■	003 99 08 04 30	304 01 00 04 00	301 01 03 05 12
50	3	65	40	M-12	003 12 02 04 40	■	003 99 08 04 40	304 01 00 04 00	301 01 03 05 12
*50	4	75	48	M-16	003 12 02 04 50	■	003 99 08 04 50	304 01 00 04 00	301 01 03 05 12
*50	5	103	63	M-20	003 12 02 04 60	■	003 99 08 04 60	304 01 00 04 00	301 01 03 05 12

* These positions are not according to DIN 6364 (No driving slot DIN 2201).

* 此产品不符合 DIN 6364 规格 (无 DIN 2201 驱动槽)

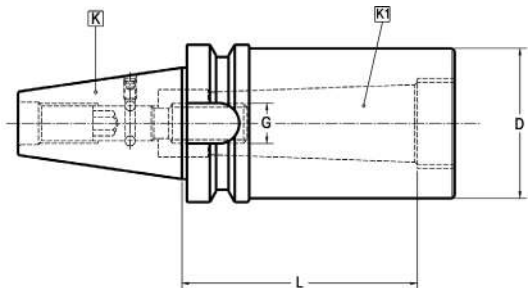
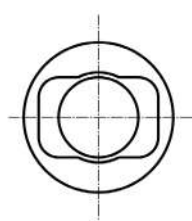
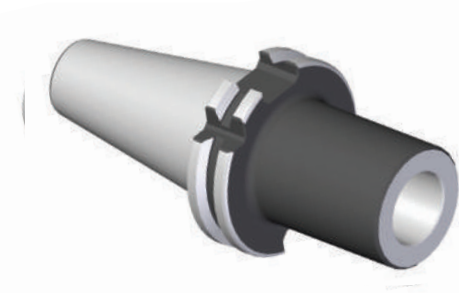
REDUCER TO MORSE WITHOUT DRIVING SLOT

莫氏锥度有扁尾转换柄

003 12 04 ...



With double effect pull stud For Morse taper tools with thread DIN 228-A.
带可调节式拉钉接头，适用于DIN 228-A 型带螺纹莫氏锥度工具

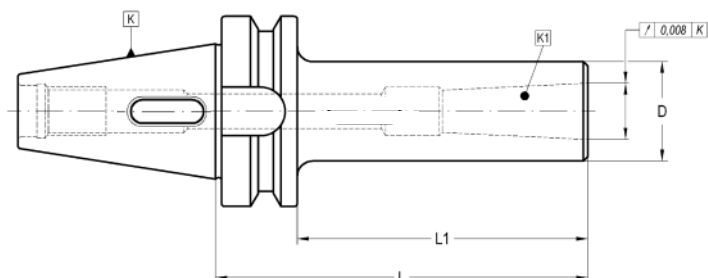
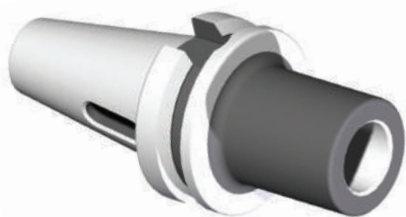




K	K1	L	D	G	COD. Form A	Availability Disponibilidad Verfügarkeit			
40	4	95	63	M-16	003 12 04 02 50	□	003 99 08 02 50	304 01 00 04 00	301 01 03 05 08
50	4	75	63	M-16	003 12 04 04 50	□	003 99 08 04 50	304 01 00 04 00	301 01 03 05 12

Circular deviation between K and D1 ≤ 0,008

For tapered Morse taper tools DIN 228-B or Morse taper tools with thread DIN 228-A.
适用于 DIN 228-B 型长度 或 DIN 228-A 型带螺纹刀具

DIN 6383



K	K1	L	L1	D	COD. Form AD	Availability 库存状况		
30	1	50	28	25	003 12 12 01 20	■	301 01 01 06 30	-
30	2	60	38	32	003 12 12 01 30	■	-	003 99 .. 01 30
30	3	80	58	40	003 12 12 01 40	■	-	003 99 .. 01 40
40	1	50	23	25	003 12 12 02 20	■	301 01 01 06 40	-
40	1	110	83	25	003 12 12 02 21	■	301 01 01 06 80	-
40	2	60	33	32	003 12 12 02 30	■	003 99 07 06 15	-
40	2	120	93	32	003 12 12 02 31	■	003 99 07 06 20	-
40	3	75	48	40	003 12 12 02 40	■	-	003 99 .. 02 40
40	3	135	108	40	003 12 12 02 41	■	-	003 99 .. 02 41
40	4	95	68	48	003 12 12 02 50	■	-	003 99 .. 02 50
40	4	165	138	48	003 12 12 02 51	■	-	003 99 .. 02 51
50	1	50	12	25	003 12 12 04 20	■	301 01 01 06 55	-
50	1	123	85	25	003 12 12 04 21	■	301 01 01 06 80	-
50	2	50	12	32	003 12 12 04 30	■	301 01 01 10 50	-
50	2	135	97	32	003 12 12 04 31	■	301 01 01 10 90	-
50	3	63	25	40	003 12 12 04 40	■	301 01 01 12 55	-
50	3	155	117	40	003 12 12 04 41	■	301 01 01 12 10	-
50	4	85	47	48	003 12 12 04 50	■	003 99 07 09 18	-
50	4	180	142	48	003 12 12 04 51	■	003 99 07 09 22	-
50	5	108	70	63	003 12 12 04 60	■	-	003 99 .. 02 60
50	5	215	177	63	003 12 12 04 61	■	-	003 99 .. 02 61

- 301 01 01 .. / 003 99 07 .. Pull stud for tools
with tightening thread according to DIN 228-A.

— 301 01 01 .. / 003 99 07 .. 使用DIN 228-A 型带螺纹工具时需要拉钉

RELATIONATED ELEMENTS Page: 183
相关配件



003 02 11 ...

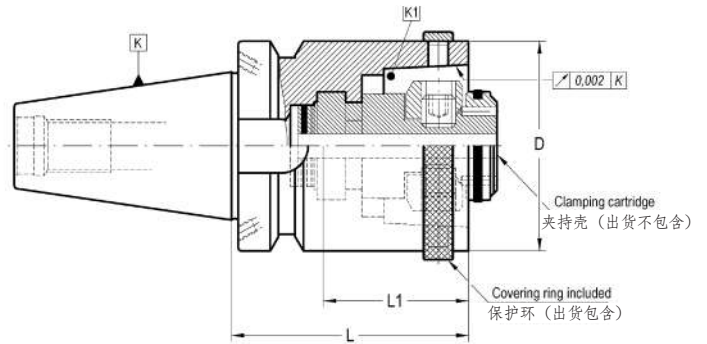
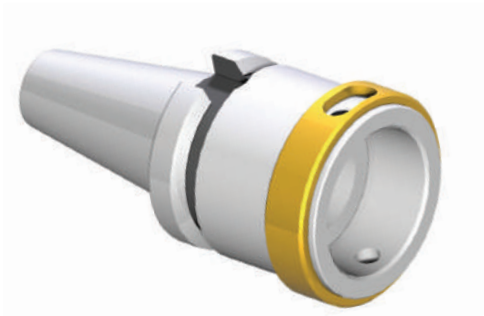
ADAPTERS JIS BT 6339 TO DIN 69063 - HSK

BT-HSK转换柄



003 32 14 ...

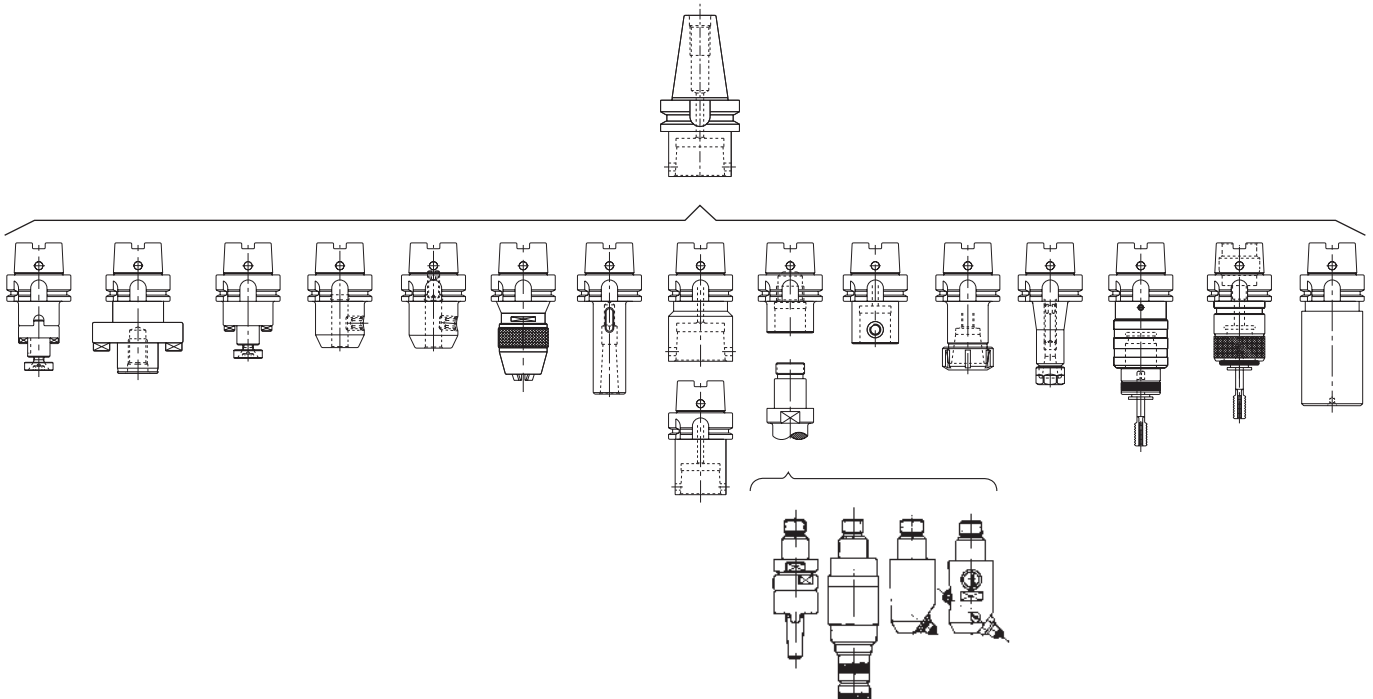
Prepared for MAPAL clamping system.
适用于MAPAL 夹持系统



K	K1	D	L	L1	COD. Form AD + B	Availability 库存状况
40	HSK-63	63	70	-	003 32 14 02 04	■
50	HSK-63	63	60	26,8	003 32 14 04 04	■

- Design for DIN 69893-1 Form A and C toolholders.
- Clamping cartridge not included.

— 专为 DIN 69893-1 FORM A & C 型刀柄设计
— 出货不包含夹持壳



ACCESSORIES INCLUDED Page: 58
出货包含配件

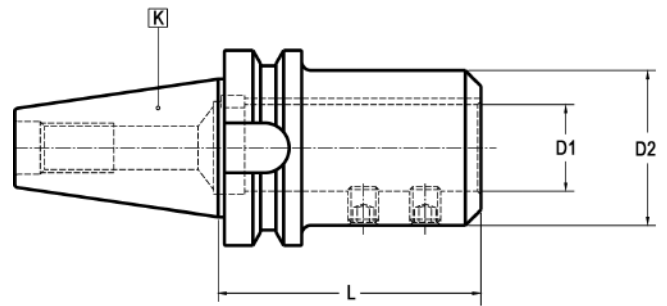


351 03 99 14 ..

OPTIONAL ACCESSORIES Page: 56
选购配件



003 99 99 50 ..



K	D1 H6	L	D2	COD. Form AD	Availability 库存状况	
30	28	105	50	003 12 21 01 60	<input type="checkbox"/>	301 01 03 10 12
40	28	85	50	003 12 21 02 60	<input type="checkbox"/>	301 01 03 10 12
40	36	120	63	003 12 21 02 80	<input type="checkbox"/>	301 01 03 12 14
50	28	100	55	003 12 21 04 60	<input type="checkbox"/>	301 01 03 12 14

RELATIONATED ELEMENTS Page: 245
相关配件

Circular deviation between K and D1 $\leq 0,008$
K 与 D1 之间的圆度偏差 ≤ 0.008

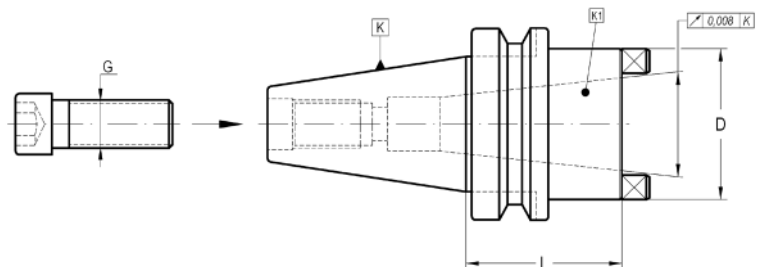


003 51 11 ... 004 51 06 ... 019 51 52 ...

REDUCING ADAPTERS TO ISO

ISO 转换柄

For tools with DIN 2080, DIN 69871 or MAS-BT taper.
For tools with DIN 2080, DIN 69871 or MAS-BT taper.
适用于 DIN 2080, DIN 69871 或 MAS-BT型锥头刀具



OPTIONAL

K	K1	L	D	G	COD. Form AD	Availability 库存状况		
50	40	51	70	M-16	003 12 31 04 02	<input checked="" type="checkbox"/>	003 99 07 09 14 (1)	003 99 07 09 18 (2)

- (1) Pull stud necessary to use DIN-2080 shanks.
- (2) Pull stud necessary to use DIN-69871 and BT shanks.
- These pull studs are supplied on request.

— (1) 使用 DIN-2080 型工具时需要拉钉
— (2) 使用 DIN-69871 与 MAS-BT 型工具时需要拉钉
— 如需拉钉请于订购时注明

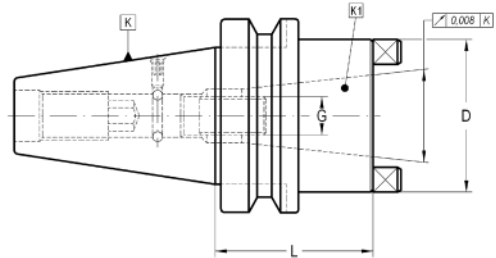
REDUCING ADAPTERS TO DIN 2080

DIN 2080 转换柄

003 12 32 ... 01



With double effect pull stud. For tools with DIN 2080 taper.
带可调节式拉钉接头，适用于DIN 2080 型锥头工具



K	K1	L	D	G	COD. Form AD	Availability 库存状况			
40	40	87	68	M-16	003 12 32 02 02 01	■	003 99 08 02 50	304 01 00 04 00	301 01 03 05 08
50	40	63	70	M-16	003 12 32 04 02 01	■	003 99 08 04 50	304 01 00 04 00	301 01 03 05 12

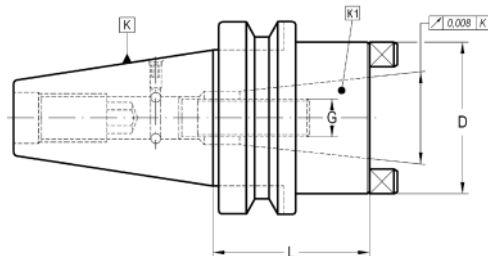
REDUCING ADAPTERS TO DIN 69871 / MAS 403 BT




DIN 69871/MAS 403 BT 转换柄

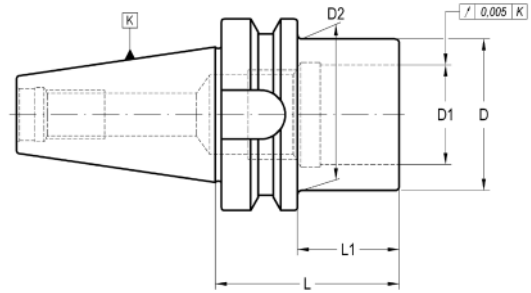
003 12 32 ... 02



With double effect pull stud. For tools with DIN 69871 or MAS-BT taper.
带可调节式拉钉接头，适用于DIN 69871 或 MAS-BT 型锥头工具

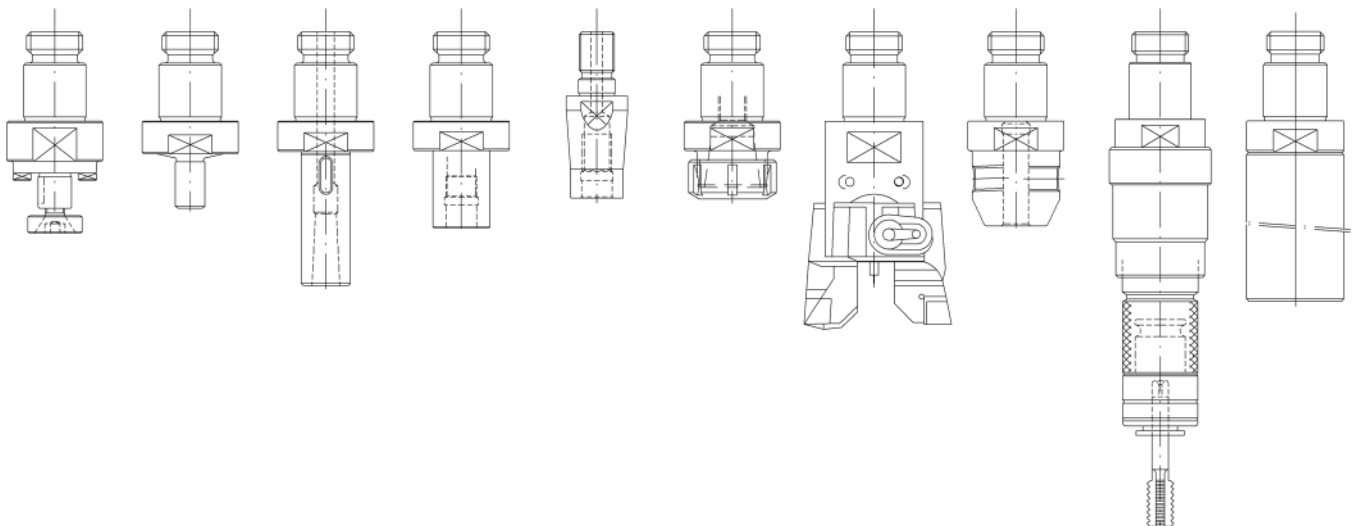


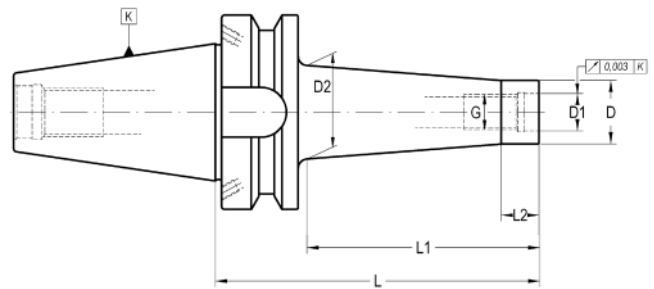
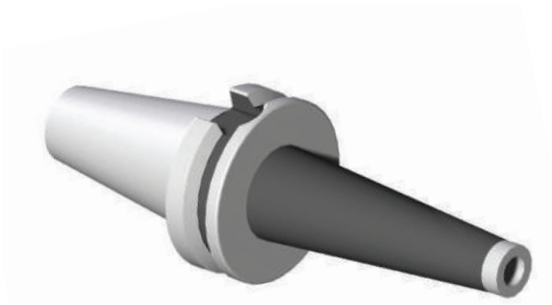
K	K1	L	D	G	COD. Form AD	Availability 库存状况			
40	30	60	50	M-12	003 12 32 02 01 02	■	003 99 08 02 01	304 01 00 04 00	301 01 03 05 08
40	40	87	68	M-16	003 12 32 02 02 02	■	003 99 08 02 02	304 01 00 04 00	301 01 03 05 08
50	40	63	70	M-16	003 12 32 04 02 02	■	003 99 08 04 02	304 01 00 04 00	301 01 03 05 12



K	D1	D	L	L1	D2	COD. Form AD	Availability 库存状况	COD. Form AD + B	Availability 库存状况
30	13	18,5	70	48	21,5	003 12 54 01 12	□	-	-
30	26	36	70	48	39	003 12 54 01 15	■	-	-
30	30	46	63	41	-	003 12 54 01 06	■	-	-
40	10,5	14,5	100	73	18,5	003 12 54 02 11	□	-	-
40	13	18,5	100	73	22,5	003 12 54 02 12	■	-	-
40	16	23	100	73	27	003 12 54 02 13	■	-	-
40	20	29	100	73	33	003 12 54 02 14	■	-	-
40	26	36	100	73	40	003 12 54 02 15	■	-	-
40	30	46	55	28	-	003 12 54 02 06	■	003 32 54 02 06	■
40	46	63	100	73	-	003 12 54 02 07	■	003 32 54 02 07	■
45	30	46	63	30	-	003 12 54 03 06	□	-	-
45	46	63	63	30	-	-	-	003 32 54 03 07	□
50	10,5	14,5	135	97	20	003 12 54 04 11	□	-	-
50	13	18,5	135	97	24	003 12 54 04 12	■	-	-
50	16	23	135	97	28,5	003 12 54 04 13	■	-	-
50	20	29	135	97	34,5	003 12 54 04 14	■	-	-
50	26	36	135	97	41,5	003 12 54 04 15	■	-	-
50	30	46	63	25	-	003 12 54 04 06	■	003 32 54 04 06	■
50	46	63	63	25	-	003 12 54 04 07	■	003 32 54 04 07	■
50	46	90	63	25	-	003 12 54 04 08	■	003 32 54 04 08	■

Page: 207





K	G	D	D1	D2	L	L1	L2	COD. Form AD + B	Availability 库存状况
40	M-6	9,8	6,5	12	55	25	10	003 32 57 12 01	■
40	M-6	9,8	6,5	20	105	75	10	003 32 57 32 01	■
40	M-8	12,8	8,5	16	55	25	10	003 32 57 12 02	■
40	M-8	12,8	8,5	24	105	75	10	003 32 57 32 02	■
40	M-8	12,8	8,5	26	130	100	10	003 32 57 42 02	■
40	M-10	17,8	10,5	20	55	25	10	003 32 57 12 03	■
40	M-10	17,8	10,5	28	105	75	10	003 32 57 32 03	■
40	M-10	17,8	10,5	32	130	100	10	003 32 57 42 03	■
40	M-12	20,8	12,5	24	55	25	10	003 32 57 12 04	■
40	M-12	20,8	12,5	32	105	75	10	003 32 57 32 04	■
40	M-12	20,8	12,5	36	130	100	10	003 32 57 42 04	■
40	M-16	28,8	17	30	55	25	10	003 32 57 12 05	■
40	M-16	28,8	17	38	105	75	10	003 32 57 32 05	■
40	M-16	28,8	17	42	130	100	10	003 32 57 42 05	■
50	M-8	12,8	8,5	20	95	50	10	003 32 57 24 02	■
50	M-8	12,8	8,5	28	145	100	10	003 32 57 44 02	■
50	M-8	12,8	8,5	36	195	150	10	003 32 57 64 02	■
50	M-10	17,8	10,5	24	95	50	10	003 32 57 24 03	■
50	M-10	17,8	10,5	32	145	100	10	003 32 57 44 03	■
50	M-10	17,8	10,5	40	195	150	10	003 32 57 64 03	■
50	M-12	20,8	12,5	24	95	50	10	003 32 57 24 04	■
50	M-12	20,8	12,5	43	145	100	10	003 32 57 44 04	■
50	M-12	20,8	12,5	44	195	150	10	003 32 57 64 04	■
50	M-16	28,8	17	32	95	50	10	003 32 57 24 05	■
50	M-16	28,8	17	42	145	100	10	003 32 57 44 05	■
50	M-16	28,8	17	52	195	150	10	003 32 57 64 05	■

- K40 Balanced according to ISO 1940-1 up to 15.000 r.p.m.
- We have latest methods for dynamic balancing up to 50.000 r.p.m.

— 根据ISO 1940-1 动平衡标准, K40 可达转速一万五千
— 我们的最新技术可将动平衡调整至高达转速五万

RELATIONATED ELEMENTS

相关配件



003 57 57 ...

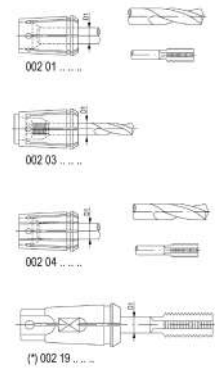
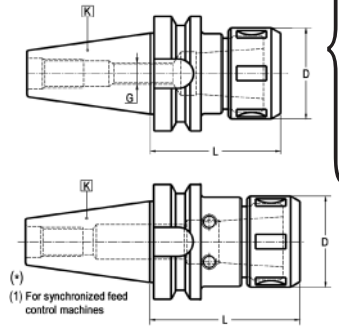
COLLET CHUCKS FOR DIN 6388 COLLETS

DIN 6388 型 筒夹刀柄



004 12/32 .1 ...

For tools with cylindrical straight shank DIN 1835-A or threaded cylindrical shank DIN 1835-D.
适用于DIN 1835-A 型滑面直柄刀具或DIN 1835-D 型螺纹柄刀具



(*) (1) 适用于刚性控制机床

K	D1 máx.	L	D	G	COD. Form AD	Availability 库存状况	COD. Form AD + B
*30	16	73	43	-	004 12 51 01 03	<input type="checkbox"/>	-
30	25	80	60	M-12	004 12 01 01 05	<input type="checkbox"/>	-
*40	16	78	43	-	004 12 51 02 03	<input type="checkbox"/>	-
*40	20	83	50	-	004 12 51 02 04	<input type="checkbox"/>	-
*50	20	100	50	-	004 12 51 04 04	<input type="checkbox"/>	-
50	25	100	60	M-16	004 12 01 04 05	<input type="checkbox"/>	004 32 01 04 05 <input type="checkbox"/>
50	32	100	72	M-16	004 12 01 04 06	<input type="checkbox"/>	-
50	40	100	85	M-16	004 12 01 04 07	<input type="checkbox"/>	-

- Circular deviation between outer taper and collet housing $\leq 0,003$
- Provided with bearing nut.
- K 30/40: Balanced according to ISO 1940-1 up to 10.000 r.p.m.

— 外锥头与筒夹外壳之间的圆度偏差 ≤ 0.003
— 出货包含轴承螺母
— K 30/40：根据ISO 1940-1 动平衡标准可达转速一万

RELATIONATED ELEMENTS Page: 255

相关配件



ACCESSORIES INCLUDED: Bearing nut

出货包含：轴承螺母



D1max	Part Number
16	004 99 01 02 03
20	004 99 01 02 04
25	004 99 01 02 05
32	004 99 01 02 06
40	004 99 01 02 07

OPTIONAL ACCESSORIES

选购配件



004 99 04 09 08
004 99 04 09 09
004 99 04 09 11
004 99 04 09 12
004 99 04 09 13



301 99 02 ...

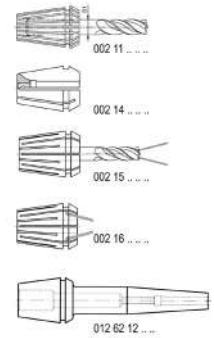
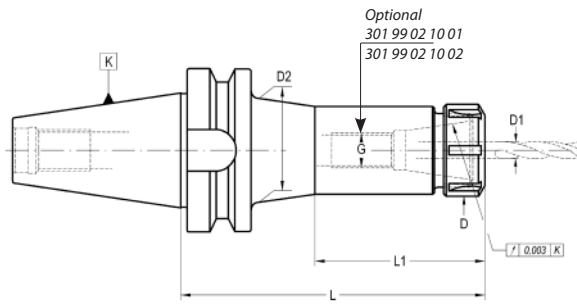
COLLET CHUCKS ER TYPE (DIN 6499)

高速刀柄



004 12/32 06 ...

For tools with cylindrical straight shank DIN 1835-A.
适用于 DIN 1835-A 型滑面直柄刀具



K	ER	D1	L	D	G	D2	L1	COD. Form AD	Availability 库存状况	COD. Form AD + B	Availability 库存状况
30	16	0,5 - 10	55	28	M-10	-	-	004 12 06 01 03	■	-	-
30	16	0,5 - 10	100	28	M-10	-	-	004 12 06 01 13	■	-	-
30	25	1- 16	55	42	M-12	-	-	004 12 06 01 05	■	-	-
30	25	1- 16	100	42	M-12	-	-	004 12 06 01 15	■	-	-
30	32	2- 20	60	50	M-12	-	-	004 12 06 01 06	■	-	-
30	32	2- 20	100	50	M-12	-	-	004 12 06 01 16	■	-	-
40	16	0,5 - 10	70	28	M-10	-	-	004 12 06 02 03	■	004 32 06 02 03	■
40	16	0,5 - 10	100	28	M-10	-	-	004 12 06 02 13	■	004 32 06 02 13	■
40	16	0,5 - 10	160	28	M-10	40	85	004 12 06 02 33	■	004 32 06 02 33	■
40	25	1- 16	70	42	M-16	-	-	004 12 06 02 05	■	004 32 06 02 05	■
40	25	1- 16	100	42	M-16	-	-	004 12 06 02 15	■	-	-
40	25	1- 16	150	42	M-16	-	-	-	-	004 32 06 02 25	■
40	32	2- 20	70	50	M-16	-	-	004 12 06 02 06	■	004 32 06 02 06	■
40	32	2- 20	100	50	M-16	-	-	004 12 06 02 16	■	-	-
40	32	2- 20	150	50	M-16	-	-	004 12 06 02 26	■	-	-
40	40	3- 26	70	63	M-16	-	-	004 12 06 02 07	■	004 32 06 02 07	■
40	40	3- 26	100	63	M-16	-	-	004 12 06 02 17	■	004 32 06 02 17	■
50	16	0,5 - 10	100	28	M-10	-	-	004 12 06 04 13	■	004 32 06 04 13	■
50	16	0,5 - 10	200	28	M-10	40	95	004 12 06 04 43	■	004 32 06 04 43	■
50	32	2- 20	100	50	M-16	-	-	004 12 06 04 06	■	004 32 06 04 06	■
50	32	2- 20	150	50	M-16	-	-	004 12 06 04 26	■	-	-
50	32	2- 20	200	50	M-16	-	-	004 12 06 04 46	■	-	-
50	40	3- 26	100	63	M-16	-	-	004 12 06 04 07	■	004 32 06 04 07	■
50	40	3- 26	150	63	M-16	-	-	004 12 06 04 27	■	-	-
50	40	3- 26	200	63	M-16	-	-	004 12 06 04 47	■	-	-
50	50	6- 34	100	78	M-16	-	-	004 12 06 04 08	■	004 32 06 04 08	■
50	50	6- 34	150	78	M-16	-	-	004 12 06 04 28	■	-	-

RELATED ELEMENTS Page: 254
相关配件



CHUCK BODY BALANCED TO:		刀柄本体平衡等级:	
BT 30	BT 40	BT 50	
G 2,5 25.000 rpm	G 2,5 25.000 rpm	G 2,5 20.000 rpm	

ACCESSORIES INCLUDED
出货包含配件

Conventional 标准螺帽	Bearing shell nut 轴承滚珠螺帽	Notch free 无风阻螺帽	Mini 迷你型螺帽
ER 16 004 99 01 08 03	ER 16 004 99 01 04 03	ER 16 004 99 01 10 03	ER mini 8 004 99 01 06 01
ER 25 004 99 01 03 05	ER 25 004 99 01 04 05	ER 25 004 99 01 10 05	ER mini 11 004 99 01 06 02
ER 32 004 99 01 03 06	ER 32 004 99 01 04 06	ER 32 004 99 01 10 06	ER mini 16 004 99 01 06 03
ER 40 004 99 01 03 07	ER 40 004 99 01 04 07	ER 40 004 99 01 10 07	
ER 50 004 99 01 03 08	ER 50 004 99 01 04 08		

OPTIONAL ACCESSORIES
选购配件

ER mini 迷你型螺帽 8 004 99 04 05 01	ER 16 004 99 04 06 25	004 99 04 07 30
ER mini 迷你型螺帽 11 004 99 04 05 02	ER 16 004 99 04 06 25	004 99 04 07 30
ER mini 迷你型螺帽 16 004 99 04 05 03	ER 16 004 99 04 06 25	004 99 04 07 30
ER 25 004 99 04 03 05	ER 32 004 99 04 03 06	004 99 04 07 40
ER 32 004 99 04 03 06		004 99 04 07 50

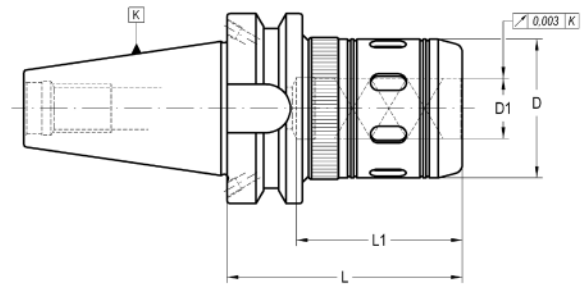
GREAT POWER COLLET CHUCKS -SLIM LINE-

强力夹持-超薄型

004 32 15 ...



For tools with cylindrical straight shank.
适用于直柄刀具



K	D1	L	D	L1	COD. Form AD + B	Availability 库存状况	
40	20	80	46	60	004 32 15 02 04	■	004 99 04 02 06
40	20	105	46	60	004 32 15 02 14	■	004 99 04 02 06
40	32	85	62	75	004 32 15 02 06	■	004 99 04 02 06
40	32	105	62	80	004 32 15 02 16	■	004 99 04 02 06
50	20	100	46	60	004 32 15 04 04	■	004 99 04 02 06
50	32	100	62	80	004 32 15 04 06	■	004 99 04 02 06
50	32	135	62	80	004 32 15 04 26	■	004 99 04 02 06

- For an optimum performance of the chuck it is highly recommended to use h6 cylindrical tools.
- For tools with nominal \varnothing equal to "D1" the collet is not needed.

— 为使筒夹达到最高效能，我们强烈建议您搭配h6精度的直柄刀具
— 如刀具直径与 D1 相同则不需要使用筒夹

CHUCK BODY BALANCED TO

刀柄本体平衡等级：

BT 40	BT 50
G 2,5 25.000 rpm	G 2,5 20.000 rpm

Page: 317

Use recommendations
使用相关注意事项

RELATIONATED ELEMENTS 相关配件

Page: 317/261



001 50 02 ... 012 50 09 ... 003 50 12 ... 004 50 06 ...



002 05 ... 002 09 ... 002 05 2 ...



ACCESSORIES INCLUDED 出货包含配件

Conventional
标准螺帽

Notch free nut
无风阻螺帽



D1
20 351 04 00 14 07
32 351 04 00 14 07

D1
20 351 04 00 34 07
32 351 04 00 34 07

OPTIONAL ACCESSORIES 选购配件

Wrench for conventional nut
常规螺母用扳手

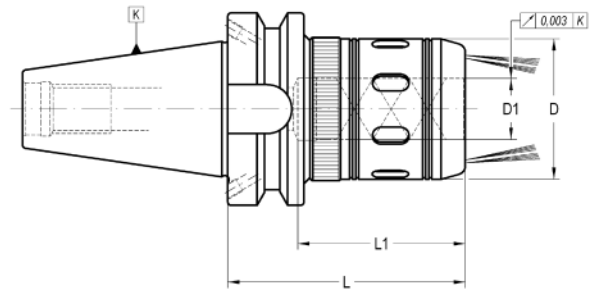
Wrench for not free nut
滑面螺母用扳手



D1
20 004 99 04 09 09
32 004 99 04 09 11

004 99 04 07 46
004 99 04 07 62

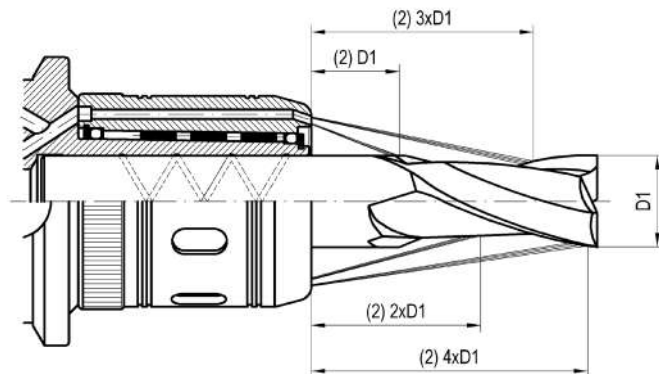
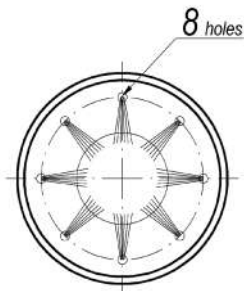
For tools with plain cylindrical straight shank.
适用于滑面直柄刀具



K	D1	L	D	L1	COD. Form AD + B	Availability 库存状况	
40	20	80	46	60	004 32 25 02 04	<input type="checkbox"/>	004 99 04 02 06
40	32	85	62	75	004 32 25 02 06	<input type="checkbox"/>	004 99 04 02 06
50	32	100	62	80	004 32 25 04 06	<input type="checkbox"/>	004 99 04 02 06

- For an optimum performance of the chuck it is highly recommended to use h6 cylindrical tools.
- For tools with nominal \varnothing equal to "D1" the collet is not needed.

— 为使筒夹达到最高效能，我们强烈建议您搭配h6精度的直柄刀具
— 如刀具直径与 D1 相同则不需要使用筒夹



CHUCK BODY BALANCED TO 刀柄本体平衡等级:	
BT 40	BT 50
G 2,5 25.000 rpm	G 2,5 20.000 rpm

Page: 317
Use recommendations
使用相关注意事项

OPTIONAL ACCESSORIES
选购配件



D1	
20	004 99 04 09 09
32	004 99 04 09 11

HIGH POWER COLLET CHUCKS - HPTC -

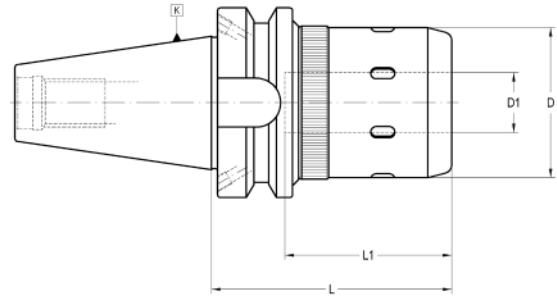
强力夹持-加强型



004 32 55 ...

For tools with cylindrical straight shank.
适用于直柄刀具

NEW!



K	D1 max.	L	D	L1	COD. Form AD+ B	Availability 库存状况	
* 30	16	65	40	50	004 12 55 01 03	■	004 99 04 02 06
* 30	20	80	50	60	004 12 55 01 04	■	004 99 04 02 06
40	16	75	40	50	004 32 55 02 03	■	004 99 04 02 06
40	16	100	40	50	004 32 55 02 13	■	004 99 04 02 06
40	20	80	50	60	004 32 55 02 04	■	004 99 04 02 06
40	20	105	50	60	004 32 55 02 14	■	004 99 04 02 06
40	20	120	50	60	004 32 55 02 24	■	004 99 04 02 06
40	25	90	62	70	004 32 55 02 05	■	004 99 04 02 06
40	25	120	62	70	004 32 55 02 15	■	004 99 04 02 06
50	16	105	40	50	004 32 55 04 03	■	004 99 04 02 06
50	16	135	40	50	004 32 55 04 13	■	004 99 04 02 06
50	20	100	50	60	004 32 55 04 04	■	004 99 04 02 06
50	20	135	50	60	004 32 55 04 14	■	004 99 04 02 06
50	25	135	62	70	004 32 55 04 25	■	004 99 04 02 06
** 50	40	115	85	90	004 52 55 04 07	■	004 99 04 02 06
** 50	50	115	99	90	004 52 55 04 09	■	004 99 04 02 06

* AD Form

** Available in Double Contact / Disponible en Doble Contacto

CHUCK BODY BALANCED TO: 刀柄本体平衡等级:	
BT 30	BT 40
G 2,5 30.000 rpm	G 2,5 25.000 rpm

Page: 317

Use recommendations
使用相关注意事项

RELATIONATED ELEMENTS

Page: 239/261

相关配件



OPTIONAL ACCESSORIES

选购配件



D1	
16	004 99 04 09 08
20	004 99 04 09 09
25	004 99 04 09 11
32	004 99 04 09 11
40	004 99 04 09 13
50	004 99 04 09 14

- For an optimum performance of the chuck it is highly recommended to use h6 cylindrical tools.
- For tools with nominal \varnothing equal to "D1" the collet is not needed.
- Other sizes please contact.

- 为使筒夹达到最高效能，我们强烈建议您搭配h6精度的直柄刀具
- 如刀具直径与 D1 相同则不需要使用筒夹
- 如需其他尺寸请洽询

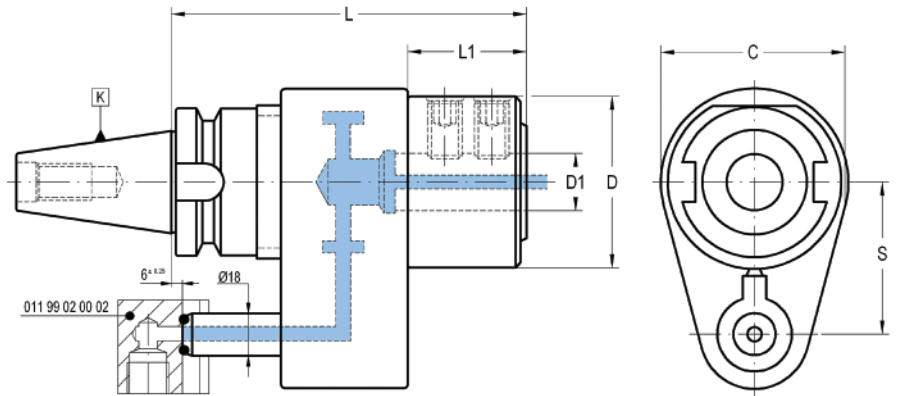
ROTATORY COOLANT ADAPTERS

外转内冷刀柄

011 12 03 ...



For tools with cylindrical straight shank with locking surface.
适用于直柄带夹持接头的工具



规格
最大 RPM
最大容许冷却剂压力
最低运转中压力

SPECIFICATIONS	
Max. RPM	6.000 rpm
Max. coolant pressure presión admisible	20 bar
Min. operating pressure presión de funcionamiento	2 bar

K	D1	D	L	L1	S	C	COD. Form A	Availability 库存状况	
40	25	50	153	48	65	80	011 12 03 02 25	<input type="checkbox"/>	301 01 08 16 15
40	32	73	153	48	65	80	011 12 03 02 32	<input checked="" type="checkbox"/>	301 01 08 16 20
50	40	88	165	50	80	100	011 12 03 04 40	<input checked="" type="checkbox"/>	301 01 08 16 30

选购配件



011 99 02 00 02

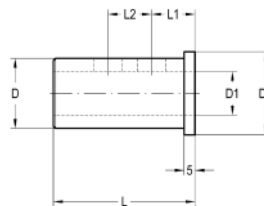


011 99 03 ...

REDUCING ADAPTERS

减径壳

011 99 03 ...



D	D1	D2	L	L1	L2	COD.	Availability 库存状况
25	16	33	55	20	0	011 99 03 03 01	<input type="checkbox"/>
25	20	33	55	20	0	011 99 03 03 02	<input type="checkbox"/>
32	16	38	60	20	0	011 99 03 04 01	<input checked="" type="checkbox"/>
32	20	38	60	20	0	011 99 03 04 02	<input checked="" type="checkbox"/>
32	25	38	60	20	20	011 99 03 04 03	<input checked="" type="checkbox"/>
40	16	48	65	20	0	011 99 03 05 01	<input checked="" type="checkbox"/>
40	20	48	65	20	0	011 99 03 05 02	<input checked="" type="checkbox"/>
40	25	48	65	20	25	011 99 03 05 03	<input checked="" type="checkbox"/>
40	32	48	65	20	25	011 99 03 05 04	<input checked="" type="checkbox"/>

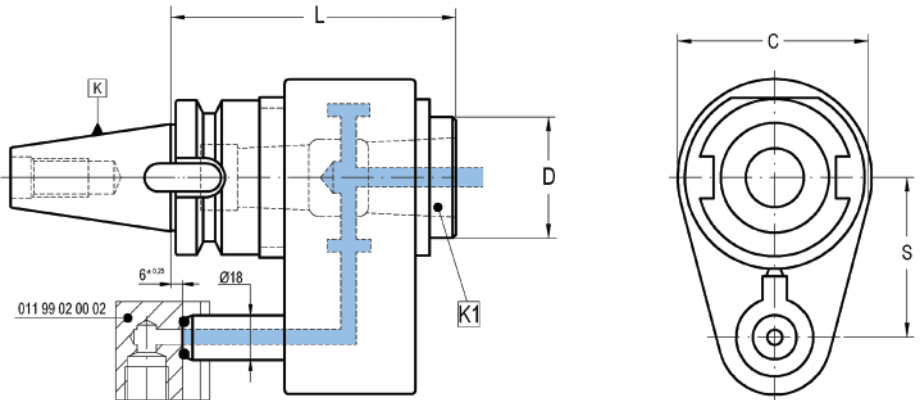
ROTATORY COOLANT ADAPTERS

外转内冷刀柄

011 12 11 ...



For tapered Morse taper tools DIN 228-BK.
适用于莫氏 DIN 228-BK 型锥头工具



规格
最大 RPM
最大容许冷却剂压力
最低运转中压力

SPECIFICATIONS	
Max. RPM	6.000 rpm
Max. coolant pressure presión admisible	20 bar
Min. operating pressure presión de funcionamiento	2 bar

K	K1	D	L	S	C	COD. Form A	Availability 库存状况
40	4	50	120	65	80	011 12 11 02 50	<input type="checkbox"/>

OPTIONAL ACCESSORIES

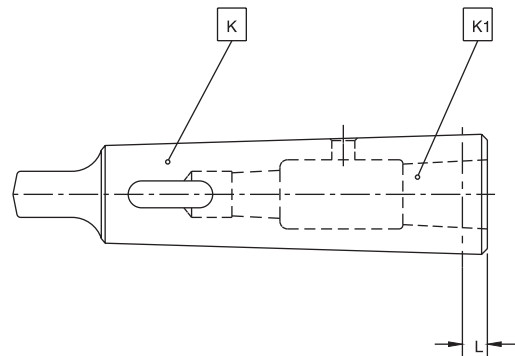


011 99 02 00 02 011 99 05 ...

REDUCING ADAPTERS

减径壳

011 99 05 ...



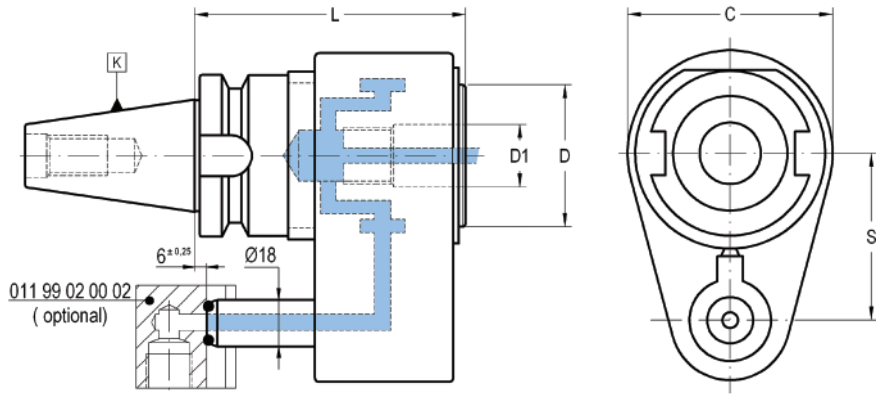
K	K1	L	COD.	Availability 库存状况
4	1	6,5	011 99 05 05 20	<input type="checkbox"/>
4	2	6,5	011 99 05 05 30	<input type="checkbox"/>
4	3	22,5	011 99 05 05 40	<input type="checkbox"/>

ROTATORY COOLANT ADAPTERS

外转内冷刀柄



011 12 54 ...

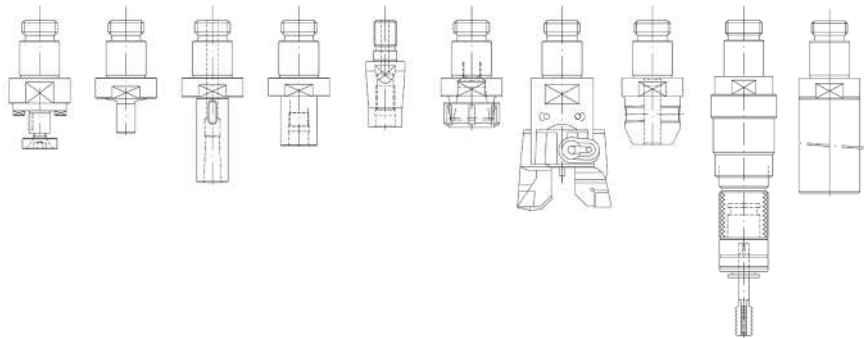


K	D1	D	L	S	C	COD. Form A	Availability 库存状况
40	30	46	110	65	80	011 12 54 02 06	■
50	46	63	120	80	100	011 12 54 04 07	■

OPTIONAL ACCESSORIES 选购配件



011 99 02 00 02

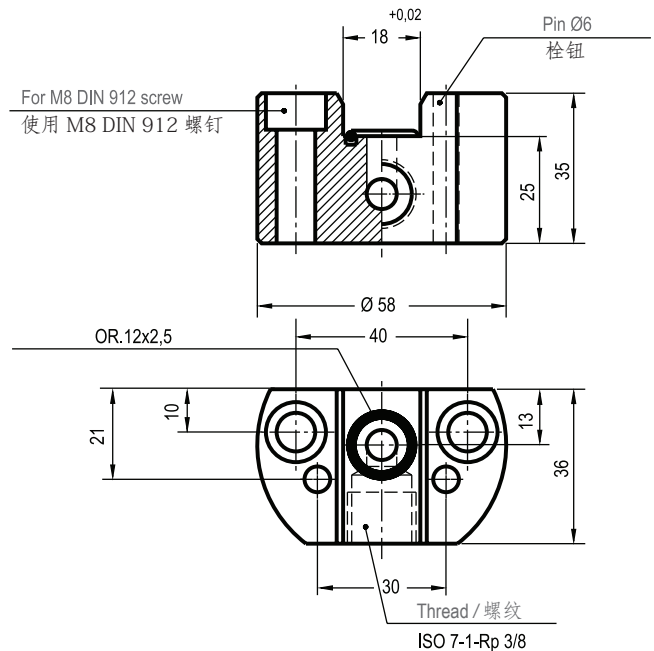


REDUCING ADAPTERS

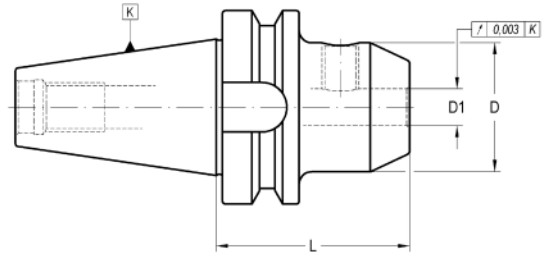
连接器





011 99 02 00 02



For end mills with shank DIN 1835-B - DIN 6535 HB.
适用于DIN 1835-B DIN 6335 HB 型直柄立铣刀



K	D1	L	D	COD. Form AD	Availability 库存状况	COD. Form AD + B	Availability 库存状况	
40	6	50	25	012 12 01 12 06	■	-	-	301 01 05 06 10
40	6	120	25	-	-	012 32 01 22 06	■	301 01 05 06 10
40	8	50	28	012 12 01 12 08	■	-	-	301 01 05 08 10
40	8	120	28	-	-	012 32 01 22 08	■	301 01 05 08 10
40	10	63	35	012 12 01 12 10	■	-	-	301 01 05 10 12
40	10	120	35	-	-	012 32 01 22 10	■	301 01 05 10 12
40	12	63	42	012 12 01 12 12	■	-	-	301 01 05 12 16
40	12	120	42	-	-	012 32 01 22 12	■	301 01 05 12 16
40	14	63	44	012 12 01 12 14	■	-	-	301 01 05 12 16
40	14	120	44	-	-	012 32 01 22 14	■	301 01 05 12 16
40	16	63	48	012 12 01 12 16	■	-	-	301 01 05 14 16
40	16	120	48	-	-	012 32 01 22 16	■	301 01 05 14 16
40	18	63	50	012 12 01 12 18	■	-	-	301 01 05 14 16
40	18	120	50	-	-	012 32 01 22 18	■	301 01 05 14 16
40	20	63	52	012 12 01 12 20	■	-	-	301 01 05 16 16
40	20	120	52	-	-	012 32 01 22 20	■	301 01 05 16 16
40	25	95	65	012 12 01 12 25	■	-	-	301 01 05 18 20
40	25	160	65	-	-	012 32 01 32 25	■	301 01 05 18 20
40	32	100	70	012 12 01 12 32	■	-	-	301 01 05 20 20
40	32	160	72	-	-	012 32 01 32 32	■	301 01 05 20 20
40	40	110	80	-	-	012 32 01 12 40	■	301 01 05 20 20
40	40	160	80	-	-	012 32 01 32 40	■	301 01 05 20 20
50	6	63	25	012 12 01 14 06	■	-	-	301 01 05 06 10
50	6	120	25	-	-	012 32 01 24 06	■	301 01 05 06 10
50	8	63	28	012 12 01 14 08	■	-	-	301 01 05 08 10
50	8	120	28	-	-	012 32 01 24 08	■	301 01 05 08 10
50	10	65	35	012 12 01 14 10	■	-	-	301 01 05 10 12
50	10	120	35	-	-	012 32 01 24 10	■	301 01 05 10 12
50	12	80	42	012 12 01 14 12	■	-	-	301 01 05 12 16
50	12	120	42	-	-	012 32 01 24 12	■	301 01 05 12 16
50	14	80	44	012 12 01 14 14	■	-	-	301 01 05 12 16
50	14	120	44	-	-	012 32 01 24 14	■	301 01 05 12 16
50	16	80	48	012 12 01 14 16	■	-	-	301 01 05 14 16
50	16	120	48	-	-	012 32 01 24 16	■	301 01 05 14 16
50	18	80	50	012 12 01 14 18	■	-	-	301 01 05 14 16
50	18	120	50	-	-	012 32 01 24 18	■	301 01 05 14 16
50	20	80	52	012 12 01 14 20	■	-	-	301 01 05 16 16
50	20	120	52	-	-	012 32 01 24 20	-	301 01 05 16 16

K	D1	L	D	COD. Form AD	Availability 库存状况	COD. Form AD + B	Availability 库存状况	
50	25	100	65	012 12 01 14 25	■	-	-	301 01 05 18 20
50	25	160	65	-	-	012 32 01 34 25	■	301 01 05 18 20
50	32	105	72	012 12 01 14 32	■	-	-	301 01 05 20 20
50	32	160	72	-	-	012 32 01 34 32	-	301 01 05 20 20
50	40	105	80	-	-	012 32 01 14 40	-	301 01 05 20 20
50	40	160	80	-	-	012 32 01 34 40	-	301 01 05 20 20
50	50	125	98	-	-	012 32 01 14 50	-	301 01 05 24 25
50	50	200	98	-	-	012 32 01 44 50	-	301 01 05 24 25

- D1 ≥ 25 mm: two clamping holes.

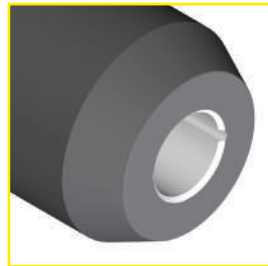
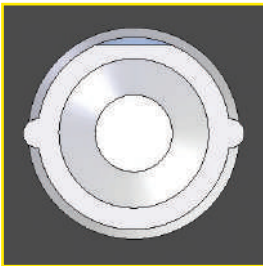
— D1 ≥ 25mm: 有两个刀具夹持孔

- Balanced according to ISO 1940-1 up to 10.000 r.p.m.

— 根据ISO 1940-1 动平衡标准可达转速一万

- We have latest methods for dynamic balancing up to 50.000 r.p.m.

— 我们的最新技术可将动平衡调整至高达转速五万



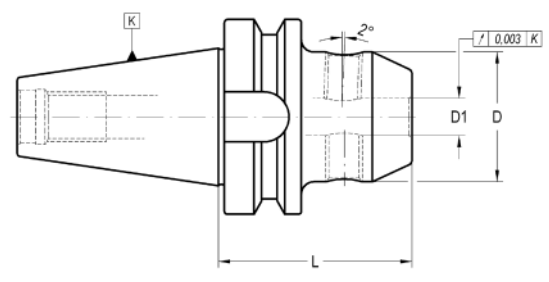
OPTIONAL: On request, supplied with cooling slots.



选购: 如有需要请洽询, 可提供冷却槽

For end mills with shank DIN 1835-B and / or DIN 1835-E.
适用于DIN 1835-B 与DIN 1835-E 型直柄立铣刀

HSK
DIN
69871

BT



K	D1	L	D	COD. Form AD	Availability 库存状况	COD. Form AD + B	Availability 库存状况		
30	6	50	25	012 12 04 11 06	■	-	-	301 02 70 05 01	301 01 05 06 10
30	8	50	28	012 12 04 11 08	■	-	-	301 02 70 06 01	301 01 05 08 10
30	10	50	35	012 12 04 11 10	■	-	-	301 02 70 08 01	301 01 05 10 12
30	12	55	42	012 12 04 11 12	■	-	-	301 02 70 10 01	301 01 05 12 16
30	14	55	44	012 12 04 11 14	■	-	-	301 02 70 12 01	301 01 05 14 16
30	16	63	46	012 12 04 11 16	■	-	-	301 02 70 10 01	301 01 05 12 16
40	6	50	25	-	-	012 32 04 12 06	■	301 02 70 05 01	301 01 05 06 10
40	8	50	28	012 12 04 12 08	□	012 32 04 12 08	■	301 02 70 06 01	301 01 05 08 10
40	10	63	35	012 12 04 12 10	□	012 32 04 12 10	■	301 02 70 08 01	301 01 05 10 12
40	12	63	42	-	-	012 32 04 12 12	■	301 02 70 10 01	301 01 05 12 16
40	14	63	44	-	-	012 32 04 12 14	■	301 02 70 10 01	301 01 05 12 16
40	16	63	48	-	-	012 32 04 12 16	■	301 02 70 12 01	301 01 05 14 16
40	18	63	50	-	-	012 32 04 12 18	■	301 02 70 12 01	301 01 05 14 16
40	20	63	52	-	-	012 32 04 12 20	■	301 02 70 16 01	301 01 05 16 16
40	25	95	65	-	-	012 32 04 12 25	■	301 02 70 20 01	301 01 05 18 20
40	32	100	72	-	-	012 32 04 12 32	■	301 02 70 20 01	301 01 05 20 20
50	6	63	25	-	-	012 32 04 14 06	■	301 02 70 05 01	301 01 05 06 10
50	8	63	28	-	-	012 32 04 14 08	■	301 02 70 06 01	301 01 05 08 10
50	10	65	35	012 12 04 14 10	□	012 32 04 14 10	■	301 02 70 08 01	301 01 05 10 12
50	12	80	42	012 12 04 14 12	□	012 32 04 14 12	■	301 02 70 10 01	301 01 05 12 16
50	14	80	44	-	-	012 32 04 14 14	■	301 02 70 10 01	301 01 05 12 16
50	16	80	48	-	-	012 32 04 14 16	■	301 02 70 12 01	301 01 05 14 16
50	18	80	50	-	-	012 32 04 14 18	■	301 02 70 12 01	301 01 05 14 16
50	20	80	52	-	-	012 32 04 14 20	■	301 02 70 16 01	301 01 05 16 16
50	25	100	65	-	-	012 32 04 14 25	■	301 02 70 20 01	301 01 05 18 20
50	32	105	72	-	-	012 32 04 14 32	■	301 02 70 20 01	301 01 05 20 20

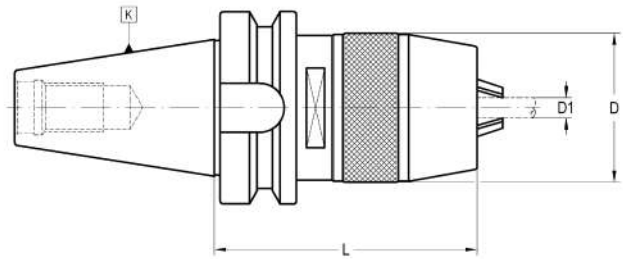
- D1 ≥ 25 mm: two clamping holes.

— D1 ≥ 25 mm: 有两个刀具夹持孔

SHORT DRILL CHUCKS

钻夹头

012 12 09 ...



K	D1	L	D	COD. Form A	Availability 库存状况			
30	0-8	86	38	012 12 09 11 08	■	351 02 60 00 08	351 02 61 00 08	020 99 03 00 08
40	1-13	86	48	012 12 09 12 13	■	351 02 60 01 13	351 02 61 01 13	020 99 03 01 13
40	3-16	103	54	012 12 09 12 16	■	351 02 60 03 16	351 02 61 03 16	020 99 03 03 16
50	3-16	97	54	012 12 09 14 16	■	351 02 60 03 16	351 02 61 03 16	020 99 03 03 16

- Balanced according to ISO 1940-1 up to 8.000 r.p.m.

— 根据ISO 1940-1 动平衡标准可达转速八千

ACCESSORIES INCLUDED

出货包含配件

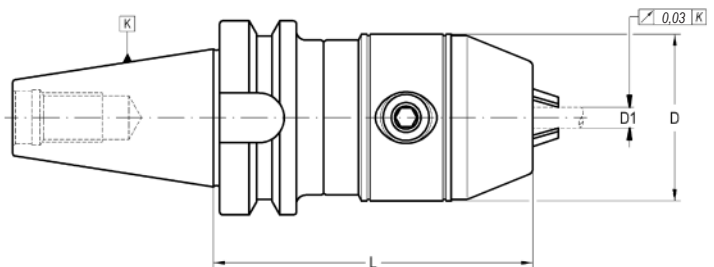


351 02 60 ...

SHORT DRILL CHUCKS - HIGH PRECISION -

高精度钻夹头

012 12/32 19 ...



K	D1	D	L	COD. Form A	Availability 库存状况	COD. Form AD + B	Availability 库存状况
40	1-13	54	96	012 12 19 12 13	■	-	-
40	1-13	54	96	-	-	012 32 19 12 13	■
40	3-16	57	99	012 12 19 12 16	■	-	-
40	3-16	57	99	-	-	012 32 19 12 16	■
50	1-13	54	107	012 12 19 14 13	■	-	-
50	1-13	54	110	-	-	012 32 19 14 13	■
50	3-16	57	107	012 12 19 14 16	■	-	-
50	3-16	57	110	-	-	012 32 19 14 16	■

- Balanced according to ISO 1940-1 up to 8.000 r.p.m.

— 根据ISO 1940-1 动平衡标准可达转速八千

SHRINK FIT CHUCKS -STANDARD-

热胀刀柄

012 12/32 12 ...



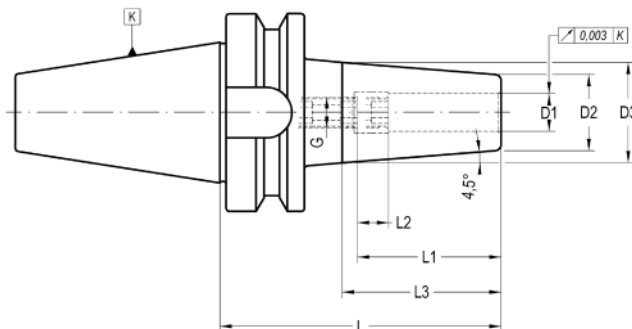
HSK


DIN 69871


BT

Similar to DIN 69882-8

与DIN 69882-B 型相似



K	D1	D2	D3	L1	L2	L3	G	L	COD. Form AD	Availability 库存状况	COD. Form AD + B	Availability 库存状况	
30	3	12	18	-	-	38	-	90	012 12 12 11 03	■	-	-	-
30	4	14	20	-	-	38	-	90	012 12 12 11 04	■	-	-	-
30	5	16	22	-	-	38	-	90	012 12 12 11 05	■	-	-	-
30	6	21	27	36	15	38	M-5	90	012 12 12 11 06	■	-	-	301 02 33 05 02
30	8	21	27	36	10	38	M-6	90	012 12 12 11 08	■	-	-	301 02 33 06 02
30	10	24	32	41	10	51	M-8	90	012 12 12 11 10	■	-	-	301 02 33 08 02
30	12	24	32	46	10	51	M-10	90	012 12 12 11 12	■	-	-	301 02 33 10 02
30	14	27	34	46	10	44,5	M-10	90	012 12 12 11 14	■	-	-	301 02 33 10 02
30	16	27	34	49	10	44,5	M-12	90	012 12 12 11 16	■	-	-	301 02 33 12 02
30	18	33	42	49	10	57	M-12	90	012 12 12 11 18	■	-	-	301 02 33 12 02
30	20	33	42	51	10	57	M-16	90	012 12 12 11 20	■	-	-	301 02 33 16 02
30	25	44	46	57	10	-	M-16	90	012 12 12 11 25	■	-	-	301 02 33 16 02
40	3	12	18	20	-	38	-	90	-	-	012 32 12 12 03	□	-
40	3	12	18	20	-	38	-	120	012 12 12 22 03	□	012 32 12 22 03	■	-
40	4	14	20	20	-	38	-	90	-	-	012 32 12 12 04	■	-
40	4	14	20	20	-	38	-	120	012 12 12 22 04	□	012 32 12 22 04	■	-
40	5	16	22	25	-	38	-	90	-	-	012 32 12 12 05	■	-
40	5	16	22	25	-	38	-	120	012 12 12 22 05	□	012 32 12 22 05	■	-
40	6	21	27	36	10	38	M-5	90	012 12 12 12 06	■	012 32 12 12 06	■	301 02 33 05 02
40	6	21	27	36	10	38	M-5	120	012 12 12 22 06	□	012 32 12 22 06	■	301 02 33 05 02
40	8	21	27	36	10	38	M-6	90	012 12 12 12 08	■	012 32 12 12 08	■	301 02 33 06 02
40	8	21	27	36	10	38	M-6	120	-	-	012 32 12 22 08	■	301 02 33 06 02
40	10	24	32	41	10	51	M-8	90	012 12 12 12 10	■	012 32 12 12 10	■	301 02 33 08 02
40	10	24	32	41	10	51	M-8	120	012 12 12 22 10	□	012 32 12 22 10	■	301 02 33 08 02
40	12	24	32	46	10	51	M-10	90	012 12 12 12 12	■	012 32 12 12 12	■	301 02 33 10 02
40	12	24	32	46	10	51	M-10	120	012 12 12 22 12	□	012 32 12 22 12	■	301 02 33 10 02
40	14	27	34	46	10	44,5	M-10	90	012 12 12 12 14	■	012 32 12 12 14	■	301 02 33 10 02
40	14	27	34	49	10	44,5	M-10	120	012 12 12 22 14	□	012 32 12 22 14	■	301 02 33 10 02
40	16	27	34	49	10	44,5	M-12	90	012 12 12 12 16	■	012 32 12 12 16	■	301 02 33 12 02
40	16	27	34	49	10	44,5	M-12	120	-	-	012 32 12 22 16	■	301 02 33 12 02
40	18	33	42	49	10	57	M-12	90	012 12 12 12 18	■	012 32 12 12 18	■	301 02 33 12 02
40	18	33	42	49	10	57	M-12	120	-	-	012 32 12 22 18	■	301 02 33 12 02
40	20	33	42	51	10	57	M-16	90	012 12 12 12 20	■	012 32 12 12 20	■	301 02 33 16 02
40	20	33	42	51	10	57	M-16	120	-	-	012 32 12 22 20	■	301 02 33 16 02
40	25	44	53	57	10	57	M-16	110	012 12 12 12 25	■	012 32 12 12 25	■	301 02 33 16 02
40	32	44	53	61	10	57	M-16	110	-	-	012 32 12 12 32	■	301 02 33 16 02
50	6	21	27	36	10	38	M-5	100	-	-	012 32 12 14 06	■	301 02 33 05 02
50	6	21	27	36	10	38	M-5	160	-	-	012 32 12 34 06	■	301 02 33 05 02

K	D1	D2	D3	L1	L2	L3	G	L	COD. Form AD + B	Availability 库存状况	
50	8	21	27	36	10	38	M-6	100	012 32 12 14 08	■	301 02 33 06 02
50	8	21	27	36	10	38	M-6	160	012 32 12 34 08	■	301 02 33 06 02
50	10	24	32	41	10	51	M-8	100	012 32 12 14 10	■	301 02 33 08 02
50	10	24	32	41	10	51	M-8	160	012 32 12 34 10	■	301 02 33 08 02
50	12	24	32	46	10	51	M-10	100	012 32 12 14 12	■	301 02 33 10 02
50	12	24	32	46	10	51	M-10	160	012 32 12 34 12	■	301 02 33 10 02
50	14	27	34	46	10	44,5	M-10	100	012 32 12 14 14	■	301 02 33 10 02
50	14	27	34	46	10	44,5	M-10	160	012 32 12 34 14	■	301 02 33 10 02
50	16	27	34	49	10	44,5	M-12	100	012 32 12 14 16	■	301 02 33 12 02
50	16	27	34	49	10	44,5	M-12	160	012 32 12 34 16	■	301 02 33 12 02
50	18	33	42	49	10	44,5	M-12	100	012 32 12 14 18	■	301 02 33 12 02
50	18	33	42	49	10	57	M-12	160	012 32 12 34 18	■	301 02 33 12 02
50	20	33	42	51	10	57	M-16	100	012 32 12 14 20	■	301 02 33 16 02
50	20	33	42	51	10	57	M-16	160	012 32 12 34 20	■	301 02 33 16 02
50	25	44	53	51	10	57	M-16	120	012 32 12 14 25	■	301 02 33 16 02
50	25	44	53	51	10	57	M-16	160	012 32 12 34 25	■	301 02 33 16 02
50	32	44	53	61	10	57	M-16	120	012 32 12 14 32	■	301 02 33 16 02
50	32	44	53	61	10	57	M-16	160	012 32 12 34 32	■	301 02 33 16 02

Characteristics:

- Heat resistant hot working steel.
- Tempered: 54-2 HRC.
- Taper manufactured according DIN-69871.
- Balanced according to ISO-1940-1 to G2,5 at 25.000 r.p.m.

Application:

- Machining where it requires an exceptional high accuracy.
- For a correct function it recommended:

Shank tolerance: h6.

D1 = 3, 4 & 5: Carbide

D1 ≥ 6 mm: Carbide or HSS

Delivery:

- With built-in bored through stop screw.

特色:

- 使用耐热钢打造
- 回火: 54-2 HRC
- 锥头为DIN-69871
- 根据ISO 1940-1 动平衡标准转速二万五千时为 G 2.5

应用:

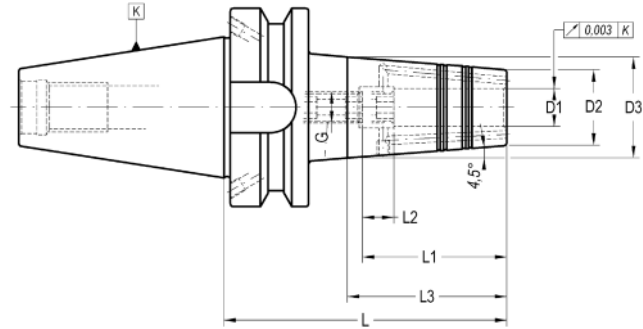
- 装设使用的跳动进度极高
 - 使其正常运作应注意:
- 刀柄等级: h6
D1 = 3, 4 & 5 mm: 碳化钢
D1 ≥ 6 mm: 碳化钢 或 高速钢


配送:

- 内置冷却液槽锁紧螺丝

Similar to DIN 69882-8

与DIN 69882-B 型相似



K	D1	D2	D3	L	L1	L2	L3	G	COD. Form AD + B	Availability 库存状况	
40	6	21	27	90	36	10	38	M-5	012 32 22 12 06	■	301 02 33 05 04
40	8	21	27	90	36	10	38	M-6	012 32 22 12 08	■	301 02 33 06 04
40	10	24	32	90	41	10	51	M-8	012 32 22 12 10	■	301 02 33 08 04
40	12	24	32	90	46	10	51	M-10	012 32 22 12 12	■	301 02 33 10 04
40	14	27	34	90	46	10	44,5	M-10	012 32 22 12 14	■	301 02 33 10 04
40	16	27	34	90	49	10	44,5	M-12	012 32 22 12 16	■	301 02 33 12 04
40	18	33	42	90	49	10	57	M-12	012 32 22 12 18	■	301 02 33 12 04
40	20	33	42	90	51	10	57	M-16	012 32 22 12 20	■	301 02 33 16 04
40	25	44	53	110	57	10	57	M-16	012 32 22 12 25	■	301 02 33 16 04
40	32	44	53	110	61	10	57	M-16	012 32 22 12 32	■	301 02 33 16 04
50	6	21	27	100	36	10	38	M-5	012 32 22 14 06	■	301 02 33 05 04
50	8	21	27	100	36	10	38	M-6	012 32 22 14 08	■	301 02 33 06 04
50	10	24	32	100	41	10	51	M-8	012 32 22 14 10	■	301 02 33 08 04
50	12	24	32	100	46	10	51	M-10	012 32 22 14 12	■	301 02 33 10 04
50	14	27	34	100	46	10	44,5	M-10	012 32 22 14 14	■	301 02 33 10 04
50	16	27	34	100	49	10	44,5	M-12	012 32 22 14 16	■	301 02 33 12 04
50	18	33	42	100	49	10	57	M-12	012 32 22 14 18	■	301 02 33 12 04
50	20	33	42	100	51	10	57	M-16	012 32 22 14 20	■	301 02 33 16 04
50	25	44	53	120	57	10	57	M-16	012 32 22 14 25	■	301 02 33 16 04
50	32	44	53	120	61	10	57	M-16	012 32 22 14 32	■	301 02 33 16 04

Characteristics:

- Heat resistant hot working steel.
- Tempered: 54-2 HRC.
- Taper manufactured according DIN-69871.
- Balanced according to ISO-1940-1 to G2,5 at 25.000 r.p.m.

Application:

- Machining where it requires a exceptional high accuracy.

- For a correct function it recommended:

Shank tolerance: h6.

D1 = 3, 4 & 5: Carbide

D1 ≥ 6 mm: Carbide or HSS

Delivery:

- With built-in bored through stop screw.

特色:

- 使用耐热钢打造
- 回火: 54-2 HRC
- 锥头为DIN-69871 型
- 根据ISO 1940-1 动平衡标准转速二万五千时为 G 2.5

应用:

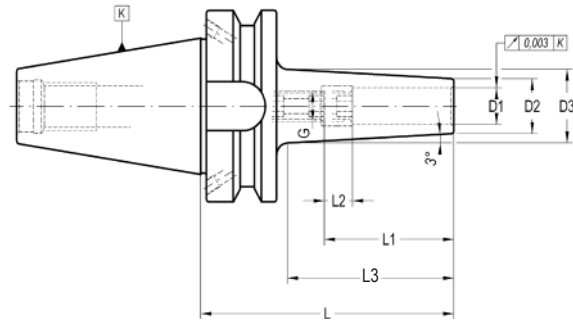
- 装设使用的跳动精度极高
 - 使其正常运作应注意:
- 刀柄等级: h6
D1 = 3, 4 & 5 mm: 碳化钢
D1 ≥ 6 mm: 碳化钢 或 高速钢


配送:

- 内置冷却液槽锁紧螺丝

Similar to DIN 69882-8

与DIN 69882-B 型相似



K	D1	D2	D3	L1	L2	L3	G	L	COD. Form AD + B	Availability 库存状况	
40	3	8	15	20	-	63	-	90	012 32 32 12 03	■	-
40	4	9	16	20	-	63	-	90	012 32 32 12 04	■	-
40	5	10	17	25	-	63	-	90	012 32 32 12 05	■	-
40	6	12	19	36	10	63	M-5	90	012 32 32 12 06	■	301 02 33 05 02
40	8	14	21	36	10	63	M-6	90	012 32 32 12 08	■	301 02 33 06 02
40	10	16	23	41	10	63	M-8	90	012 32 32 12 10	■	301 02 33 08 02
40	12	18	25	46	10	63	M-10	90	012 32 32 12 12	■	301 02 33 10 02

Characteristics:

- Heat resistant hot working steel.
- Tempered: 54-2 HRC.
- Taper manufactured according DIN-69871.
- Balanced according to ISO-1940-1 to G2,5 at 25.000 r.p.m.

Application:

- Machining where it requires a exceptional high accuracy.
- For a correct function it recommended:
- Shank tolerance: h6.
- D1 = 3, 4 & 5: Carbide
- D1 ≥ 6 mm: Carbide or HSS

Delivery:

- With built-in bored through stop screw.

特色:

- 使用耐热钢打造
- 回火: 54-2 HRC
- 锥头为DIN-69871 型
- 根据ISO 1940-1 动平衡标准转速二万五千时为 G 2.5

应用:

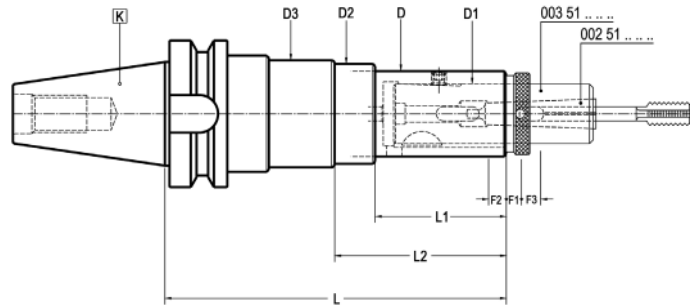
- 装设使用的跳动精度极高
- 使其正常运作应注意:
- 刀柄等级: h6
- D1 = 3, 4 & 5 mm: 碳化钢
- D1 ≥ 6 mm: 碳化钢 或 高速钢

配送:

- 内置冷却液槽锁紧螺丝

Self feed and compression system. Releasing drive system. For axial adjustable adapter DIN 6327.

带轴向与长度补偿及释放驱动系统，适用于DIN 6327 型轴向可调式转换柄



K	CAP.	D1	L	D	L1	D2	L2	D3	F1	F2	F3	COD. Form A	Availability 库存状况
40	M3-M16	25	145	37	61	44	80	49	5	10	10	019 12 51 02 02 12	<input type="checkbox"/>
40	M8-M24	32	186	51	59	60	85	66	6	10	12	019 12 51 02 03 13	<input type="checkbox"/>
50	M3-M16	25	155	37	61	44	80	49	5	10	10	019 12 51 04 02 12	<input type="checkbox"/>
50	M8-M24	32	186	51	59	60	85	66	6	10	12	019 12 51 04 03 13	<input type="checkbox"/>

- Axial compensation (compression and extensions) values are F1 and F2. F3 is the release value (the tap receives only reversing rotation). The release system allows to easily and accurately set up tapping depth, specially adapt for blind holes.

— F1 & F2 为轴向调整（拉伸与延长）数值，F3 为释放值，刀具只会接收到扭转值。释放驱动系统能够简便正确地设定攻丝深度，尤其适合制造盲孔时使用。

Page: 245

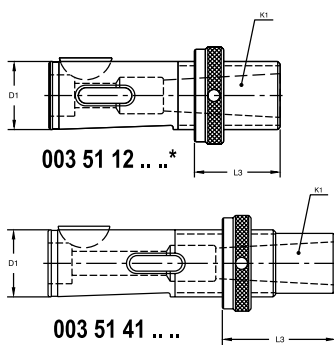
RELATED ELEMENTS

相关配件

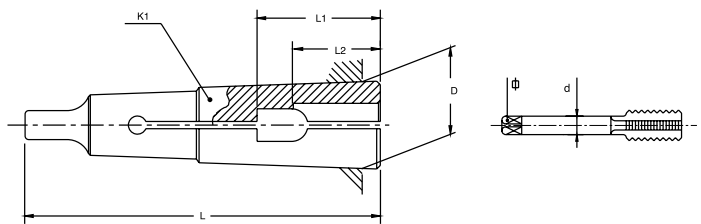


002 51 003 51 41 003 51 12

DIN 6327



DIN 6328



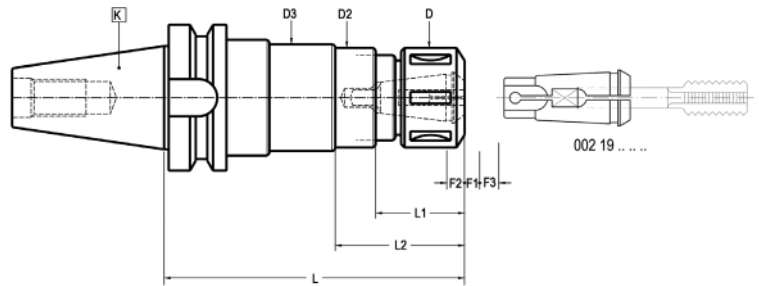
To order: CODE + Diameter $d \times \Phi$ • Example: 002 51 02 - 4 x 3

订购时请写明：产品编号+直径 $d \times$

D ₁	K ₁	L ₃	COD.
25	MORSE 1	12- 42	003 51 12 05 20*
		37- 67	003 51 41 05 21
		62- 92	003 51 41 05 22
		87-117	003 51 41 05 23
		112-142	003 51 41 05 24
	MORSE 2	12- 42	003 51 12 05 30*
		37- 67	003 51 41 05 31
		62- 92	003 51 41 05 32
		87-117	003 51 41 05 33
		112-142	003 51 41 05 34
32	MORSE 2	12- 50	003 51 12 07 30*
		42- 80	003 51 41 07 31
		72-110	003 51 41 07 32
		102-140	003 51 41 07 33
		132-170	003 51 41 07 34
	MORSE 3	12- 50	003 51 12 07 40*
		42- 80	003 51 41 07 41
		72-110	003 51 41 07 42
		102-140	003 51 41 07 43
		132-170	003 51 41 07 44

002 51 02 ...	D	L	d	2,5	2,8	3,15	3,5	3,55	4	4,5	5	5,5	5,6	6	6,3	7	7,1	8	
	12,06	65,5	Φ	2,1	2,1	2,5	2,7	2,8	3	3,4	4	4,3	4,5	4,9	5	5,5	5,6	6,2	
			L ₁	21	25	24	25	26	28	26	28	27	30	32	26	28	26	28	27
L ₂	15	18	16	18	16	19	18	19	19,5	22	19,5	22	19,5	22	19,5	22	19,5		
002 51 03 ...	D	L	d	4,5	5	5,5	5,6	6	6,3	7	7,1	8	9	9,5	10	11	11,2	12	12,5
	17,78	80	Φ	3,4	4	4,3	4,5	4,9	5	5,5	5,6	6,2	7	8	9	10	11	12	12,5
			L ₁	21	25	24	25	26	28	26	28	27	30	32	26	28	26	28	27
L ₂	16	19	18	19	19,5	22	19,5	22	19,5	22	19,5	22	23	24	26	25	26		
002 51 04 ...	D	L	d	8	9	9,5	10	11	11,2	12	12,5	14	16	18					
	23,82	99	Φ	6,2	7	8	9	10	11	12	12,5	14	16	18					
			L ₁	27	30	32	34	36	38	44	48								
L ₂	19,5	22	23	24	26	25	26	30	33										

Self feed and compression system. Releasing drive system. For LAIP 002 19 collet.
带轴向与长度补偿及释放驱动系统，适用于LAIP 002 19 筒夹



K	CAP.	L	D	L1	D2	L2	D3	F1	F2	F3	COD. Form A	Availability 库存状况
40	M3-M16	125	43	39	44	58	49	5	10	10	019 12 51 02 02 22	<input type="checkbox"/>
40	M8-M28	156	50	42	60	68	66	6	10	12	019 12 51 02 03 23	<input type="checkbox"/>
50	M3-M16	135	43	39	44	58	49	5	10	10	019 12 51 04 02 22	<input type="checkbox"/>
50	M8-M28	156	50	42	60	68	66	6	10	12	019 12 51 04 03 23	<input type="checkbox"/>

- Axial compensation (compression and extensions) values are F1 and F2. F3 is the release value (the tap receives only reversing rotation). The release system allows to easily and accurately set up tapping depth, specially adapt for blind holes.

— F1 & F2 为轴向调整（拉伸与延长）数值，F3 为释放值，刀具只会接收到扭转值。释放驱动系统能够简便正确地设定攻丝深度，尤其适合制造盲孔时使用。

ACCESSORIES INCLUDED: Bearing nut
出货包含配件：轴承螺母



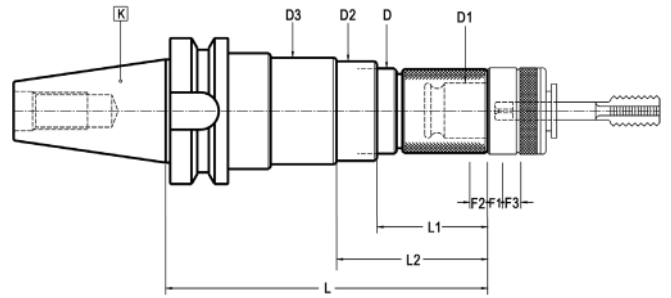
CAP.
M3-M16 004 99 01 02 03
M8-M28 004 99 01 02 04

OPTIONAL ACCESSORIES
选购配件



CAP.
M3-M16 004 99 04 09 08
M8-M28 004 99 04 09 09

Self feed and compression system. Releasing drive system. For BILZ system tap adapter.
带轴向与长度补偿及释放驱动系统，适用于BILZ系统转换刀柄



K	CAP.	D1	L	D	L1	D2	L2	D3	F1	F2	F3	COD. Form A	Availability 库存状况
40	M3-M12 (M16)*	19	128	37	44	44	63	49	5	10	10	019 12 51 02 02 32	<input type="checkbox"/>
40	M8-M20 (M30)*	31	176	51	63	60	89	66	6	10	12	019 12 51 02 03 33	<input type="checkbox"/>
50	M3-M12 (M16)*	19	139	37	44	44	63	49	5	10	10	019 12 51 04 02 32	<input type="checkbox"/>
50	M8-M20 (M30)*	31	178	51	63	60	89	66	6	10	12	019 12 51 04 03 33	<input type="checkbox"/>

- Axial compensation (compression and extensions) values are F1 and F2. F3 is the release value (the tap receives only reversing rotation). The release system allows to easily and accurately set up tapping depth, specially adapt for blind holes.

* With 002 22 y 002 24 adapters.

— F1 & F2 为轴向调整（拉伸与延长）数值，F3 为释放值，刀具只会接收到扭转值。释放驱动系统能够简便正确地设定攻丝深度，尤其适合制造盲孔时使用。

* 与 002 22 及 002 24 系列转换柄搭配使用

RELATIONATED ELEMENTS Page: 262
相关配件



QUICK-CHANGE TAPPING CHUCKS

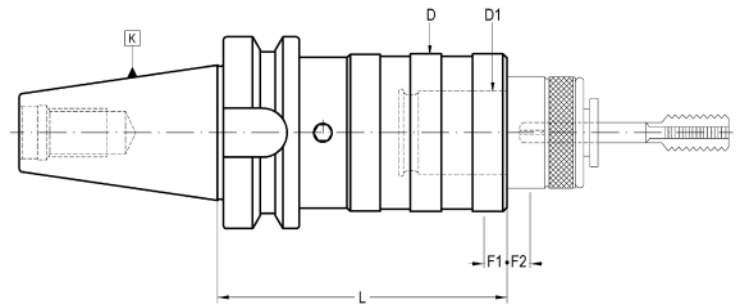
微调快换攻丝刀柄

019 12 52 ...



With self feed and compression system. For BILZ system tap adapter.

带轴向补偿系统，适用于BILZ系统转换刀柄



K	Cap.	D1	L	D	F1	F2	COD. Form A	Availability 库存状况
30	M3-M12 (M16)*	19	65	36	7,5	7,5	019 12 52 01 02	■
40	M3-M12 (M16)*	19	60	36	7,5	7,5	019 12 52 02 02	■
40	M8-M20 (M30)*	31	98	53	12,5	12,5	019 12 52 02 03	■
40	M14-M33 (M48)*	48	153	78	20	20	019 12 52 02 04	■
50	M3-M12 (M16)*	19	90	36	7,5	7,5	019 12 52 04 02	■
50	M8-M20 (M30)*	31	103	53	12,5	12,5	019 12 52 04 03	■
50	M14-M33 (M48)*	48	140	78	20	20	019 12 52 04 04	■

- F1 Compression run.

- F2 Extension run.

* With 002 22 ... and 002 24 ... adapters.

— F1 压缩长度

— F2 拉伸长度

* 与 002 22 ... & 002 24 ... 系列转换柄搭配使用

RELATIONATED ELEMENTS Page: 262

相关配件



002 20 00 ...



002 21 ...



002 22 ...



002 23 ...



002 24 ...

QUICK-CHANGE SOLID DRIVE TAPPING CHUCKS

刚性快换攻丝刀柄

019 12 53 ...

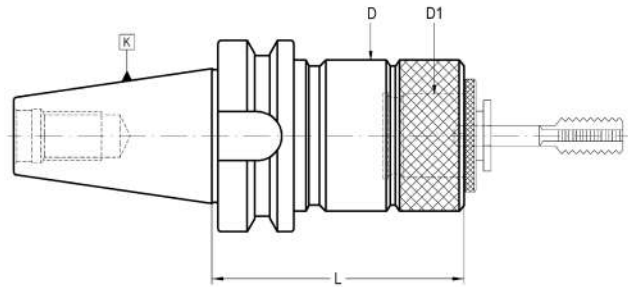


For synchronized feed control machines.
刚性控制攻丝机床专用

HSK

DIN
69871

BT



K	Cap.	D1	L	D2	COD. Form A	Availability 库存状况
30	M3-M12 (M16)*	19	55	32	019 12 53 01 02	□
40	M3-M12 (M16)*	19	65	32	019 12 53 02 02	■
40	M8-M20 (M30)*	31	85	50	019 12 53 02 03	■
50	M3-M12 (M16)*	19	75	32	019 12 53 04 02	■
50	M8-M20 (M30)*	31	95	50	019 12 53 04 03	■
50	M14-M33 (M48)*	48	125	72	019 12 53 04 04	■

* With 002 22 adapters.

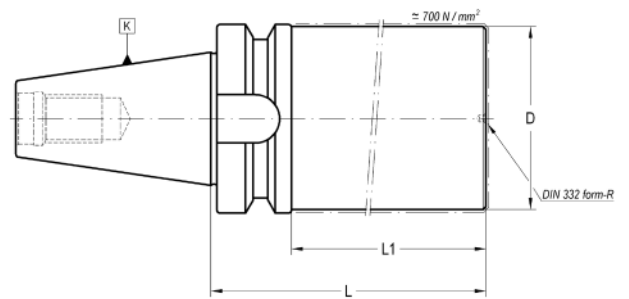
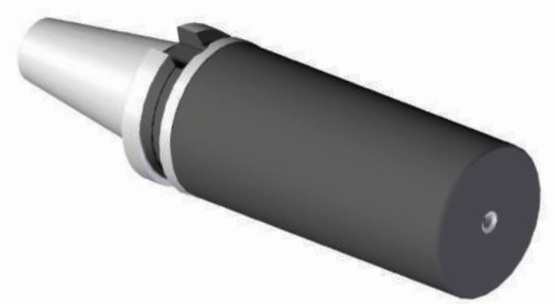
* 与 002 22 系列转换柄搭配使用

RELATIONATED ELEMENTS Page: 262

相关配件



002 20 00 ... 002 21 002 22



K	D	L	L1	COD. Form A	Availability 库存状况
30	45	100	78	020 12 02 01 51	■
40	62	160	133	020 12 02 02 73	■
40	62	250	223	020 12 02 02 75	■
50	90	160	122	020 12 02 04 93	■
50	90	250	212	020 12 02 04 95	■

- The area of diameter D and length L1 has approximately 700N/mm².
 - Rest is hardened to 57 ÷ 60 HRC.
 - Other dimensions on request.

— 直径 D 与长度 L1 部分的抗压强度约为 700N/mm²
 — 其他部分经过强化为洛氏硬度 57 ÷ 60 HRC
 — 如需其他尺寸请咨询