



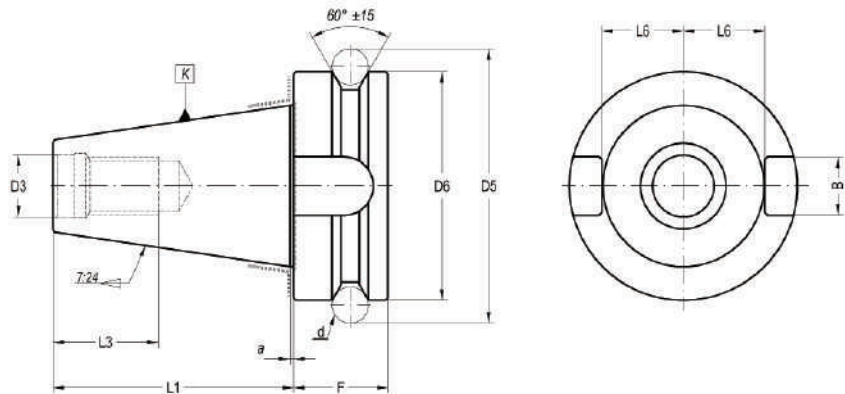
**JIS BT 6339 DUAL CONTACT**



**FORM A**

Without coolant through.

A 型  
无冷却

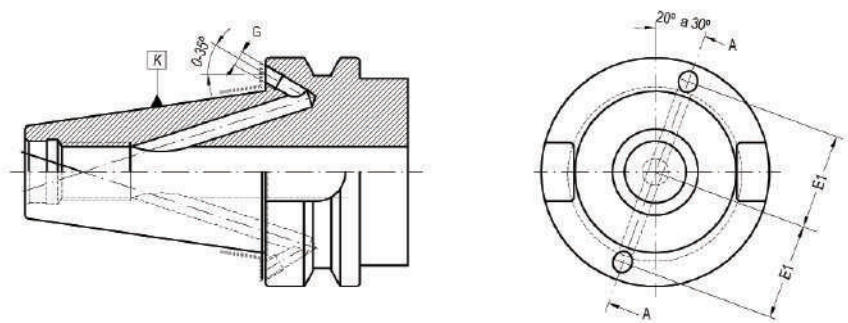


**FORM AD + B**

With central and flange through coolant channels.

Delivery: with two bolts to sealed flange channels.

AD + B 型  
中央与侧边冷却液供应  
配送: 包含两个锁紧侧边供液的螺钉



K	B H12	D1	D2	D3 H8	D5	D6 h8	D9	L1 ± 0,15	L3 min	L6 <sup>+0</sup> / <sub>-0,2</sub>	a <sup>+0</sup> / <sub>-0,005</sub>	d	E1 ± 0,4	F	G
40	16,1	44,45	M-16	17	75,68	63	4	65,4	30	22,6	1	10	27	26	M-4
50	25,7	69,85	M-24	25	119,02	100	6	101,8	45	35,4	1,5	15	42	36,7	M-6

\* BT 30 DUAL CONTACT  
ON DEMAND

\* BT 30 DUAL CONTACT  
NACH ANFRAGE

**Material**

Case-hardening alloy steel.  
Case-hardened and tempered.  
Minium strength in core 880 N/mm<sup>2</sup>  
Surface hardness HRC 57 ÷ 60

**Taper tolerance**

Grade AT3.

**材质**

表面特殊处理过的合金钢  
经过强化与回火  
轴心最低抗压强度为 880 N/mm<sup>2</sup>  
表面强度为洛氏硬度 HRC 57 ÷ 60

锥头标准  
AT3 等级

	SHELL END MILL ARBORS 面铣刀柄	136		HIGH POWER TORQUE CHUCK - HPTC - 强力夹持-加强型	142
	BASIC ADAPTER FOR MODULAR TOOLING 模块化刀柄	137		WELDON HOLDERS 侧固式刀柄	143
	FRONT CONTACT ADAPTERS FOR SCREW IN TOOLS 螺纹连接刀柄	138		SHRINK FIT CHUCKS 热胀刀柄	144
	COLLET CHUCKS ER TYPE (DIN 6499) 高速刀柄	139		ANTIVIBRATION SHRINK FIT CHUCKS - POWER LINE- 热胀刀柄-加强防振型	145
	ZENTRO TYPE CHUCKS 真特罗.零动刀柄	140		ANTIVIBRATION SHRINK FIT CHUCKS - P.L. ELS - 热胀刀柄-加强防振双通道内冷	146
	GREAT POWER COLLET CHUCKS -SLIM LINE- 强力夹持-超薄型	141		TOOLHOLDER BLANKS 毛坯柄	147

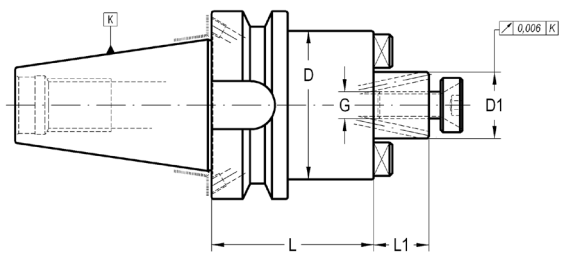
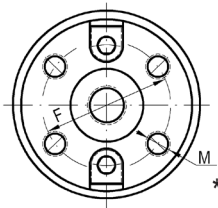
# SHELL END MILL ARBORS

面铣刀柄

001 52 \_3/\_5 ...



For shell end mills with driving slot DIN 138.  
适用于 DIN 138 型驱动槽铣刀



K	D1 h6	L	L1	D	F	M	G	COD. A	Availability Disponibilidad Verfügbarkeit	COD. Form AD + B	Availability Disponibilidad Verfügbarkeit
30	16	50	17	38	-	-	M-8	001 52 35 01 30	■	-	-
30	22	50	19	38	-	-	M-10	001 52 35 01 40	■	-	-
40	16	55	17	38/40	-	-	M-8	-	□	001 52 35 02 30	■
40	16	120	17	38/40	-	-	M-8	-	-	001 52 35 02 31	■
40	16	160	17	38	-	-	M-8	-	-	001 52 35 02 32	■
40	22	55	19	48/50	-	-	M-10	-	□	001 52 35 02 40	■
40	22	120	19	48/50	-	-	M-10	-	-	001 52 35 02 41	■
40	22	160	19	48	-	-	M-10	-	-	001 52 35 02 42	■
40	27	55	21	60	-	-	M-12	-	□	001 52 35 02 50	■
40	27	120	21	60	-	-	M-12	-	-	001 52 35 02 51	■
40	27	160	21	60	-	-	M-12	-	-	001 52 35 02 52	■
40	32	60	24	70	-	-	M-16	001 52 05 02 60	□	001 52 35 02 60	■
40	32	120	24	70	-	-	M-16	-	-	001 52 35 02 61	■
40	32	160	24	70	-	-	M-16	-	-	001 52 35 02 62	■
*40	40	60	27	89	66,7	M-12	M-20	-	-	001 52 33 02 70	■
*40	40	120	27	89	66,7	M-12	M-20	-	-	001 52 33 02 71	■
*40	40	160	27	89	66,7	M-12	M-20	-	-	001 52 33 02 72	■
<b>NEW!</b>	50	16	55	17	38/40	-	M-8	-	□	001 52 35 04 30	■
	50	16	120	17	38/40	-	M-8	-	-	001 52 35 04 31	■
	50	16	160	17	38	-	M-8	-	-	001 52 35 04 32	■
<b>NEW!</b>	50	22	55	19	48/50	-	M-10	-	□	001 52 35 04 40	■
	50	22	120	19	48/50	-	M-10	-	-	001 52 35 04 41	■
	50	22	160	19	48	-	M-10	-	-	001 52 35 04 42	■
<b>NEW!</b>	50	27	55	21	60	-	M-12	-	□	001 52 35 04 50	■
	50	27	120	21	60	-	M-12	-	-	001 52 35 04 51	■
	50	27	160	21	60	-	M-12	-	-	001 52 35 04 52	■
	50	32	55	24	70	-	M-16	-	□	001 52 35 04 60	■
	50	32	120	24	70	-	M-16	-	-	001 52 35 04 61	■
	50	32	160	24	70	-	M-16	-	-	001 52 35 04 62	■
*50	40	55	27	89	66,7	M-12	M-20	-	□	001 52 33 04 70	■
*50	40	120	27	89	66,7	M-12	M-20	-	-	001 52 33 04 71	■
*50	40	160	27	89	66,7	M-12	M-20	-	-	001 52 33 04 72	■
*50	60	70	40	129	101,6	M-16	-	-	□	001 52 33 04 90	■
*50	60	120	40	129	101,6	M-16	-	-	-	001 52 33 04 91	■
*50	60	160	40	129	101,6	M-16	-	-	-	001 52 33 04 92	■

\*With additional 4 tapped holes for front clamping according to DIN 2079.

\*根据DIN 2079 加置四个刀具夹持孔

## ACCESSORIES INCLUDED

Page: 293

出货包含配件

D1					
16	-	303 05 05 00 30	301 01 01 03 12	301 01 09 08 20	001 99 01 22 30
22	-	303 05 05 00 40	301 01 01 04 12	301 01 09 10 25	001 99 01 22 40
27	-	303 05 05 00 50	301 01 01 05 12	301 01 01 12 25	001 99 01 22 50
32	-	303 05 05 00 60	301 01 01 05 16	301 01 01 16 30	001 99 01 22 60
40	003 99 01 01 01	-	301 01 01 06 16	-	001 99 01 22 70
60	-	303 05 04 00 02	301 01 01 12 25	-	-

## OPTIONAL ACCESSORIES

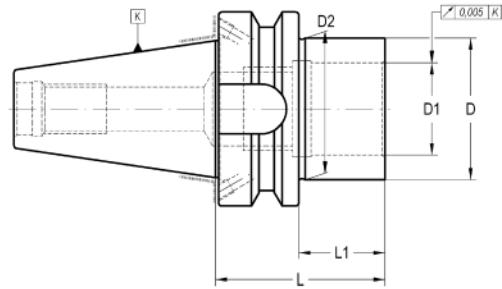
Page: 293

选购配件

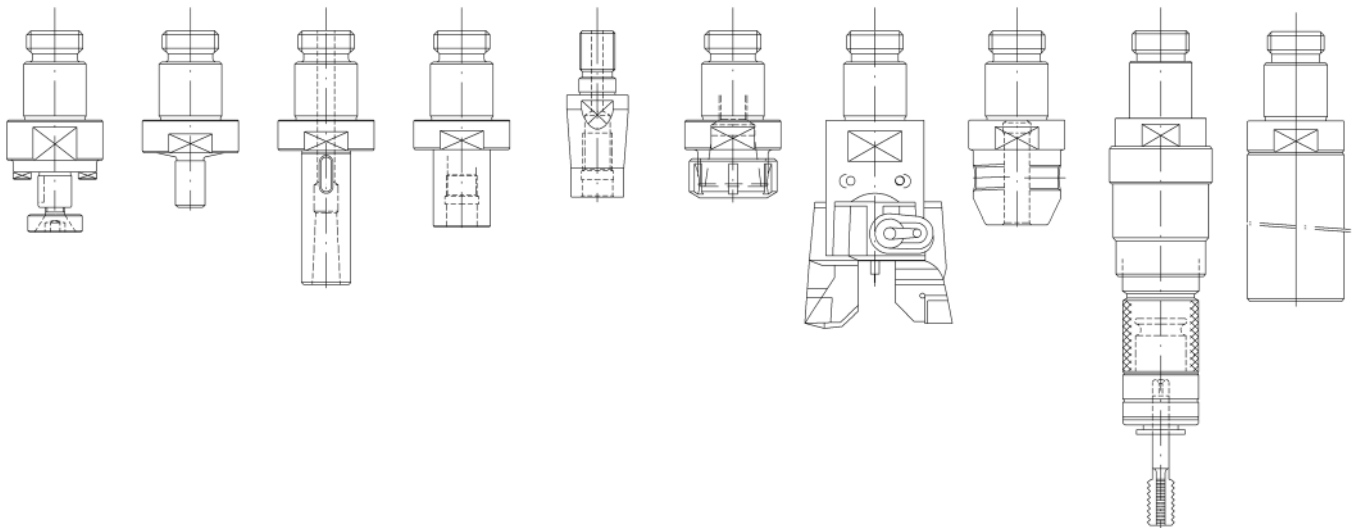
D1	
16	001 99 01 01 30
22	001 99 01 01 40
27	001 99 01 01 50
32	001 99 01 01 60
40	001 99 01 01 70
60	-

For tapered Morse taper tools DIN 228-B or Morse taper tools with thread DIN 228-A.  
适用于 DIN 228-B 型长度 或 DIN 228-A 型带螺纹刀具

DIN 6383



K	D1	D	L	L1	D2	COD. Form AD + B	Availability 库存状况
40	16	23	100	73	27	003 52 54 02 13	■
40	20	29	100	73	33	003 52 54 02 14	■
40	26	36	100	73	40	003 52 54 02 15	■
40	30	46	100	73	50	003 52 54 02 16	■
40	30	46	55	28	-	003 52 54 02 06	■
40	46	63	100	73	-	003 52 54 02 07	■
50	16	23	135	97	28,5	003 52 54 04 13	■
50	20	29	135	97	34,5	003 52 54 04 14	■
50	26	36	135	97	41,5	003 52 54 04 15	■
50	30	46	63	25	-	003 52 54 04 06	■
50	46	63	63	25	-	003 52 54 04 07	■
50	46	90	63	25	-	003 52 54 04 08	■



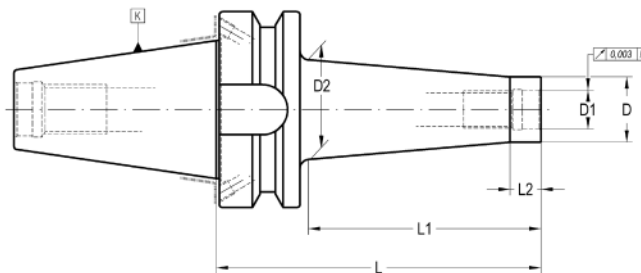
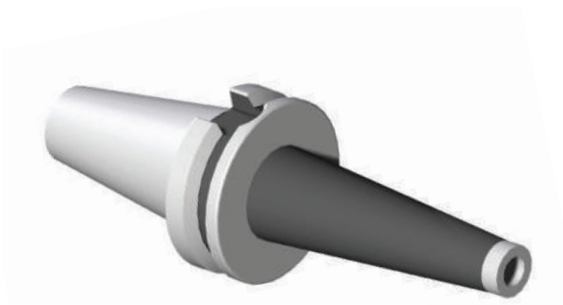
- 301 01 01 .. / 003 99 07.. Pull stud for tools with tightening thread according to DIN 228-A.

— 301 01 01 .. / 003 99 07 .. 使用DIN 228-A 型带螺纹工具时需要拉钉

RELATIONATED ELEMENTS Page: 183  
相关配件



003 02 11 ...



K	G	D	D1	D2	L	L1	L2	COD. Form AD + B	Availability 库存状况
40	M-8	12,8	8,5	16	55	25	10	003 52 57 12 02	■
40	M-8	12,8	8,5	24	105	75	10	003 52 57 32 02	■
40	M-10	17,8	10,5	20	55	25	10	003 52 57 12 03	■
40	M-10	17,8	10,5	28	105	75	10	003 52 57 32 03	■
40	M-12	20,8	12,5	24	55	25	10	003 52 57 12 04	■
40	M-12	20,8	12,5	32	105	75	10	003 52 57 32 04	■
40	M-12	20,8	12,5	34	150	120	10	003 52 57 52 04	■
40	M-16	28,8	17	30	55	25	10	003 52 57 12 05	■
40	M-16	28,8	17	38	105	75	10	003 52 57 32 05	■
40	M-16	28,8	17	38	150	120	10	003 52 57 52 05	■
50	M-10	17,8	10,5	24	96,5	52	10	003 52 57 24 03	■
50	M-10	17,8	10,5	32	146,5	102	10	003 52 57 44 03	■
50	M-12	20,8	12,5	24	96,5	52	10	003 52 57 24 04	■
50	M-12	20,8	12,5	34	146,5	102	10	003 52 57 44 04	■
50	M-16	28,8	17	32	96,5	52	10	003 52 57 24 05	■
50	M-16	28,8	17	42	146,5	102	10	003 52 57 44 05	■

- K40 Balanced according to ISO 1940-1 up to 15.000 r.p.m.  
 - We have latest methods for dynamic balancing up to 50.000 r.p.m.

— 根据ISO 1940-1 动平衡标准, K40 可达转速一万五千  
 — 我们的最新技术可将动平衡调整至高达转速五万

RELATIONATED ELEMENTS

相关配件



003 57 57 ...



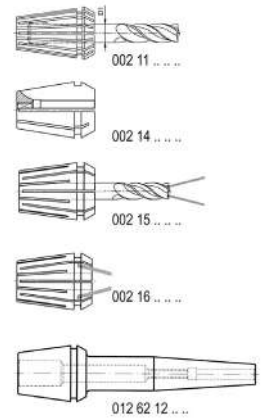
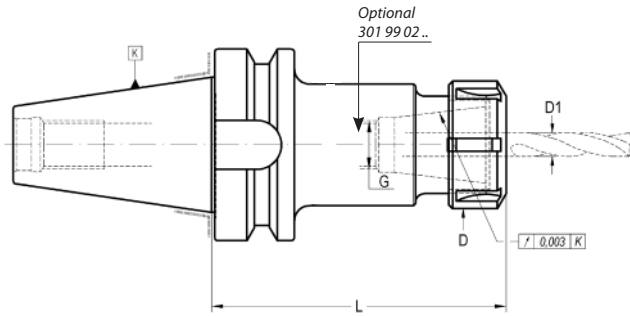
# COLLET CHUCKS ER TYPE (DIN 6499)

高速刀柄



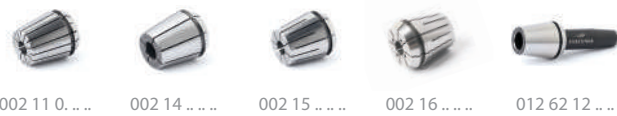
004 52 06 ...

For tools with cylindrical straight shank DIN 1835-A.  
适用于 DIN 1835-A 型滑面直柄刀具



K	Size	D1	L	D	G	COD. Form AD + B	Availability 库存状况
40	ER 16	0,5 - 10	70	28	M - 10	004 52 06 02 03	■
40	ER 16	0,5 - 10	100	28	M - 10	004 52 06 02 13	■
40	ER 16	0,5 - 10	160	28	M - 10	004 52 06 02 33	■
40	ER 25	1- 16	70	42	M-16	004 52 06 02 05	■
40	ER 25	1- 16	100	42	M-16	004 52 06 02 15	■
40	ER 25	1- 16	150	42	M-16	004 52 06 02 25	■
40	ER 32	2- 20	70	50	M-16	004 52 06 02 06	■
40	ER 32	2- 20	100	50	M-16	004 52 06 02 16	■
40	ER 32	2- 20	150	50	M-16	004 52 06 02 26	■
40	ER 40	3- 26	70	63	M-16	004 52 06 02 07	■
40	ER 40	3- 26	100	63	M-16	004 52 06 02 17	■
50	ER 16	0,5 - 10	100	28	M - 10	004 52 06 04 13	■
50	ER 16	0,5 - 10	160	28	M - 10	004 52 06 04 33	■
50	ER 32	2- 20	100	50	M-16	004 52 06 04 06	■
50	ER 32	2- 20	150	50	M-16	004 52 06 04 26	■
50	ER 32	2- 20	200	50	M-16	004 52 06 04 46	■
50	ER 40	3- 26	100	63	M-16	004 52 06 04 07	■
50	ER 40	3- 26	150	63	M-16	004 52 06 04 27	■
50	ER 40	3- 26	200	63	M-16	004 52 06 04 47	■

RELATED ELEMENTS Page: 254  
相关配件



CHUCK BODY BALANCED TO :		刀柄本体平衡等级:	
BT 30	BT 40	BT 50	
G 2,5 25.000 rpm	G 2,5 25.000 rpm	G 2,5 20.000 rpm	

ACCESSORIES INCLUDED  
出货包含配件

<p>Conventional 标准螺帽</p> <p>ER 16 004 99 01 08 03</p> <p>ER 25 004 99 01 03 05</p> <p>ER 32 004 99 01 03 06</p> <p>ER 40 004 99 01 03 07</p>	<p>Bearing shell nut 轴承滚珠螺帽</p> <p>ER 16 004 99 01 04 03</p> <p>ER 25 004 99 01 04 05</p> <p>ER 32 004 99 01 04 06</p> <p>ER 40 004 99 01 04 07</p>	<p>Notch free 无风阻螺帽</p> <p>ER 16 004 99 01 10 03</p> <p>ER 25 004 99 01 10 05</p> <p>ER 32 004 99 01 10 06</p> <p>ER 40 004 99 01 10 07</p>	<p>Mini 迷你型螺帽</p> <p>ER mini 8 004 99 01 06 01</p> <p>ER mini 11 004 99 01 06 02</p> <p>ER mini 16 004 99 01 06 03</p>
--	---	---	--

OPTIONAL ACCESSORIES  
选购配件

<p>ER mini 迷你型螺帽</p> <p>ER mini 8 004 99 04 05 01</p> <p>ER mini 11 004 99 04 05 02</p> <p>ER mini 16 004 99 04 05 03</p>	<p>ER 16 004 99 04 06 25</p> <p>ER 25 004 99 04 03 05</p> <p>ER 32 004 99 04 03 06</p>	<p>004 99 04 07 30</p> <p>004 99 04 07 40</p> <p>004 99 04 07 50</p>
---	--	--

HSK  
DIN 69871  
BT  
BT\_DUAL CONTACT

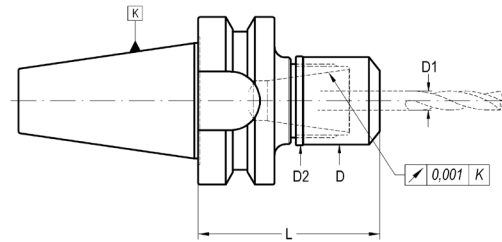
## ZENTRO TYPE CHUCKS

### ZER 型筒夹刀柄

004 52 16 ...



For tools with cylindrical straight shank DIN 1835-A.  
适用于DIN 1835-A 型滑面直柄刀具



K	Size	D1	L	D	D2	COD.	Availability 库存状况
30	ZR16 (Mini)	0,5 - 10	55	24	24,4	004 52 16 01 03	■
30	ZR16 (Mini)	0,5 - 10	100	24	24,4	004 52 16 01 13	■
30	ZR 25	1 - 16	55	40	40,4	004 52 16 01 05	■
30	ZR 25	1 - 16	100	40	40,4	004 52 16 01 15	■
30	ZR 32	2 - 20	60	50	50,4	004 52 16 01 06	■
30	ZR 32	2 - 20	100	50	50,4	004 52 16 01 16	■

#### RELATIONATED ELEMENTS Page: 253

相关配件



002 11 0..... 002 14..... 002 15..... 002 16..... 012 62 12.....

#### ACCESSORIES INCLUDED

出货包含配件

Notch free nut  
无风阻螺帽



ZER	
16 Mini	004 99 01 16 13
25	004 99 01 16 05
32	004 99 01 16 06

#### OPTIONAL ACCESSORIES

选购配件



004 99 04 07 24  
004 99 04 07 40  
004 99 04 07 50



301 04 14.....



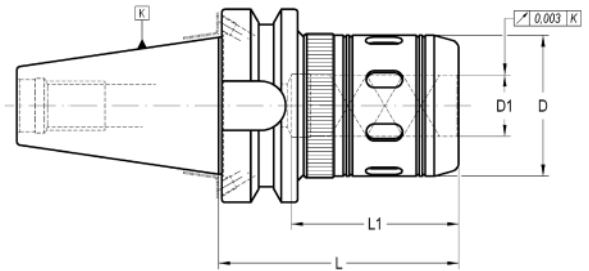
# GREAT POWER COLLET CHUCKS -SLIM LINE-

强力夹持-超薄型



004 52 15 ...

For tools with cylindrical straight shanks.  
适用于直柄刀具



K	D1	L	D	L1	COD. Form AD + B	Availability 库存状况	
40	20	80	46	60	004 52 15 02 04	■	004 99 04 02 06
40	20	105	46	60	004 52 15 02 14	■	004 99 04 02 06
40	32	85	62	75	004 52 15 02 06	■	004 99 04 02 06
40	32	105	62	80	004 52 15 02 16	■	004 99 04 02 06
50	20	100	46	60	004 52 15 04 04	■	004 99 04 02 06
50	32	100	62	80	004 52 15 04 06	■	004 99 04 02 06
50	32	135	62	80	004 52 15 04 26	■	004 99 04 02 06
50	40	115	85	90	004 52 15 04 07	■	004 99 04 02 06
50	50	115	99	90	004 52 15 04 09	■	004 99 04 02 06

- For an optimum performance of the chuck it is highly recommended to use h6 cylindrical tools.  
- For tools with nominal  $\varnothing$  equal to "D1" the collet is no needed.

— 为提供刀柄的最高效能，我们建议您搭配h6精度的直柄刀具  
— 刀具直径如与D1值相等，则不需要使用筒夹

CHUCK BODY BALANCED TO:  
刀柄本体平衡等级:

BT 40	BT 50
G 2,5 25.000 rpm	G 2,5 20.000 rpm

Page: 239/261

Page: 317

Use recommendations  
使用相关注意事项

RELATIONATED ELEMENTS  
相关配件



ACCESSORIES INCLUDED  
出货包含配件

Conventional 常规螺母

Notch free nut 滑面螺母



D1  
20 351 04 00 14 07  
32 351 04 00 14 07

D1  
20 351 04 00 34 07  
32 351 04 00 34 07

OPTIONAL ACCESSORIES  
选购配件

Wrench for conventional nut 常规螺母用扳手

Wrench for notch free nut 滑面螺母用扳手



D1  
20 004 99 04 09 09  
32 004 99 04 09 11

004 99 04 07 46  
004 99 04 07 62

# HIGH POWER COLLET CHUCKS - HPTC -

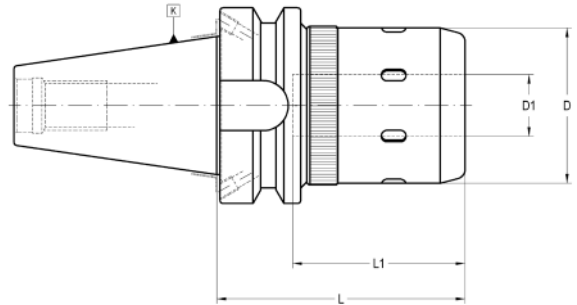
强力夹持-加强型



004 52 55 ...

For tools with cylindrical straight shank.  
适用于直柄刀具

**NEW!**



K	D1 max.	L	D	L1	COD. Form AD + B	Availability 库存状况	
40	16	75	40	50	004 52 55 02 03	■	004 99 04 02 06
40	20	80	50	55	004 52 55 02 04	■	004 99 04 02 06
40	25	90	62	62	004 52 55 02 05	■	004 99 04 02 06
50	20	100	50	60	004 52 55 04 04	■	004 99 04 02 06
50	20	135	50	60	004 52 55 04 14	■	004 99 04 02 06
50	40	115	85	90	004 52 55 04 07	■	004 99 04 02 06
50	50	115	99	90	004 52 55 04 09	■	004 99 04 02 06

CHUCK BODY BALANCED TO / CUERPO EQUILIBRADO A / AUFNAHMEKÖRPER GEWUCHTET

BT 30	BT 40	BT 50
G 2,5 30.000 rpm	G 2,5 25.000 rpm	G 2,5 25.000 rpm

Page: 317

Use recommendations  
使用相关注意事项

RELATIONATED ELEMENTS Page: 239/261  
相关配件



OPTIONAL ACCESSORIES  
选购配件

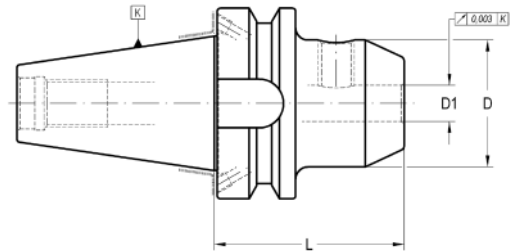


D1	
16	004 99 04 09 08
20	004 99 04 09 09
25	004 99 04 09 11
32	004 99 04 09 11
40	004 99 04 09 13
50	004 99 04 09 14

- For an optimum performance of the chuck it is highly recommended to use h6 cylindrical tools.
- For tools with nominal Ø equal to "D1" the collet is not needed.
- Other sizes please contact.

- 为使筒夹达到最高效能，我们强烈建议您搭配h6精度的直柄刀具
- 如刀具直径与 D1 相同则不需要使用筒夹
- 如需其他尺寸请洽询

For end mills with shank DIN 1835-B - DIN 6335 HB.  
适用于DIN 1835-B DIN 6335 HB 型直柄立铣刀

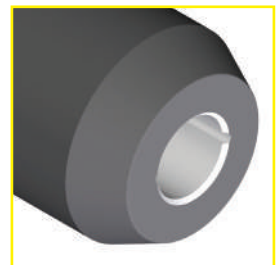
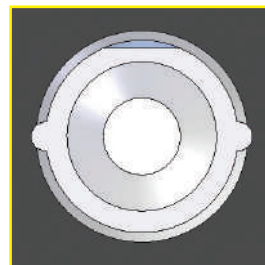


K	D1	L	D	COD. Form AD + B	Availability Disponibilidad Verfügbarkeit	
40	6	50	25	012 52 01 12 06	■	301 01 05 06 10
40	8	50	28	012 52 01 12 08	■	301 01 05 08 10
40	10	63	35	012 52 01 12 10	■	301 01 05 10 12
40	12	63	42	012 52 01 12 12	■	301 01 05 12 16
40	14	63	44	012 52 01 12 14	■	301 01 05 12 16
40	16	63	48	012 52 01 12 16	■	301 01 05 14 16
40	18	63	50	012 52 01 12 18	■	301 01 05 14 16
40	20	63	52	012 52 01 12 20	■	301 01 05 16 16
40	25	95	65	012 52 01 12 25	■	301 01 05 18 20
40	32	100	72	012 52 01 12 32	■	301 01 05 20 20
40	40	100	80	012 52 01 12 40	■	301 01 05 20 20
50	6	63	25	012 52 01 14 06	■	301 01 05 06 10
50	6	120	25	012 52 01 24 06	■	301 01 05 06 10
50	8	63	28	012 52 01 14 08	■	301 01 05 08 10
50	8	120	28	012 52 01 24 08	■	301 01 05 08 10
50	10	65	35	012 52 01 14 10	■	301 01 05 10 12
50	10	120	35	012 52 01 24 10	■	301 01 05 10 12
50	12	80	42	012 52 01 14 12	■	301 01 05 12 16
50	12	120	42	012 52 01 24 12	■	301 01 05 12 16
50	14	80	44	012 52 01 14 14	■	301 01 05 12 16
50	14	120	44	012 52 01 24 14	■	301 01 05 12 16
50	16	80	48	012 52 01 14 16	■	301 01 05 14 16
50	16	120	48	012 52 01 24 16	■	301 01 05 14 16
50	18	80	50	012 52 01 14 18	■	301 01 05 14 16
50	18	120	50	012 52 01 24 18	■	301 01 05 14 16
50	20	80	52	012 52 01 14 20	■	301 01 05 16 16
50	20	120	52	012 52 01 24 20	■	301 01 05 16 16
50	25	100	65	012 52 01 14 25	■	301 01 05 18 20
50	32	105	72	012 52 01 14 32	■	301 01 05 20 20
50	40	105	80	012 52 01 14 40	■	301 01 05 20 20
50	50	125	98	012 52 01 14 50	■	301 01 05 24 25

- D1 ≥ 25 mm: two clamping holes.  
- Balanced according to ISO 1940-1 up to 10.000 r.p.m.  
- We have latest methods for dynamic balancing up to 50.000 r.p.m.

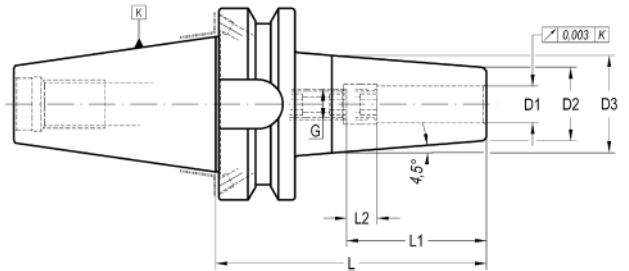
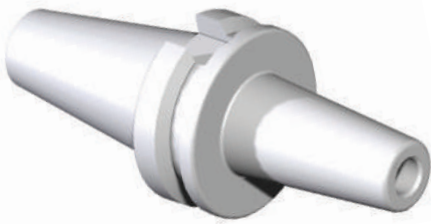
— D1 ≥ 25mm: 有两个刀具夹持孔  
— 根据ISO 1940-1 动平衡标准可达转速一万  
— 我们的最新技术可将动平衡调整至高达转速五万


OPTIONAL: On request, supplied with cooling slots.  
选购: 如有需要请洽询, 可提供冷却槽



Similar to DIN 69882-8

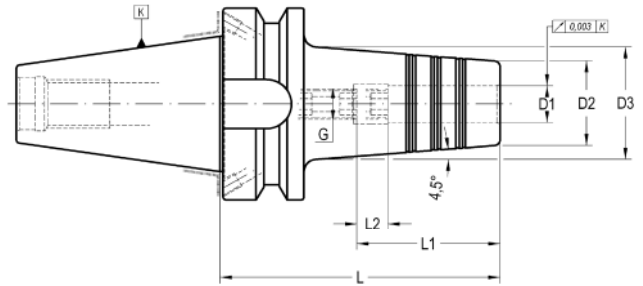
与DIN 69882-B 型相似




K	D1	L	D2	D3	L1	L2	G	COD. Form AD + B	Availability 库存状况	
40	3	90	12	18	15	-	-	012 52 12 12 03	■	-
40	4	90	14	20	15	-	-	012 52 12 12 04	■	-
40	5	90	16	22	20	-	-	012 52 12 12 05	■	-
40	6	90	21	27	36	10	M-5	012 52 12 12 06	■	301 02 33 05 02
40	6	120	21	27	36	10	M-5	012 52 12 22 06	■	301 02 33 05 02
40	8	90	21	27	36	10	M-6	012 52 12 12 08	■	301 02 33 06 02
40	8	120	21	27	36	10	M-6	012 52 12 22 08	■	301 02 33 06 02
40	10	90	24	32	41	10	M-8	012 52 12 12 10	■	301 02 33 08 02
40	10	120	24	32	41	10	M-8	012 52 12 22 10	■	301 02 33 08 02
40	12	90	24	32	46	10	M-10	012 52 12 12 12	■	301 02 33 10 02
40	12	120	24	32	46	10	M-10	012 52 12 22 12	■	301 02 33 10 02
40	14	90	27	34	46	10	M-10	012 52 12 12 14	■	301 02 33 10 02
40	14	120	27	34	46	10	M-10	012 52 12 22 14	■	301 02 33 10 02
40	16	90	27	34	49	10	M-12	012 52 12 12 16	■	301 02 33 12 02
40	16	120	27	34	49	10	M-12	012 52 12 22 16	■	301 02 33 12 02
40	18	90	33	42	49	10	M-12	012 52 12 12 18	■	301 02 33 12 02
40	18	120	33	42	49	10	M-12	012 52 12 22 18	■	301 02 33 12 02
40	20	90	33	42	51	10	M-16	012 52 12 12 20	■	301 02 33 16 02
40	20	120	33	42	51	10	M-16	012 52 12 22 20	■	301 02 33 16 02
40	25	110	44	53	57	10	M-16	012 52 12 12 25	■	301 02 33 16 02
40	32	110	44	53	61	10	M-16	012 52 12 12 32	■	301 02 33 16 02
50	6	100	21	27	36	10	M-5	012 52 12 14 06	■	301 02 33 05 02
50	6	160	21	27	36	10	M-5	012 52 12 34 06	■	301 02 33 05 02
50	8	100	21	27	36	10	M-6	012 52 12 14 08	■	301 02 33 06 02
50	8	160	21	27	36	10	M-6	012 52 12 34 08	■	301 02 33 06 02
50	10	100	24	32	41	10	M-8	012 52 12 14 10	■	301 02 33 08 02
50	10	160	24	32	41	10	M-8	012 52 12 34 10	■	301 02 33 08 02
50	12	100	24	32	46	10	M-10	012 52 12 14 12	■	301 02 33 10 02
50	12	160	24	32	46	10	M-10	012 52 12 34 12	■	301 02 33 10 02
50	14	100	27	34	46	10	M-10	012 52 12 14 14	■	301 02 33 10 02
50	14	160	27	34	46	10	M-10	012 52 12 34 14	■	301 02 33 10 02
50	16	100	27	34	49	10	M-12	012 52 12 14 16	■	301 02 33 12 02
50	16	160	27	34	49	10	M-12	012 52 12 34 16	■	301 02 33 12 02
50	18	100	33	42	49	10	M-12	012 52 12 14 18	■	301 02 33 12 02
50	18	160	33	42	49	10	M-12	012 52 12 34 18	■	301 02 33 12 02
50	20	100	33	42	51	10	M-16	012 52 12 14 20	■	301 02 33 16 02
50	20	160	33	42	51	10	M-16	012 52 12 34 20	■	301 02 33 16 02
50	25	120	44	53	57	10	M-16	012 52 12 14 25	■	301 02 33 16 02
50	25	160	44	53	57	10	M-16	012 52 12 34 25	■	301 02 33 16 02
50	32	120	44	53	61	10	M-16	012 52 12 14 32	■	301 02 33 16 02
50	32	160	44	53	61	10	M-16	012 52 12 34 32	■	301 02 33 16 02

Similar to DIN 69882-8

与DIN 69882-B 型相似



K	D1	D2	D3	L	L1	L2	G	COD. Form AD + B	Availability 库存状况	
40	12	27	37	90	46	10	M-10	012 52 42 12 12	■	301 02 33 10 02
40	16	33	43	90	49	10	M-12	012 52 42 12 16	■	301 02 33 12 02
40	20	44	53	90	51	10	M-16	012 52 42 12 20	■	301 02 33 16 02
40	25	48	53	110	57	10	M-18	012 52 42 12 25	■	301 02 33 16 02
50	12	27	36	100	46	10	M-10	012 52 42 14 12	■	301 02 33 10 02
50	16	33	42	100	49	10	M-12	012 52 42 14 16	■	301 02 33 12 02
50	20	44	54	100	51	10	M-16	012 52 42 14 20	■	301 02 33 16 02
50	25	48	56	120	57	10	M-18	012 52 42 14 25	■	301 02 33 16 02

Characteristics:

- Heat resistant hot-working steel.
- Tempered: 54 -2 HRC.
- Taper manufactured according DIN-69871.
- Balanced according to ISO-1940-1 to G2,5 at 25.000 r.p.m.

Application:

- Machining where it requires a exceptional tool hold and high accuracy.
- Vibrations reductions due to hold section increase.
- For a correct function it recommended:

Shank tolerance: h6.

D1 = 3, 4 & 5: Carbide

D1 ≥ 6 mm: Carbide or HSS

Delivery:

- With built-in bored through stop screw.

特色:

- 使用耐热钢打造
- 回火：54-2 HRC
- 锥头为DIN-69871 型
- 根据ISO 1940-1 动平衡标准转速二万五千时为 G 2.5

应用:

- 装设使用的跳动精度极高
- 特殊设计的夹持部分增强防震效果
- 使其正常运作应注意:

刀柄等级: h6

D1 = 3, 4 & 5 mm: 碳化钢

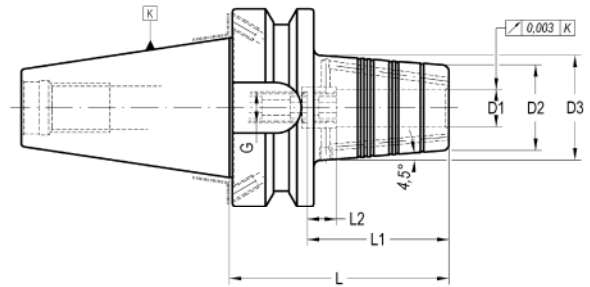
D1 ≥ 6 mm: 碳化钢 或 高速钢


配送:

- 内置冷却液槽锁紧螺丝

DOUBLE CONTACT. Similar to DIN 69882-8

双头夹持刀柄，与DIN 69882-B型相似



K	D1	D2	D3	L	L1	L2	G	COD. Form AD + B	Availability 库存状况	
40	12	27	34	70	46	10	M-10	012 52 62 02 12	■	301 02 33 10 04
40	16	33	41	75	49	10	M-12	012 52 62 02 16	■	301 02 33 12 04
40	20	44	52	75	51	10	M-16	012 52 62 02 20	■	301 02 33 16 04
40	25	48	53	85	57	10	M-16	012 52 62 02 25	■	301 02 33 16 04
50	12	27	33	80	46	10	M-10	012 52 62 04 12	■	301 02 33 10 04
50	16	33	40	85	49	10	M-12	012 52 62 04 16	■	301 02 33 12 04
50	20	44	51	85	51	10	M-16	012 52 62 04 20	■	301 02 33 16 04
50	25	48	56	95	57	10	M-16	012 52 62 04 25	■	301 02 33 16 04

Characteristics:

- Heat resistant hot-working steel.
- Tempered: 54-2 HRC.
- Taper manufactured according DIN-69871.
- Balanced according to ISO-1940-1 to G2,5 at 25.000 r.p.m.

Application:

- Machining where it requires an exceptional tool hold and high accuracy.
- Vibrations reductions due to hold section increase.
- For a correct function it is recommended:

Shank tolerance: h6.

D1 = 3, 4 & 5: Carbide

D1 ≥ 6 mm: Carbide or HSS

Delivery:

- With built-in bored through stop screw.

特色:

- 使用耐热钢打造
- 回火：54-2 HRC
- 锥头为DIN-69871型
- 根据ISO 1940-1 动平衡标准转速二万五千时为 G 2.5

应用:

- 装设使用的跳动精度极高
- 特殊设计的夹持部分增强防震效果
- 使其正常运作应注意:

刀柄等级: h6

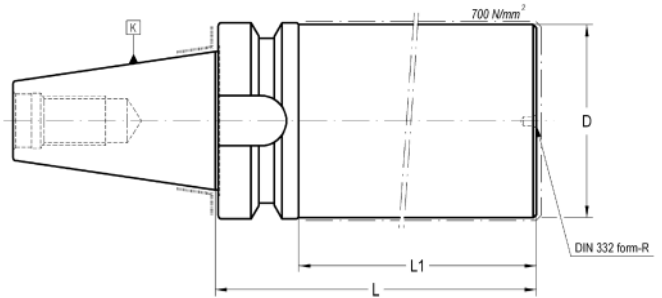
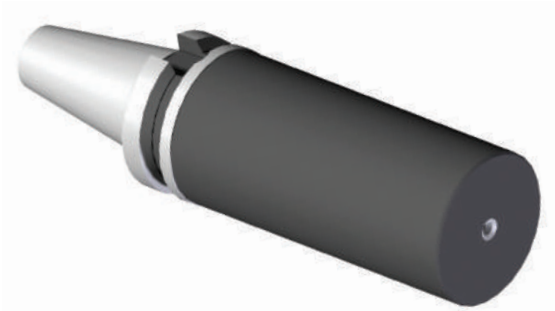
D1 = 3, 4 & 5 mm: 碳化钢

D1 ≥ 6 mm: 碳化钢 或 高速钢

配送:

- 内置冷却液槽锁紧螺丝





K	D	L	COD. Form A	Availability 库存状况
40	63	160	020 52 02 02 73	■
40	63	250	020 52 02 02 75	■
50	90	160	020 52 02 04 93	■
50	90	250	020 52 02 04 95	■

- The area of diameter D and length L1 has approximately 700N/mm<sup>2</sup>.  
 - Rest is hardened to 57 ÷ 60 HRC.  
 - Other dimensions on request.

— 直径 D 与长度 L1 部分的抗压强度约为 700N/mm<sup>2</sup>  
 — 其他部分经过强化为洛氏硬度 57 ÷ 60 HRC  
 — 如需其他尺寸请洽询

