

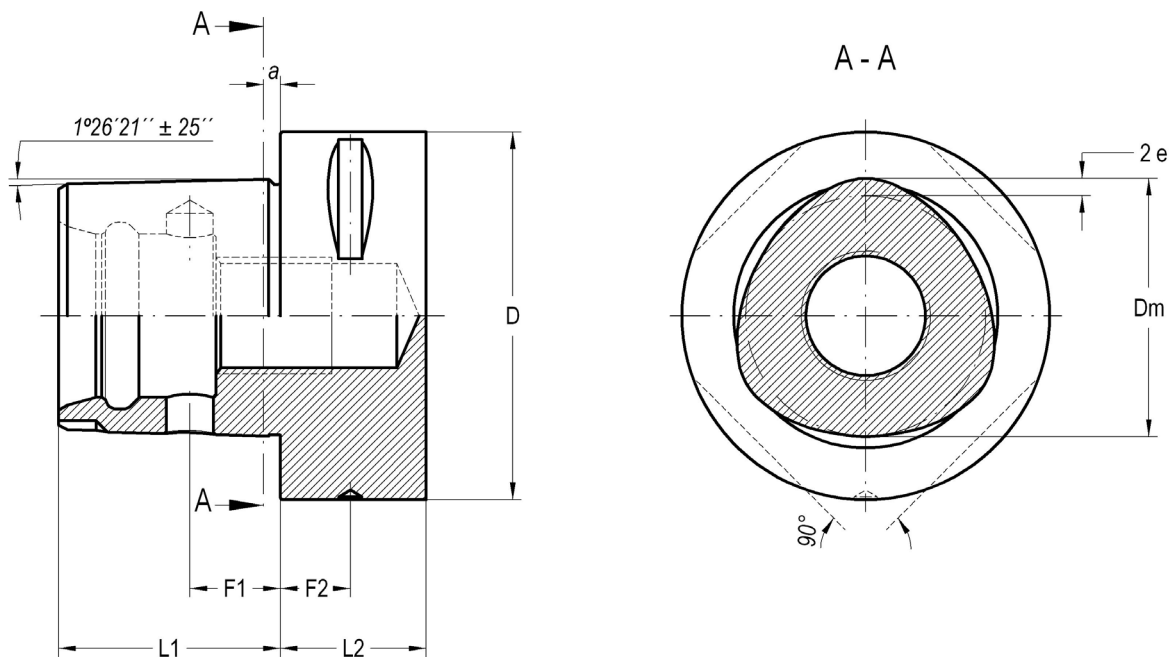


NEW!

TOOLHOLDER FOR POLYGONAL TAPER SHANKS
多边形锥头刀具用刀柄



ISO 26623 - 1



K	D	Dm	L1 ± 0,1	L2 min.	F1 ± 0,2	F2 ± 0,15	a	e
LC3	32	22	19	15	8	6	2,5	0,7
LC4	40	28	24	20	11,5	8	2,5	0,9
LC5	50	35	30	20	14	10	3	1,12
LC6	63	44	38	22	15,5	12	3	1,4
LC8	80	55	48	30	25	12	3	2
LC8-X	100	55	48	32	25	16	3	2

COLLET CHUCKS ER TYPE (DIN 6499)

Material

Case-hardening alloy steel.
Case-hardened and tempered.
Minium strength in core 880 N/mm²
Surface hardness HRC 57 ÷ 60

Taper tolerance

Grade AT3.

材质

表面特殊处理过的合金钢
经过强化与回火
轴心最低抗压强度为 880 N/mm²
表面强度为洛氏硬度 HRC 57 ÷ 60

锥头标准

AT3 等级

	SHELL END MILL ARBORS 面铣刀柄	149		HIGH POWER TORQUE CHUCK - HPTC - 强力夹持-加强型	151
	COLLET CHUCKS ER TYPE (DIN 6499) 高速刀柄	150		INTERNAL TURNING 车铣复合中心系统	152
	BASIC ADAPTER FOR MODULAR TOOLING 模块化刀柄	150		TOOLHOLDER BLANKS 毛坯柄	152

SHELL END MILL ARBORS WITH INTERNAL COOLING

面铣刀柄

001 10 35 ...



HSK

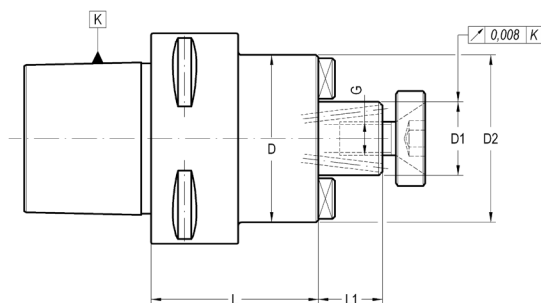
DIN
69871

BT

BT_DUAL
CONTACT

POLYGONAL
TAPER_LC6

For shell end mills with driving slot DIN 138.
适用于 DIN 138 型驱动槽壳铣刀



K	D1 h6	L	L1	D	COD.	Availability 库存状况
LC6	16	50	17	38	001 10 35 04 30	■
LC6	22	50	19	48	001 10 35 04 40	■
LC6	27	60	21	60	001 10 35 04 50	■
LC6	32	60	24	70	001 10 35 04 60	■

ACCESSORIES INCLUDED

出货包含配件

D ₁				
16	-	303 05 05 00 30	301 01 01 03 12	301 01 09 08 20
22	-	303 05 05 00 40	301 01 01 04 12	301 01 09 10 25
27	-	303 05 05 00 50	301 01 01 05 12	301 01 01 12 25
32	-	303 05 05 00 60	301 01 01 05 16	301 01 01 16 30

OPTIONAL ACCESSORIES

选购配件

D ₁		
16	001 99 01 01 30	001 99 04 01 30
22	001 99 01 01 40	001 99 04 01 40
27	001 99 01 01 50	001 99 04 01 50
32	001 99 01 01 60	001 99 04 01 60

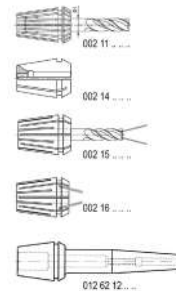
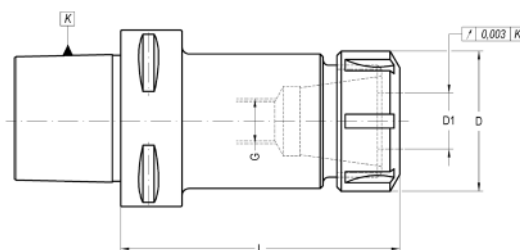
COLLET CHUCKS ER TYPE (DIN 6499)

高速刀柄

004 10 06 ...



For tools with cylindrical straight shank DIN 1835-A.
适用于 DIN 1835-A 型滑面直柄刀具



K	Size	D1	L	D	G	COD.	Availability 库存状况
LC6	ER 32	2 - 20	100	50	M - 16	004 10 06 04 06	■

ACCESSORIES INCLUDED

出货包含配件

Conventional
标准螺帽



ER 32 004 99 01 03 06

Bearing shell nut
轴承滚珠螺帽



ER 32 004 99 01 04 06

Notch free
无风阻螺帽



ER 32 004 99 01 10 06

OPTIONAL ACCESSORIES

选购配件



ER 32 004 99 04 03 06



004 99 04 07 50

RELATIONATED ELEMENTS Page: 254

相关配件

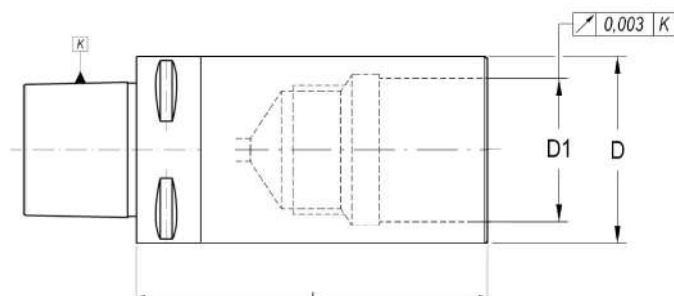


002 11 0 ...

BASIC ADAPTERS FOR MODULAR TOOLING

模块化刀柄

003 10 54 ...



K	D1	L	D	COD.	Availability 库存状况
LC6	46	100	63	003 10 54 04 07	■

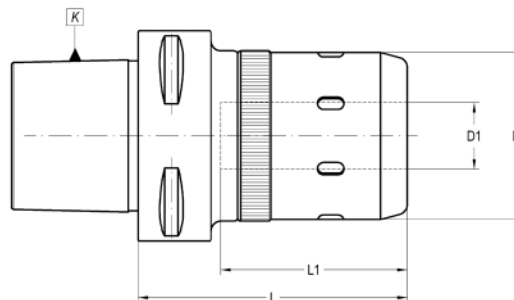
HIGH POWER COLLET CHUCKS - HPTC -

强力夹持-加强型

004 10 55 ...



For tools with cylindrical straight shank.
适用于直柄刀具



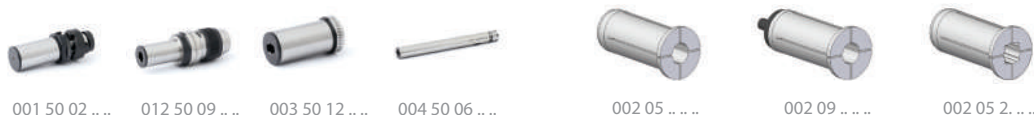
K	D1 max.	L	D	L1	COD.	Availability 库存状况	
LC6	20	85	50	60	004 10 55 04 04	■	004 99 04 02 06

HSK
DIN 69871
BT
BT_DUAL CONTACT
POLYGONAL TAPER_LC6

CHUCK BODY BALANCED TO 刀柄本体平衡等级:
LC 6
G 2,5 25.000 rpm

Page: 317
Use recommendations
使用相关注意事项

RELATIONATED ELEMENTS Page: 239/261 相关配件



OPTIONAL ACCESSORIES 选购配件



D1	
16	004 99 04 09 08
20	004 99 04 09 09
25	004 99 04 09 11
32	004 99 04 09 11
40	004 99 04 09 13
50	004 99 04 09 14

- For an optimum performance of the chuck it is highly recommended to use h6 cylindrical tools.
- For tools with nominal Ø equal to "D1" the collet is not needed.
- Other sizes please contact.

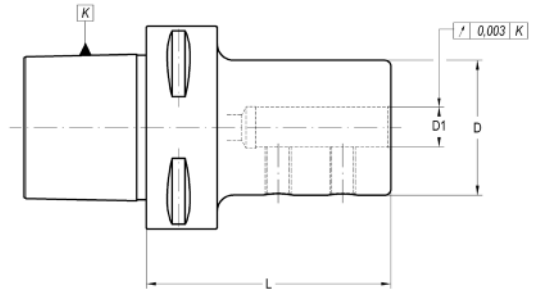
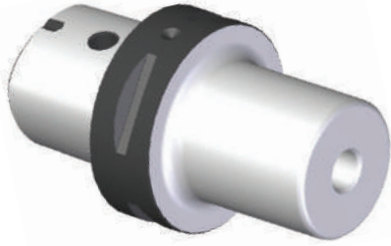
- 为使筒夹达到最高效能，我们强烈建议您搭配h6精度的直柄刀具
- 如刀具直径与 D1 相同则不需要使用筒夹
- 如需其他尺寸请咨询

INTERNAL TURNING

车铣复合中心系统



005 10 55 ...



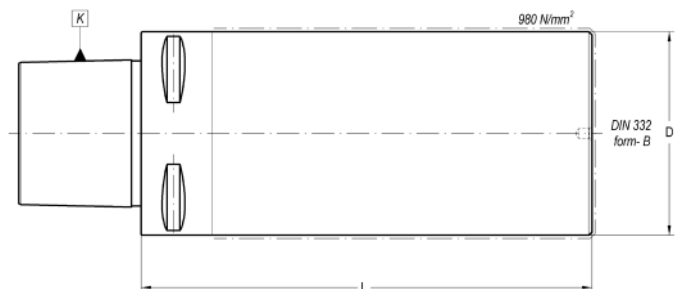
K	D1	L	D	COD.	Availability 库存状况	
LC6	8	65	28	005 10 55 04 08	■	301 01 03 08 10
LC6	10	70	35	005 10 55 04 10	■	301 01 03 08 12
LC6	12	70	42	005 10 55 04 12	■	301 01 03 08 12
LC6	16	70	48	005 10 55 04 16	□	301 01 03 10 16
LC6	20	70	48	005 10 55 04 20	□	301 01 03 10 12
LC6	25	75	48	005 10 55 04 25	□	301 01 03 12 12
LC6	32	75	63	005 10 55 04 32	□	301 01 03 12 14
LC6	40	85	65	005 10 55 04 40	□	301 01 03 12 12

TOOLHOLDER BLANKS

毛坯柄



020 10 02 ...



K	D	L	COD. Form A	Availability 库存状况
LC6	63	180	020 10 02 04 44	■
LC6	110	120	020 10 02 04 42	■
LC6	120	180	020 10 02 04 45	■